



SØNDERGAARD

## RÅDHUSPLADSEN LAMP

Declan Curran Ericksen  
MAA Strategic Design and Entrepreneurship, IBD  
Royal Danish Academy of Architecture, Design, and Conservation





*Helmerhus, Rådhuspladsen 2, 1550, København, Denmark*

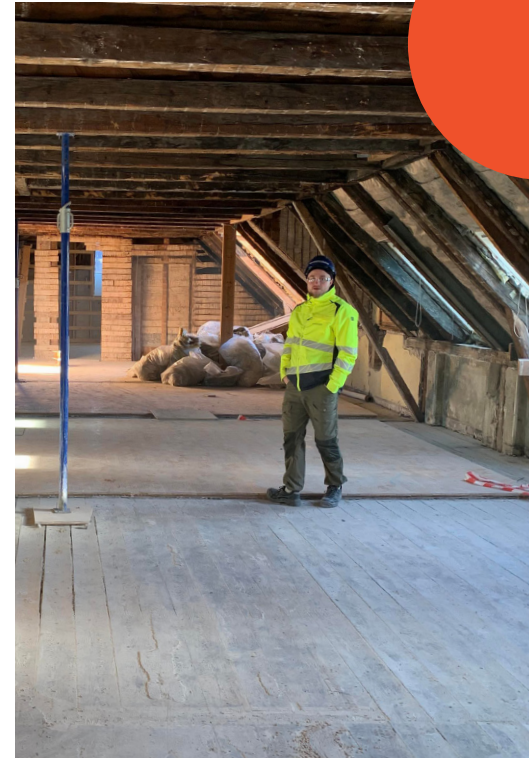
## ABOUT

Helmerhus was originally constructed in 1892 and stands directly across from Copenhagen City Hall, Rådhuspladsen. The building has had a variety of programs over the last 130 years but is currently undergoing restoration and transformation of interior spaces to accommodate modern offices. Henning Larsen Architects will design the project and will also add to the upper level of the building in order to facilitate a new roof garden space. Great care is going into the preservation and upcycling of materials on this project.

A special thanks to Søndergaard A/S team, Frederik Gade Lind and Anders Nielsen in helping source and salvage material on this project.



## SOURCING



The lamp is composed of one salvaged metal pipe and one H beam fragment. Both were sourced from the fifth floor of Helmerhus. The beam is likely from a structural retrofitting during 1925, the pipe is either from original or from the 1925 work.

## MATERIALS



### **SNOWPEAK HOME AND CAMP LANTERN, ES-080.**

ABOUT: Rechargeable Camping Lantern.

LOCATION: ---

AGE: +/- 1 year, 2022



### **STEEL PIPE, RHP-002-23**

ABOUT: Salvaged Steel Pipe.

LOCATION: *Helmerhus*, Radhuspladsen 2, 1550 København, Denmark

AGE: +/-98 years, 1925

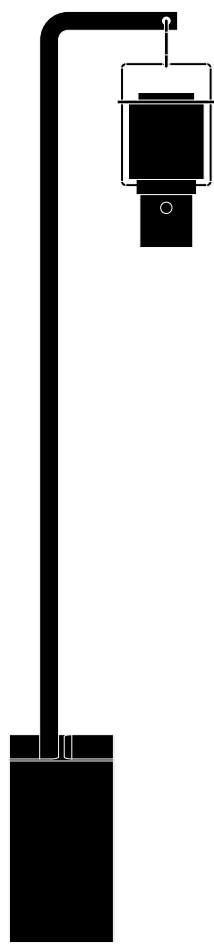
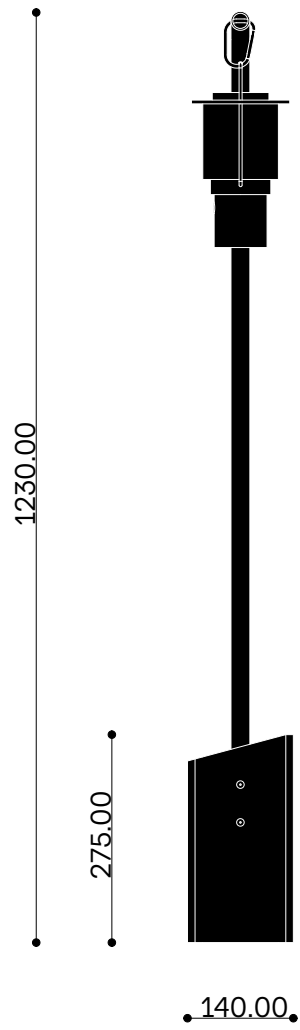


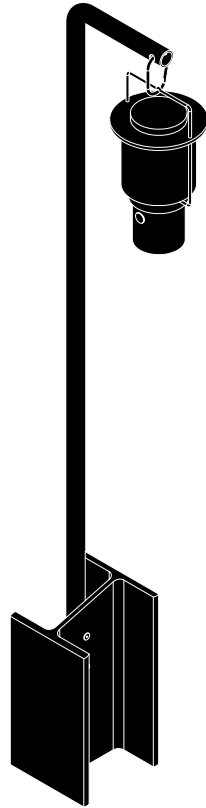
### **STEEL H BEAM, RHP-004-23**

ABOUT: Salvaged Steel H Beam.

LOCATION: *Helmerhus*, Radhuspladsen 2, 1550 København, Denmark

AGE: +/-98 years, 1925





**DECLAN CURRAN ERICKSEN**

@STUDIO.DECLANERICKSEN

DECLAN.C.ERICKSEN@GMAIL.COM

+ 45 55 22 96 72