

SITUATION 01: FELLS
 THE OPEN LANDSCAPE GRADUALLY TURNS INTO FOREST WITH BIRCH AND CONIFEROUS TREES. THESE ARE SOME OF THE OLDEST TREES IN SWEDEN AND OUGHT TO BE PRESERVED. THE FELLS SHOULD REMAIN A NATURAL RESERVE, ALTHOUGH THE WARMER CLIMATE MOVES THE TREE BORDER AND CHANGES THE VEGETATION.

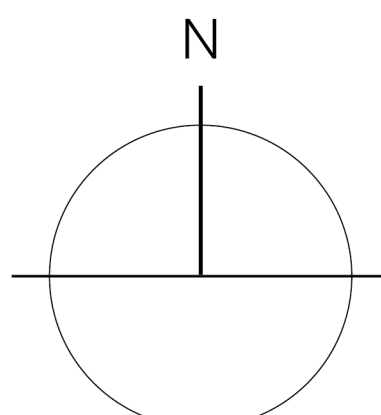
SITUATION 02: RIVERS
 THE RIVERS HAVE BEEN USED FOR LOG-DRIVING TOWARD THE COAST WHERE THE INDUSTRIES ARE PLACED. THE WATER IS REGULATED BY HYDROPOWER PLANTS, WHICH DETERMINE THE CONDITIONS FOR VEGETATION. THE FORESTS ALONG THE RIVERS SHOULD BE PROTECTED, TO SUSTAIN CRUCIAL ECOSYSTEMS.

SITUATION 03: TAIGA
 A LANDSCAPE WHICH INCLUDES DENSE CONIFEROUS FORESTS, RIVERS AND OPEN LAND. DECIDUOUS TREES ARE INTRODUCED FOR BIODIVERSITY. REGIONS SPECIALIZE IN DIFFERENT TREE TYPES, IN TERMS OF PLANTATION AS WELL AS MATERIAL PROCESSING. IT CONNECTS THE FORESTS WITH THE INDUSTRIES.

SITUATION 04: RAILWAY
 THE SAWMILLS ARE LOCATED ALONG THE RAILWAY. THESE CORRIDORS ARE PRODUCTIVE AREAS WITH MAINLY CONIFEROUS TREES. THE POCKETS IN BETWEEN SERVE OTHER PURPOSES, SUCH AS RECREATIONAL AND CONSERVATIONAL. THESE AREAS ARE TRANSFORMED BY INTRODUCING MORE DECIDUOUS TREES.

SWEDEN 2021
 VISION FOR PRODUCTION

- NORTH: THE FELLS
- NORTH: CONIFEROUS FOREST
- MIDDLE: THE TAIGA
- SOUTH: CONIFEROUS FOREST
- SOUTH: MIXED FOREST
- SOUTH: DECIDUOUS FOREST
- TREES
- OLD TREES
- UNSPECIFIED FOREST
- SPECIALIZED FOREST
- PROTECTED FOREST
- WITCHCRAFT FOREST
- PRODUCTIVE FOREST
- WATER
- SETTLEMENT
- NATURAL RESERVE
- RAILWAY
- PREVIOUS BORDER
- SAWMILL

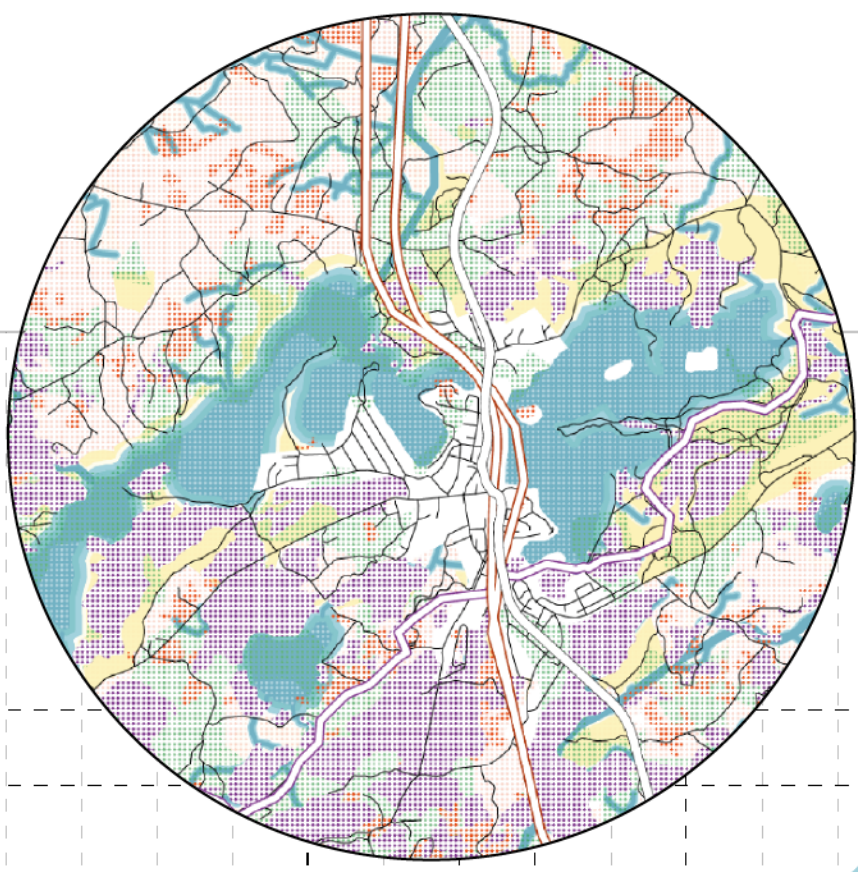


SCALE 1 : 2 500 000



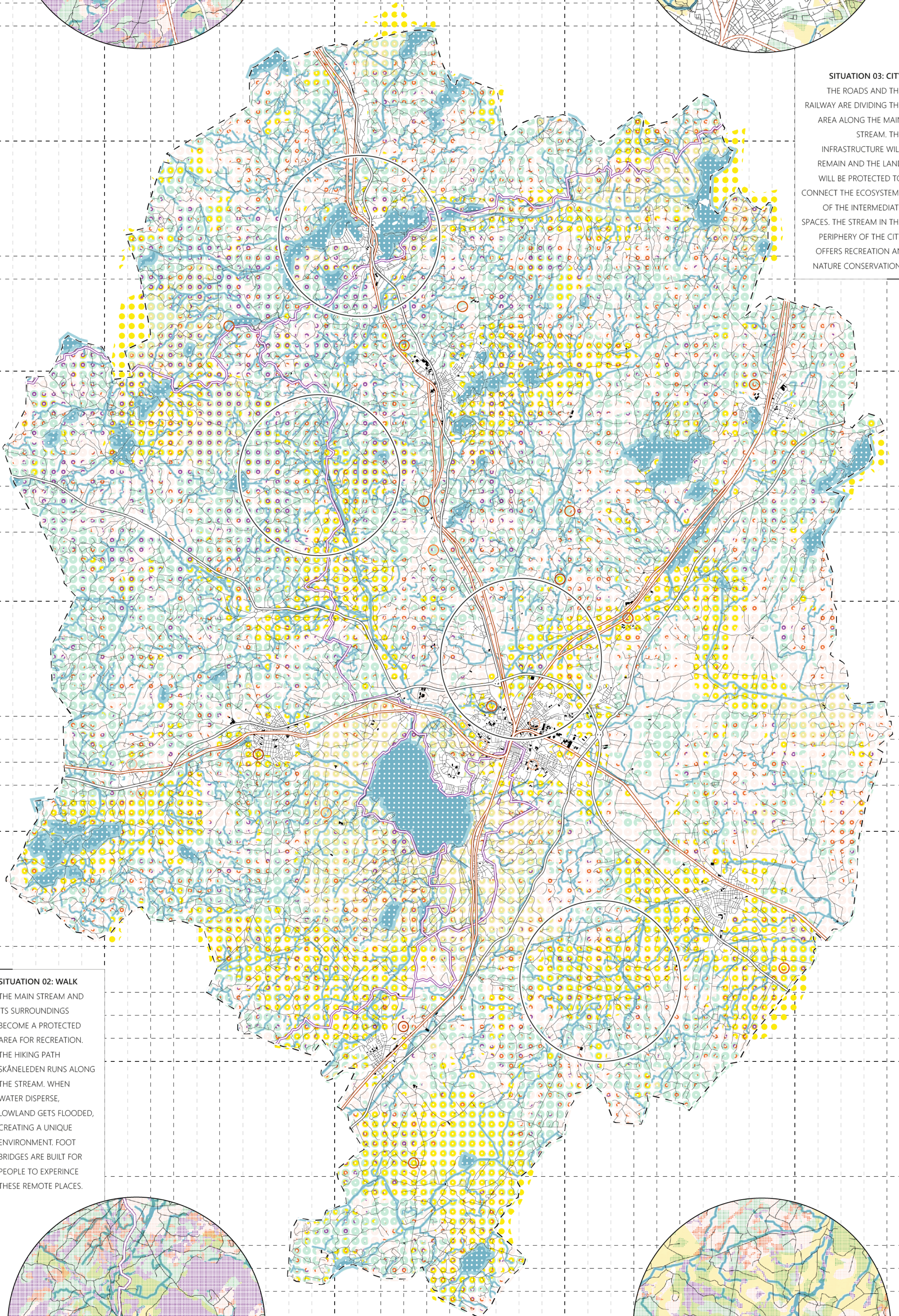
SITUATION 01: DIVISION

THE AREA AROUND THE LAKE IS PROTECTED SINCE IT CONSTITUTES A DIVERSE HABITAT. THESE WETLANDS ARE UNACCESSIBLE AND NON-PRODUCTIVE. ON THE SOUTH SIDE OF THE LAKE, THERE IS MORE WATER AND THRIVING ALDER TREES. ON THE NORTH SIDE, THERE IS AGRICULTURAL FIELDS AND FORESTS OF DIFFERENT FUNCTIONS.



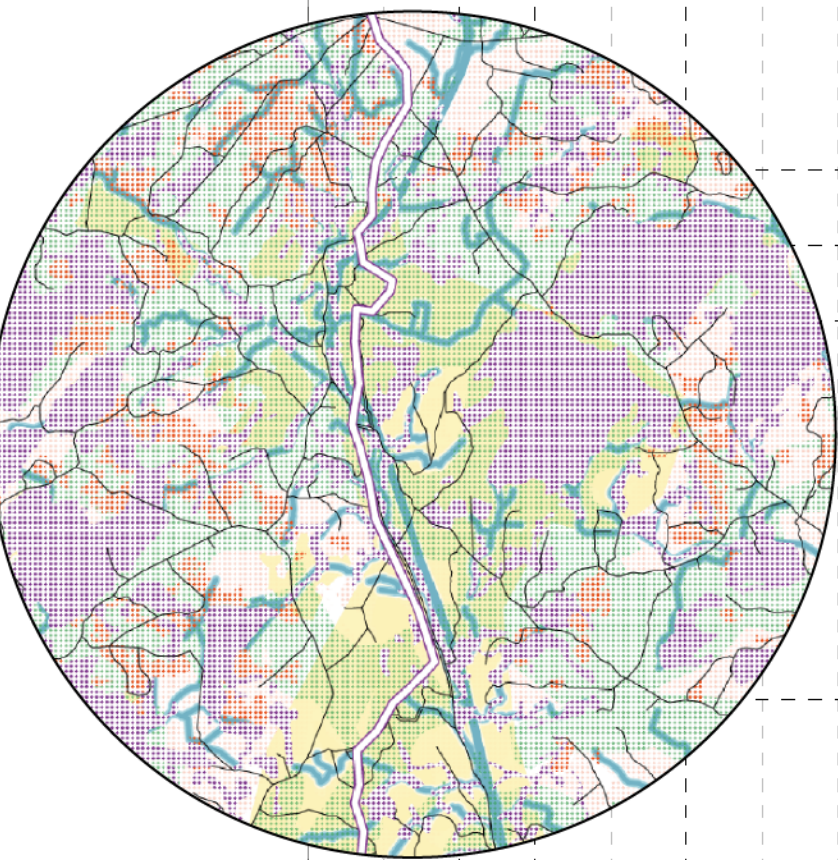
SITUATION 03: CITY

THE ROADS AND THE RAILWAY ARE DIVIDING THE AREA ALONG THE MAIN STREAM. THE INFRASTRUCTURE WILL REMAIN AND THE LAND WILL BE PROTECTED TO CONNECT THE ECOSYSTEMS OF THE INTERMEDIATE SPACES. THE STREAM IN THE PERIPHERY OF THE CITY OFFERS RECREATION AND NATURE CONSERVATION.



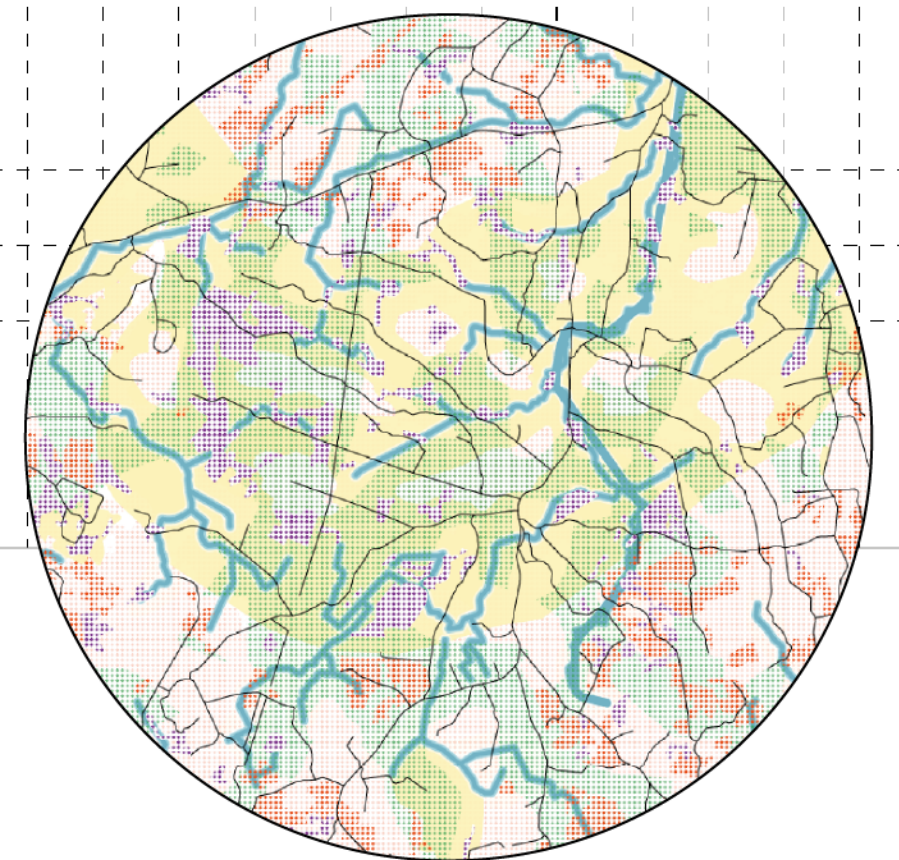
SITUATION 02: WALK

THE MAIN STREAM AND ITS SURROUNDINGS BECOME A PROTECTED AREA FOR RECREATION. THE HIKING PATH SKÅNELEDEN RUNS ALONG THE STREAM. WHEN WATER DISPERSE, LOWLAND GETS FLOODED, CREATING A UNIQUE ENVIRONMENT. FOOT BRIDGES ARE BUILT FOR PEOPLE TO EXPERIENCE THESE REMOTE PLACES.

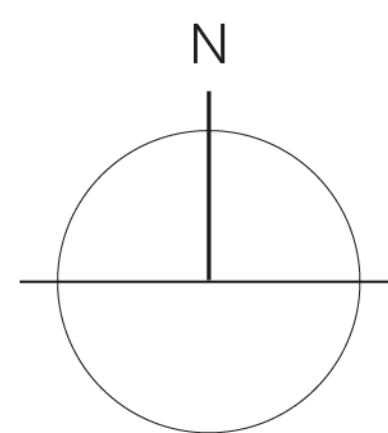


SITUATION 04: CLUSTER

THE CLUSTER OF STREAMS CREATES A VARIOUS LANDSCAPE. THESE UNIQUE SPACES ARE PRESERVED, WHILE THE LAND IN BETWEEN THE STREAMS ARE POCKETS FOR PRODUCTIVE PURPOSES, BOTH FOR AGRICULTURE AND FORESTRY. HENCE, MORE TREES BY THE WATER AND CROPLANDS ON LESS MOIST LAND.

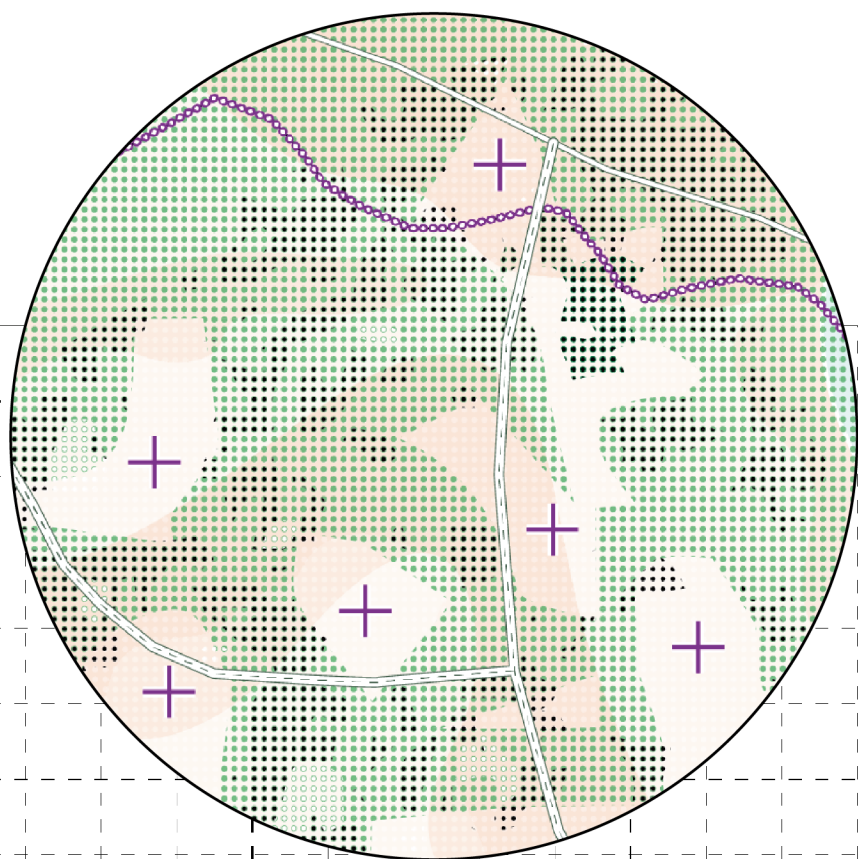


- WETLAND FOREST
- FELLING FOREST
- EXISTING PROTECTION
- EXPANDED PROTECTION
- FOREST
- OPEN LAND
- RAILWAY
- CAR ROAD
- HIKING PATH
- SETTLEMENT
- BUILDINGS
- EXISTING WATER
- EXPANDED WATER
- ENERGY
- SAWMILL
- INDUSTRY
- RETAILER



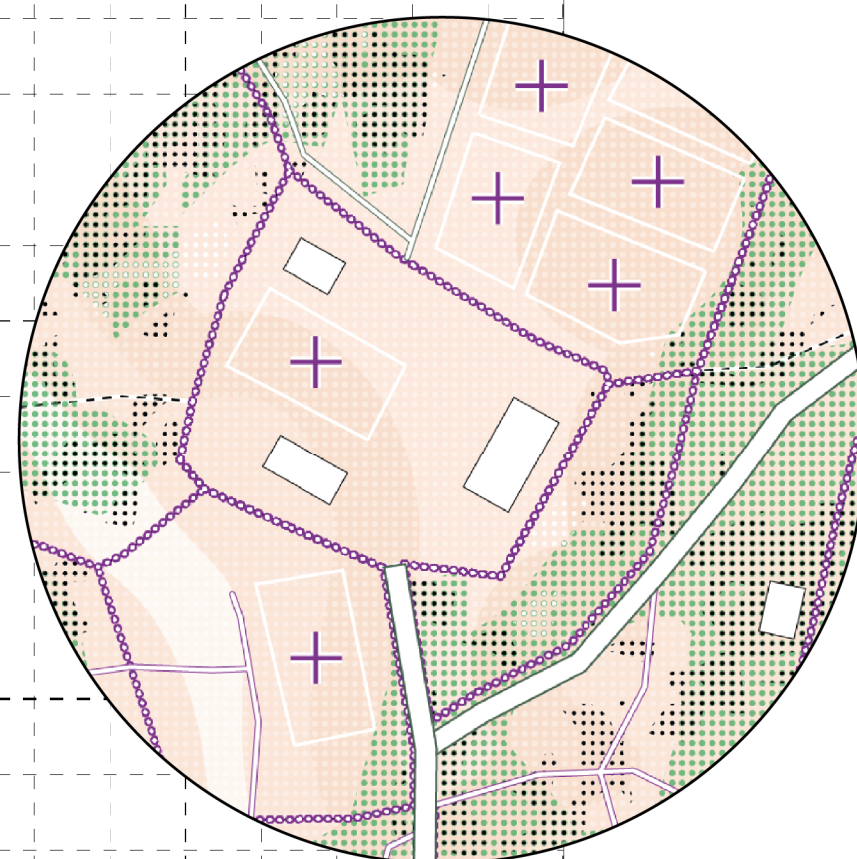
SITUATION 01: PEAT

THE WETLAND IS PROTECTED FROM PRODUCTIVE USE. PEOPLE CAN ACCESS THE AREA ON FOOT BRIDGES. THE FOREST CANOPY OPENS UP TO ALLOW FOR REFUGE. DIKES HAVE PREVIOUSLY SEPARATED WET FROM DRY. SUCH DIFFERENCES BECOME LESS DISTINCT, MORE DEPENDENT ON HEIGHT AND SOIL QUALITY.



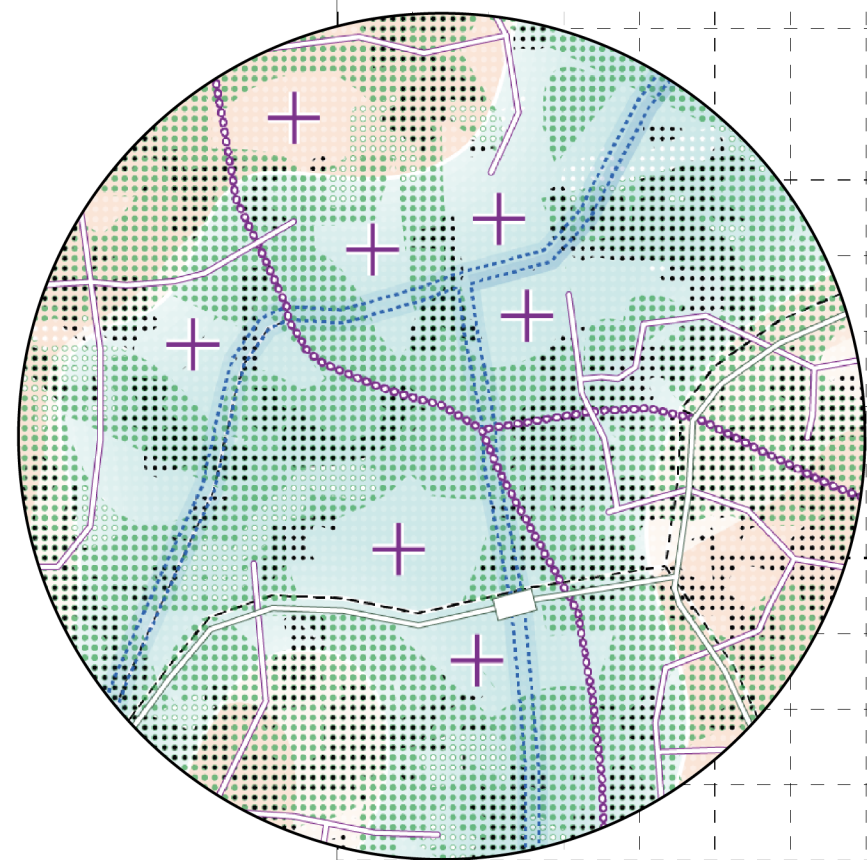
SITUATION 02: PASTURE

THESE PATCHES ARE SURROUNDED BY STONE WALLS, WITH BUILDINGS IN THE CENTRAL PATCH. THE ENTIRE AREA HAS BEEN USED AS PASTURE AND CROPLAND. THE NUTRIENT DEPLETED SOIL ALLOWS FOR SMALL EXPERIMENTS OF TREE PLANTATIONS. THE ENCLOSED PATCHES BECOME GARDENS OF DOMESTICATED FOREST.



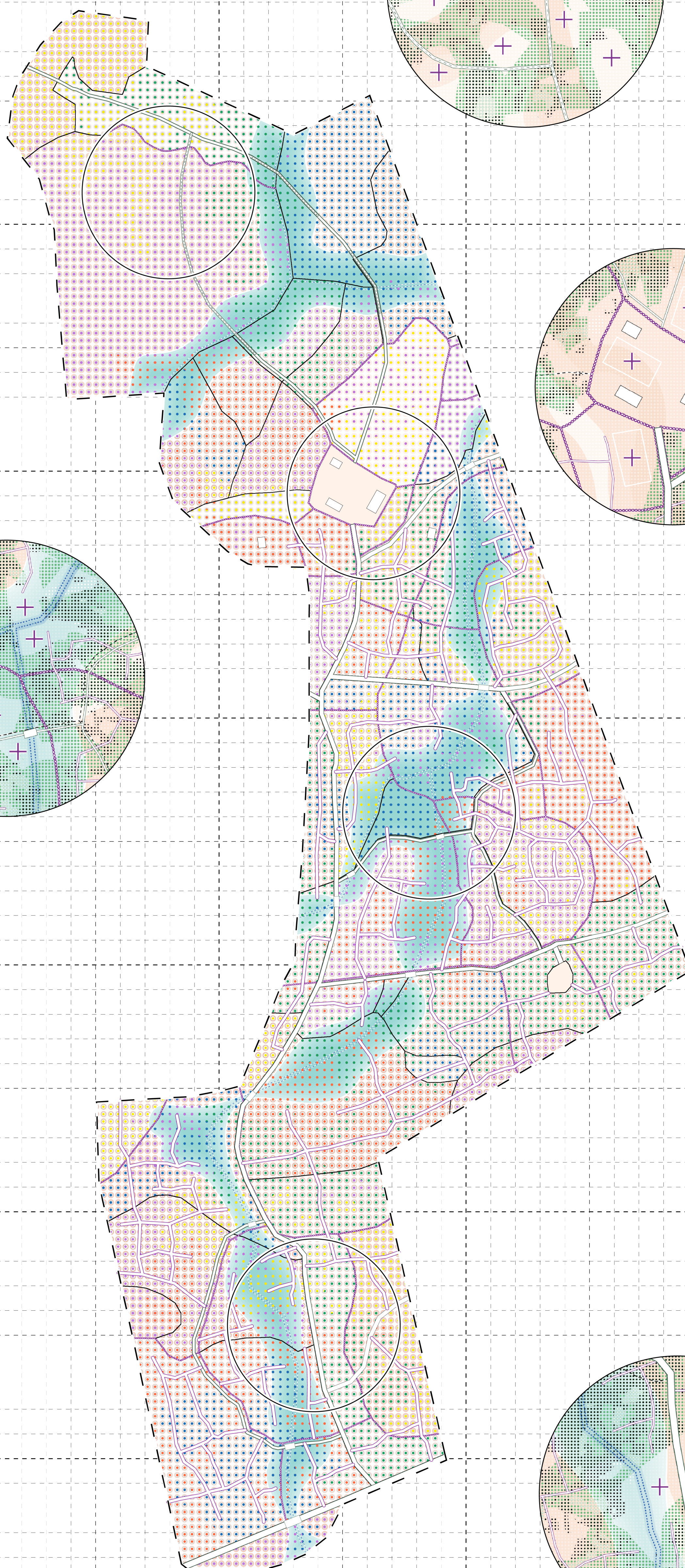
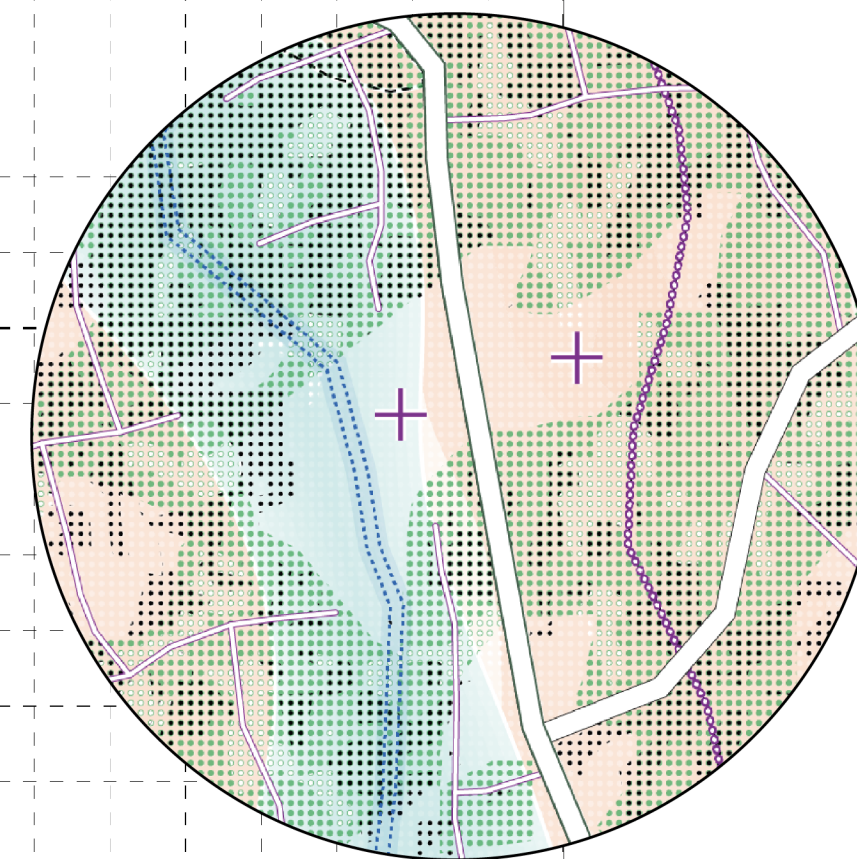
SITUATION 03: FLOOD

FLOODING MAKES THE STREAM EXPAND, CHANGING THE CONDITIONS FOR THE FLORA AND FAUNA. A BRIDGE IS NEEDED WHERE THE ROAD CROSSES THE STREAM. THE FORMER CAR ROAD BECOME OVERGROWN AND SERVE AS A WALKING PATH. TRAMPLED PATHWAYS INITIATE EXPLORATION OF MYSTICAL SPACES IN THE FOREST.



SITUATION 04: OPENING

ARRIVING ON THE MAIN ROAD, WITH DENSE FOREST ON BOTH SIDES. 100 METRES DOWN THE ROAD, THE FOREST OPENS UP. TO THE WEST, THE STREAM RUNS PARALLEL TO THE ROAD. ON THE EAST SIDE, A GLADE WHICH IS A PLACE TO SETTLE DOWN, START A CAMPFIRE, BUILD A TREE HOUSE, AND OBSERVE THE SURROUNDINGS.



- ALDER
- BEECH
- BIRCH
- PINE
- SPRUCE
- YOUNG/OLD FOREST
- MIXED FOREST
- NO WORK
- CLEANING
- THINNING
- FELLING
- BUILDING
- WATER
- WITCHCRAFT SPACE
- CAR ROAD
- WALKING PATH
- FOOTBRIDGE
- WITCH PATH
- STONES
- EXISTING PATCHES
- EXISTING WATER

