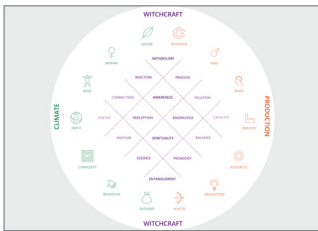
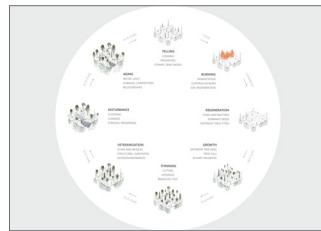


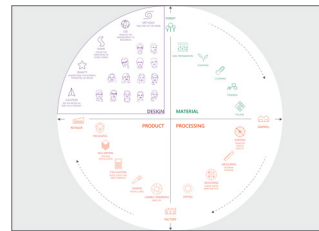
VISION



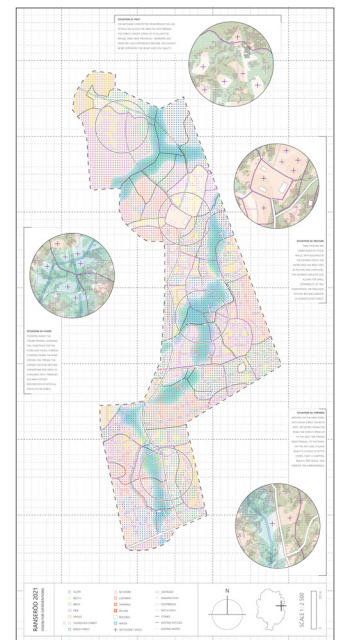
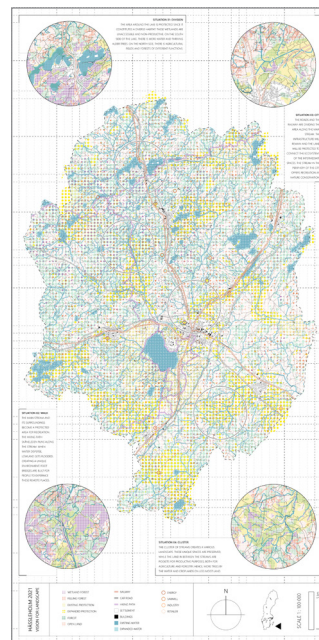
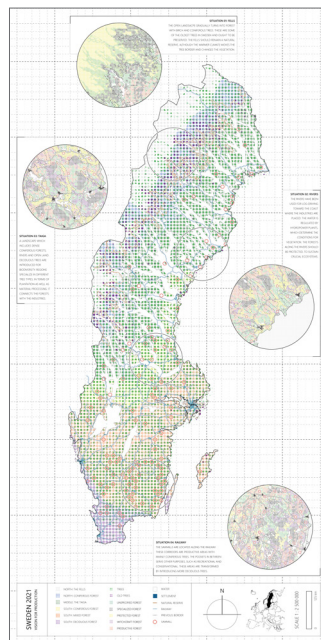
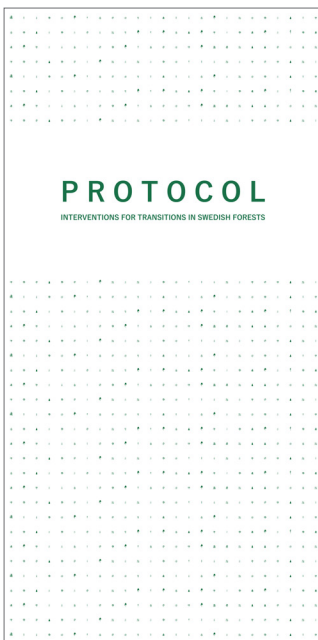
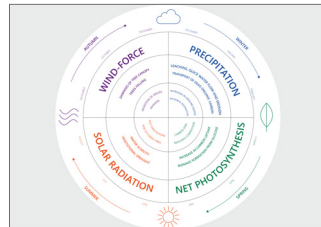
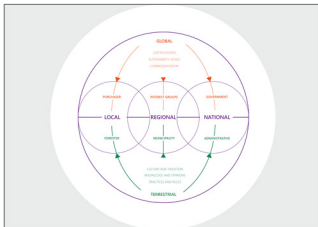
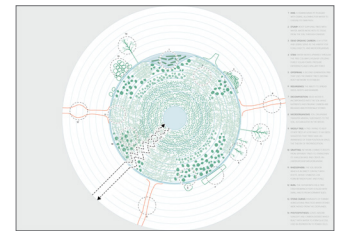
SWEDEN



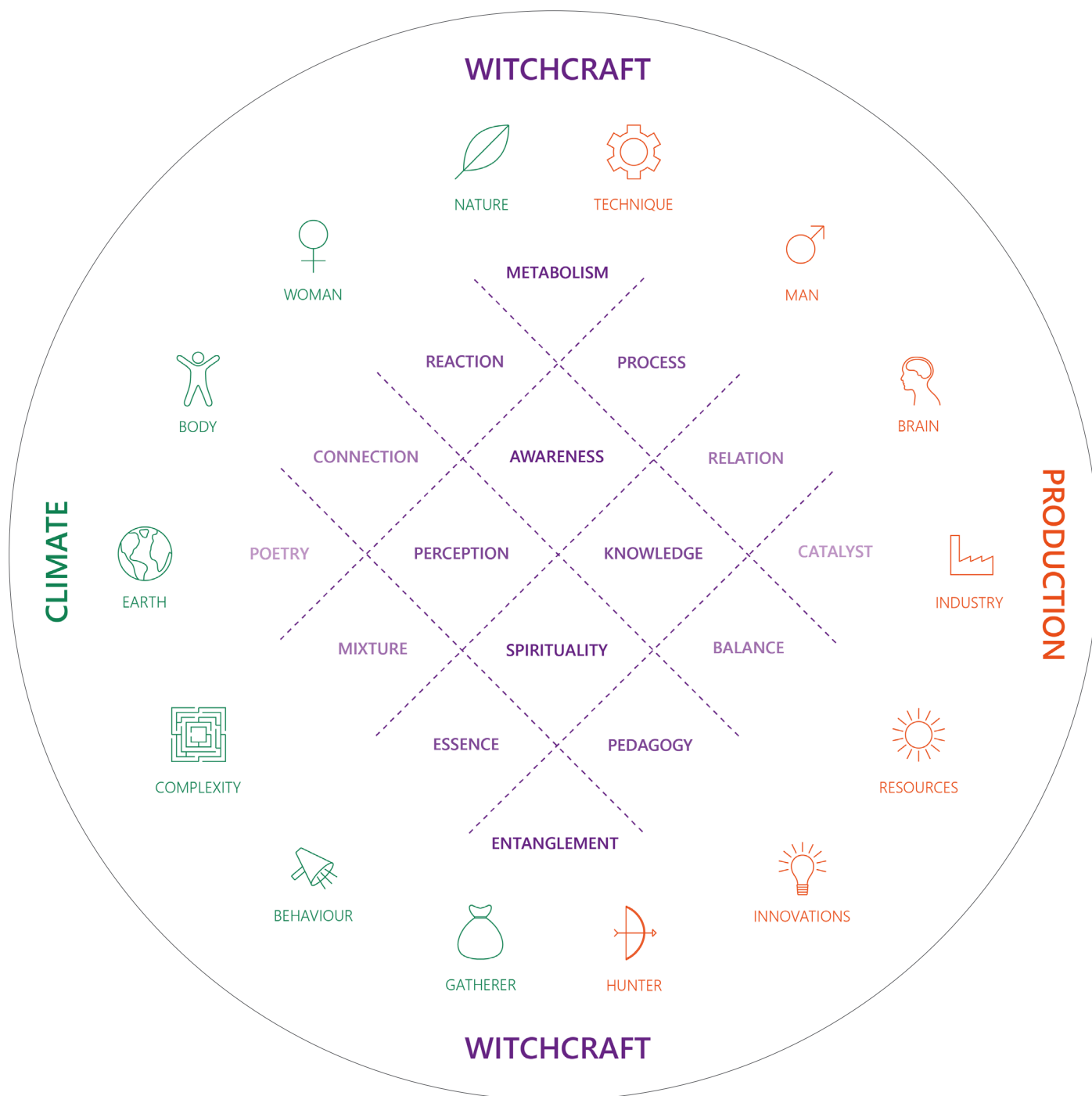
HÄSSLEHOLM



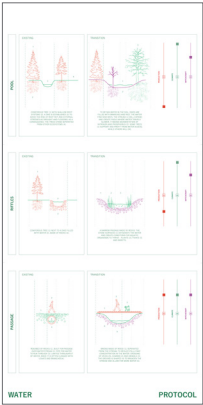
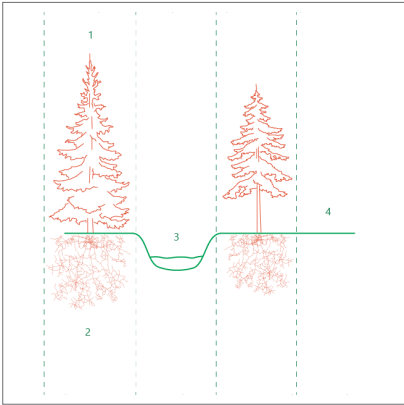
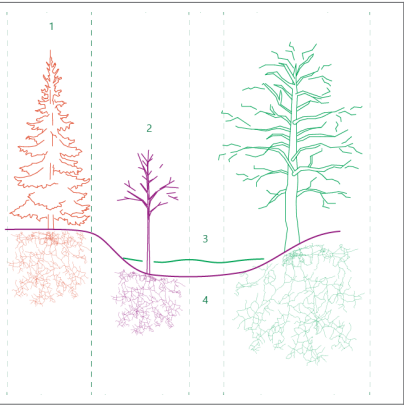

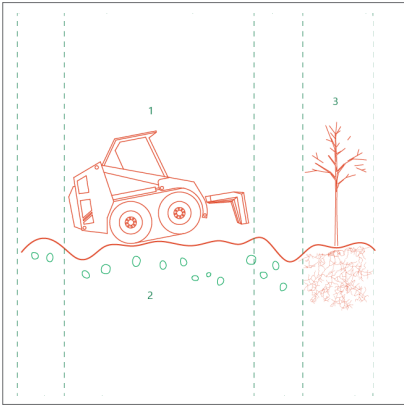
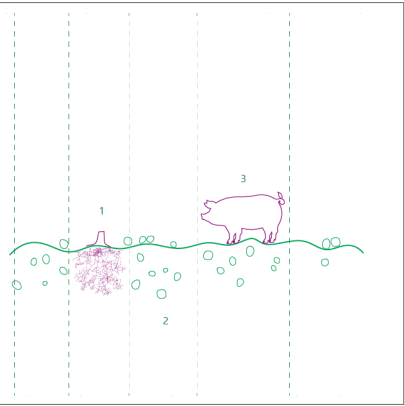
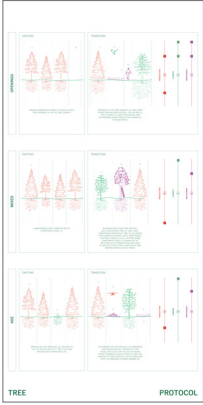
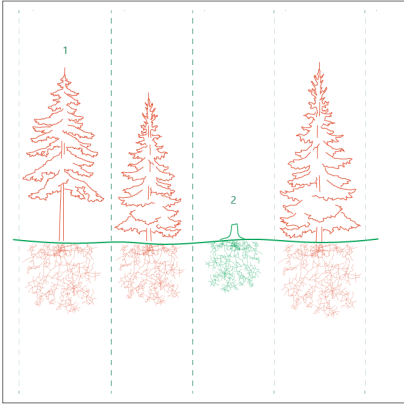

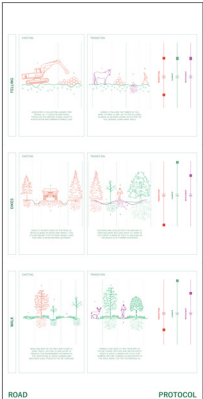
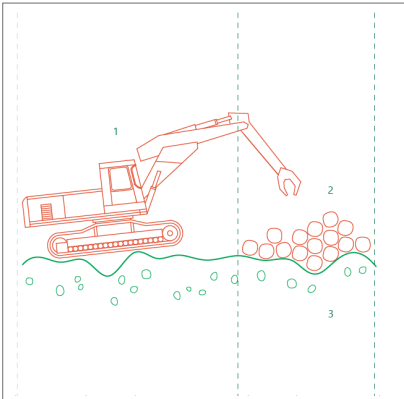
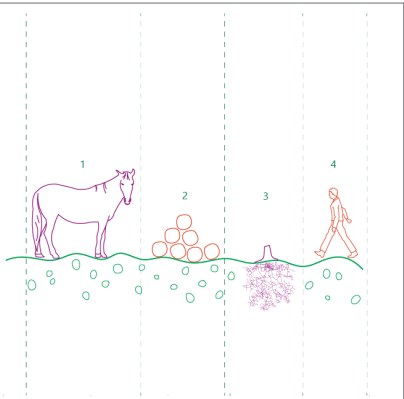
RANSERÖD

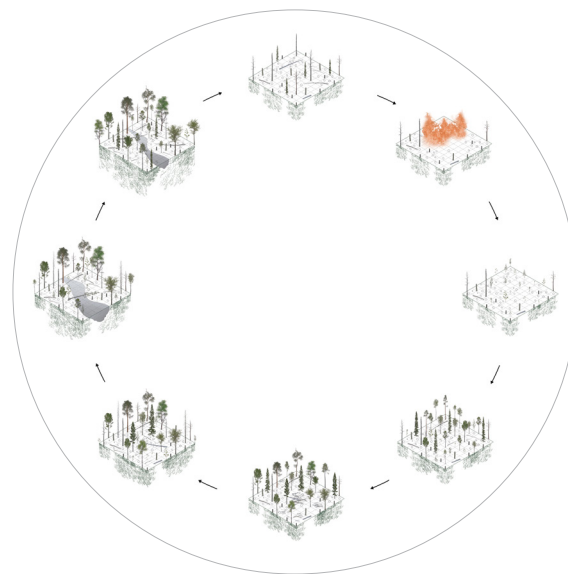
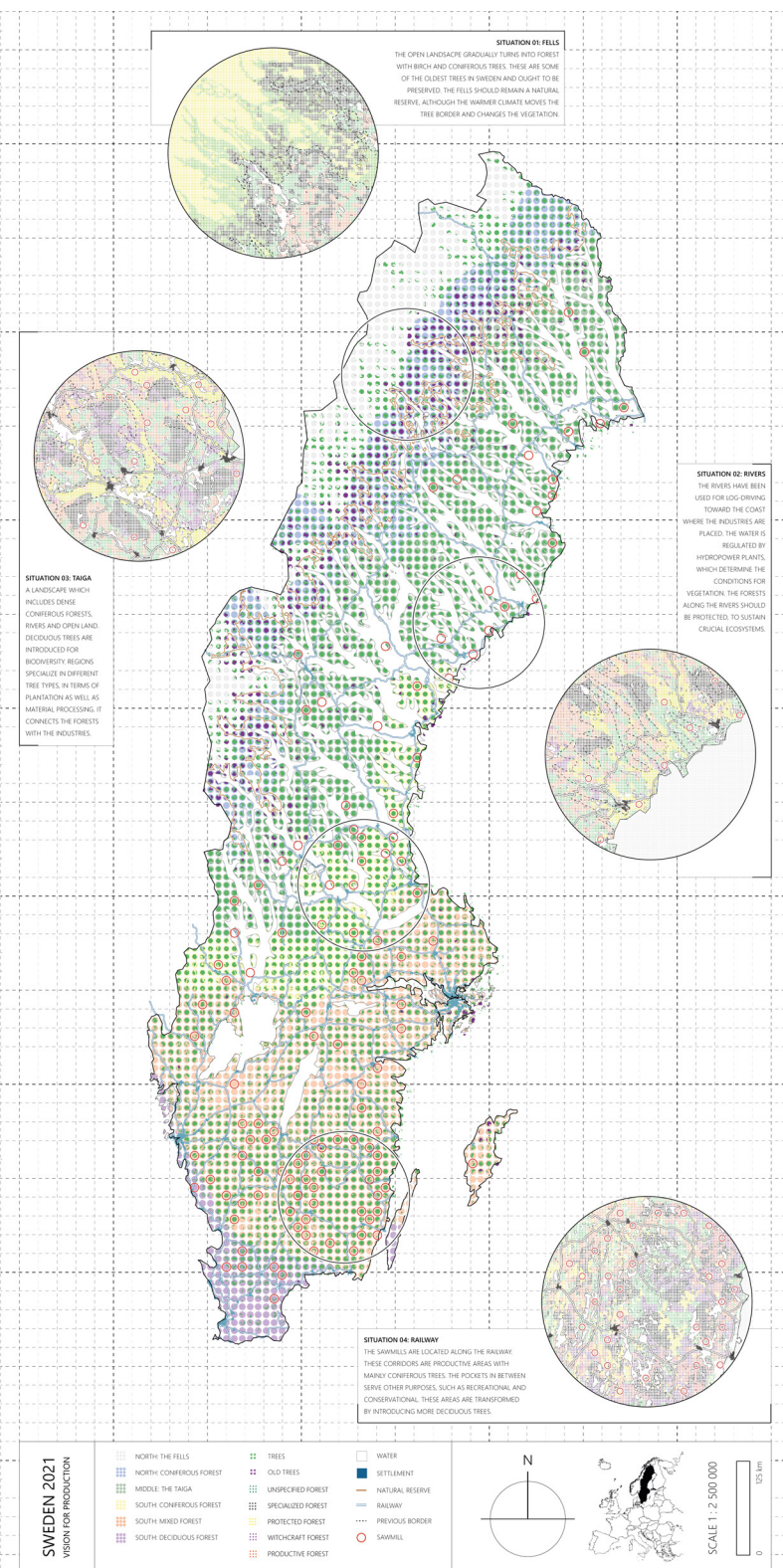


THIS IS A VISION FOR A MAGIC FOREST LANDSCAPE, EXPLORING CONNECTIONS BETWEEN CULTURE, PRODUCTION, AND ECOLOGY IN SWEDEN. RATHER THAN SEEING THE SPACE AS A COMPOSITION OF TREES, RECOGNIZING HOW THE COMPONENTS OF THE FOREST ARE EXPOSED AND INTERRELATED. THIS ENTANGLEMENT IMPLIES A STRUCTURAL TRANSFORMATION AND A CHANGE IN OUR PERCEPTION. THE MAGIC IS ABOUT SEEING THE FOREST FOR WHAT IT IS.

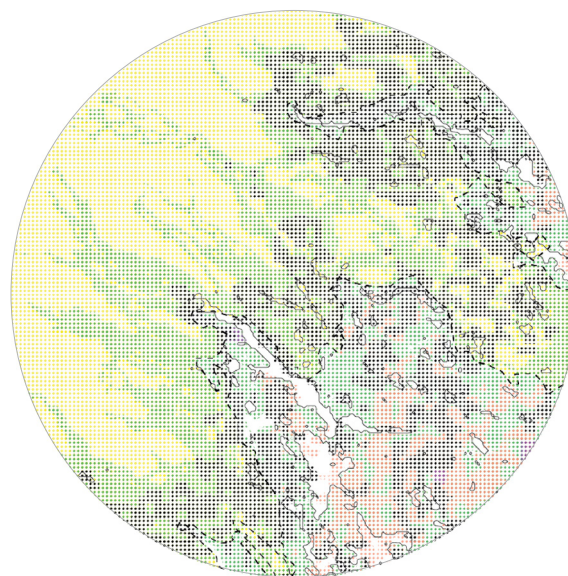


WITCHCRAFT IS A DUALISTIC APPROACH WHICH CONNECTS THE SYSTEMS OF CLIMATE AND PRODUCTION. THE WITCH IS SOMEONE WHO CONSIDERS BOTH TRADITIONAL AND SCIENTIFIC METHODS. HE/SHE IS OUT IN THE FOREST TO OBSERVE AND TAKE PART, ALSO TO EXPERIMENT AND TAKE CARE. THIS APPROACH A WAY OF RECONNECTING AND RE-NEGOTIATING CURRENT PRACTICES AND UNDERSTANDING. RECONNECTION OF HUMAN AND ECOLOGIES, RURAL AND URBAN, RESOURCES AND CONSUMPTION.

PRINCIPLE	EXAMPLE : EXISTING	EXAMPLE : TRANSITION	METHOD
			<p>WATER : RELATION</p> <p>A SHIFT IS INSERTED, WHICH IS MODIFYING THE HIERARCHY AND CREATING TIGHT RELATIONSHIPS. THE DYNAMICS ARE CONSTANTLY CHANGING WHEN WATER FLOODS AND WITHDRAWS. EACH PART OF THE SYSTEM IS DEPENDENT ON THE OTHER, SOME SPECIES THRIVE AND OTHERS DO NOT.</p>
			<p>SOIL : ENTANGLEMENT</p> <p>PROCESSING THE SOIL IS AN ACT OF TERRAFORMING, WHETHER IT IS MECHANICAL OR ORGANIC. HIDDEN VARIABLES ARE REVEALED, ADDING TO THE COMPLEXITY OF THE SETTING. THE SOIL BECOMES A MIXTURE OF ENTANGLED COMPONENTS, CREATING HABITAT FOR SPECIES OF DIFFERENT NICHES.</p>
			<p>TREE : METABOLISM</p> <p>MEASURING ECOSYSTEMS TO UNDERSTAND METABOLIC PROCESSES, WHICH MEANS MAXIMIZING THE ENERGY ACQUISITION. USING FORESTRY METHODS OF INTERMEDIATIONS AND CHAIN REACTIONS, THE TREE AND THE DEAD WOOD BECOME CATALYSTS FOR CARBON SEQUESTRATION.</p>
			<p>ROAD : CONNECTION</p> <p>TRANSPORTING A TREE TRUNK TO THE ROAD REQUIRE COMPROMISES. BY SUBTRACTING THE EXCESS OF THE METHOD THE VALUE SYSTEM CHANGES. USING WHAT YOU ALREADY HAVE CONNECTS AND ACKNOWLEDGES THE ACTORS INVOLVED. MOVING A TREE BECOMES AN ACTION OF INTERDEPENDENCIES.</p>



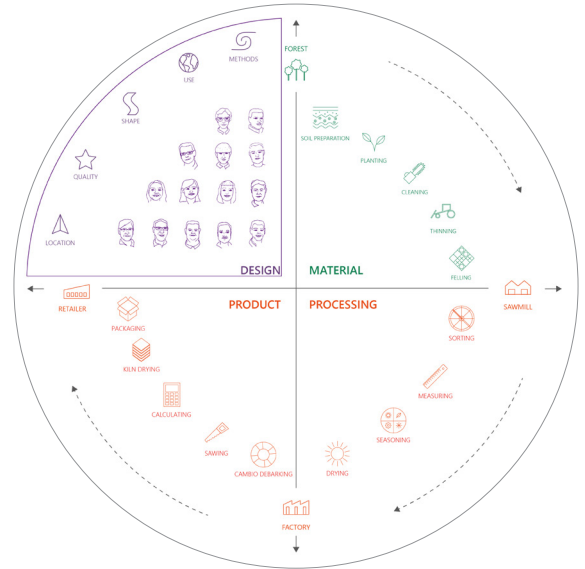
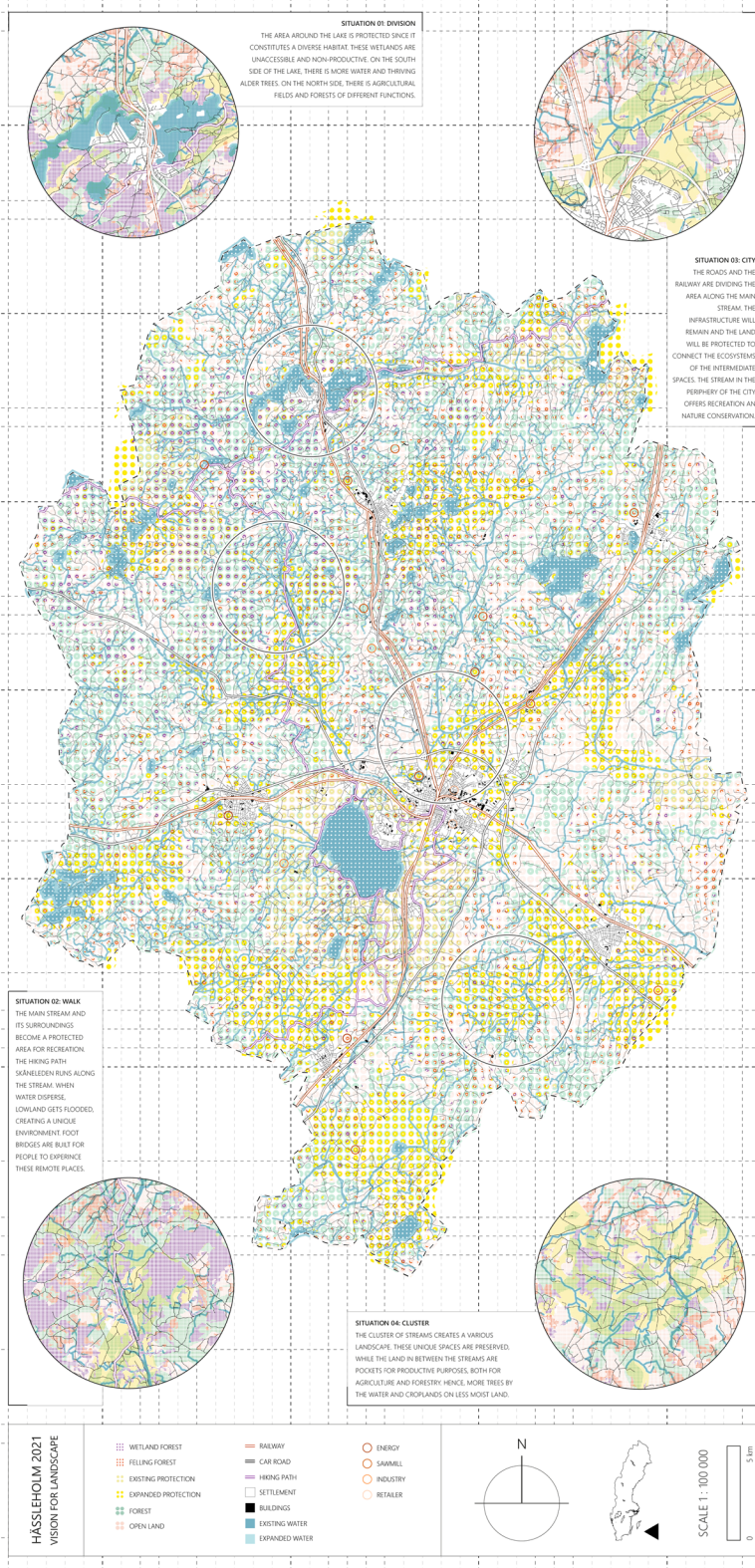
THIS IS A PROPOSAL FOR TRANSITIONING OF FOREST TYPOLOGIES. YOUNG TREES ARE FAST GROWING, SENSIBLE TO CHANGES AND HAVE SHALLOW ROOTS. OVER TIME, THE TREES CREATE CONNECTIONS TO OTHER SPECIES IN THE SYSTEM, LIKE EXTENSIVE ROOT NETWORKS THAT ALSO NURTURE OTHER PLANTS.



THE OPEN LANDSCAPE GRADUALLY TURNS INTO FOREST WITH BIRCH AND CONIFEROUS TREES. THESE ARE SOME OF THE OLDEST TREES IN SWEDEN AND OUGHT TO BE PRESERVED. THE FELS SHOULD REMAIN A NATURAL RESERVE, ALTHOUGH THE WARMER CLIMATE MOVES THE TREE BORDER AND CHANGES THE VEGETATION.



THIS SCAN REVEALS THE PRODUCTION AND ECOLOGICAL LAYERS OF THE LANDSCAPE. TODAY'S LASER TECHNOLOGY IS USED BY THE TIMBER INDUSTRY TO LOG TREES. IT COULD BE REPURPOSED, TO ESTIMATE THINGS LIKE BIODIVERSITY AND CALCULATE CARBON STOCKS. THE MEASUREMENTS DEPEND ON WHAT WE VALUE AND ARE ABLE TO IMAGINE IN THE FOREST LANDSCAPE. A MULTISPECIES TYPE OF TECHNOLOGY COULD BE USED TO PLAN MORE DIVERSE AND COMPREHENSIVE FORESTS.



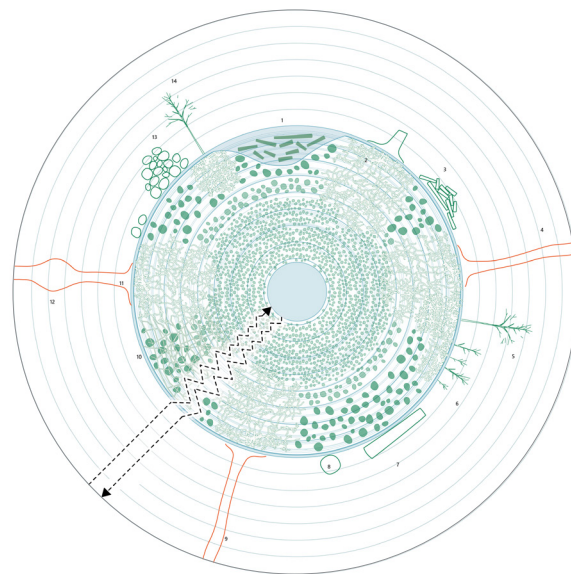
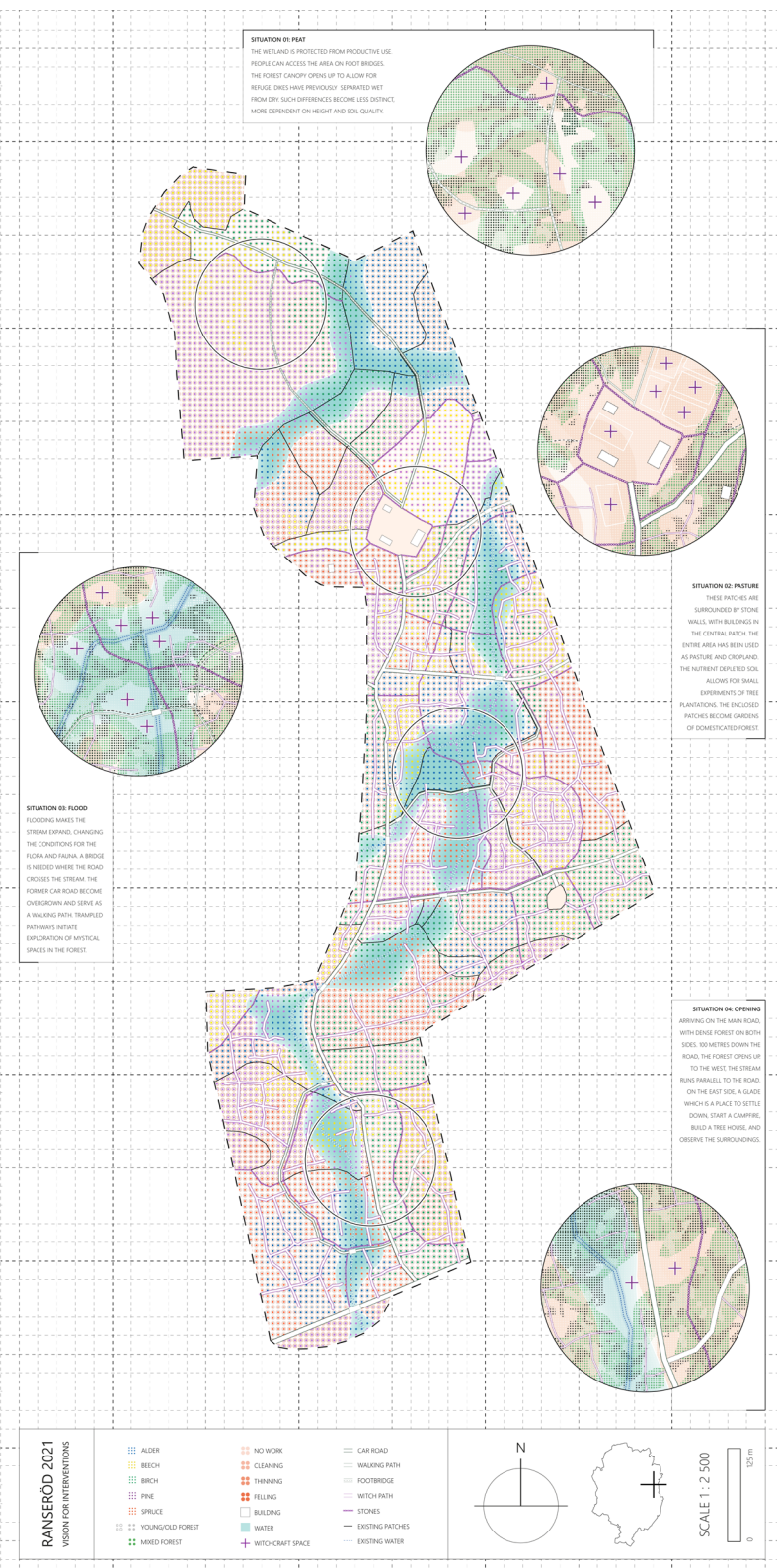
WOOD IS OFTEN ADVERTISED AS A SUSTAINABLE MATERIAL. AS ARCHITECTS WE SHOULD KNOW ABOUT THE MATERIALS THAT WE USE BY ENGAGING IN THE SUPPLY CHAIN AND COLLABORATE WITH OTHER ACTORS. WE COULD USE LESS AND LEARN HOW TO USE WOOD OF DIFFERENT TYPES, DIMENSIONS, SHAPES, AND QUALITIES.



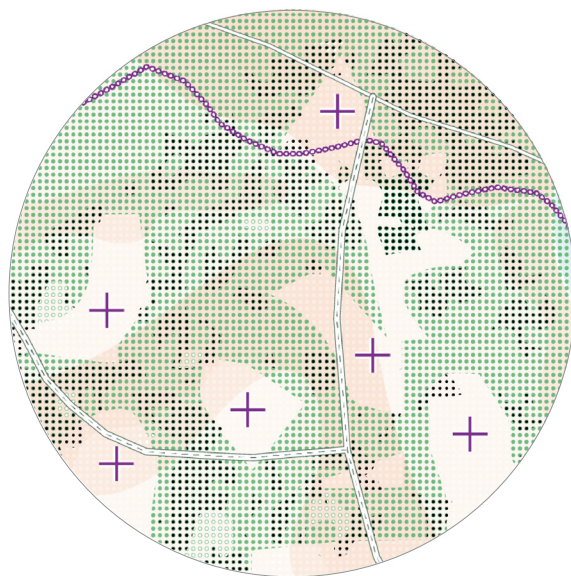
THE CLUSTER OF STREAMS CREATES A VARIOUS LANDSCAPE. THESE UNIQUE SPACES ARE PRESERVED, WHILE THE LAND IN BETWEEN THE STREAMS ARE POCKETS FOR PRODUCTIVE PURPOSES, BOTH FOR AGRICULTURE AND FORESTRY. HENCE, MORE TREES BY THE WATER AND CROPLANDS ON LESS MOIST LAND.



RETHINKING COEXISTENCE MEANS IMAGINING SPACES OF DUALITY. THIS IS CRUCIAL SINCE WE DEPEND ON THE FOREST FOR BOTH RESOURCES AND ECOSYSTEMS. SEEING THE FOREST FOR THE TREES BECAUSE IT IS A SETTING WHERE COMPONENTS INTERACT. THIS SETTING IS AN EXAMPLE OF HOW ELEMENTS AND SYSTEMS ARE COMING TOGETHER IN ONE SPACE. I AM INVESTIGATING RELATIONS AND DRAWING A DIFFERENT HIERARCHY, THAT IS LESS ABOUT CATEGORISING AND MORE ABOUT INCLUSIVENESS.



THIS IS THE NEAR-SURFACE LAYER OF THE EARTH. THE SECTION SHOWS POTENTIAL SYNERGIES BETWEEN ORGANISMS. WE MUST LEARN ABOUT THE REGENERATIVE CAPACITY OF THESE PROCESSES TO REDEFINE OUR ENGAGEMENT WITH THE LIVING. IN THIS WAY, CURRENT ECOLOGIES MIGHT BE ABLE TO SUSTAIN.



THE WETLAND IS PROTECTED FROM PRODUCTIVE USE. PEOPLE CAN ACCESS THE AREA ON FOOT BRIDGES. THE FOREST CANOPY OPENS UP TO ALLOW FOR REFUGE. DIKES HAVE PREVIOUSLY SEPARATED WET FROM DRY. SUCH DIFFERENCES BECOME LESS DISTINCT, MORE DEPENDENT ON HEIGHT AND SOIL QUALITY.



<https://royaldanishacademy.com/project/see-forest-trees-transitions-swedish-production-landscapes>



Royal Danish Academy

Architecture
Design
Conservation