



A Story of Connections

*An intergenerational community in
The Faroe Islands based on
shared living*



The Royal Danish Academy of Fine Arts,
Schools of Architecture, Design and
Conservation

Institute of Architecture and Design
MA Spatial Design

Thesis programme
Chanette Jørundsdóttir Hansen, 140174
Thesis Supervisor: Tom Mose Petersen

Spring 2019

The following is a collection of sources of inspiration for my thesis.

Throughout my thesis work I have continued to add sources of inspiration to this booklet. The images are not in the order that I collected them in as they have been arranged into themes.

The front page is an image of the Nordic House (Norðurlandahúsið) in Tórshavn, The Faroe Islands. The image is by Chanette J. Hansen. The full image can be seen on page 21.



Inspiration for arrangement of apartments according to common outdoor space





이예원 | Linked by 'In-between' space / 해방촌 1인주거, 서울 '사이'



이예원 | Linked by 'In-between' space / 해방촌 1인주거, 서울 '사이'



이예원 | Linked by 'In-between' space / 해방촌 1인주거, 서울 '사이'







Previous and current page: Tórsbyrgi in Tórshavn in The Faroe Islands. The booklet “Interviews” contains more information about this housing complex.







Cluster of houses. Tinganes in the capital Tórshavn.



Habitat 67 by Moshe Safdie.



Access type as a social space. Outdoor staircase in Tórshavn, The Faroe Islands.



Terrace houses in Ørestad by Arkitektgruppen.

The houses are connected by a large staircase that also functions as a space for social interaction.





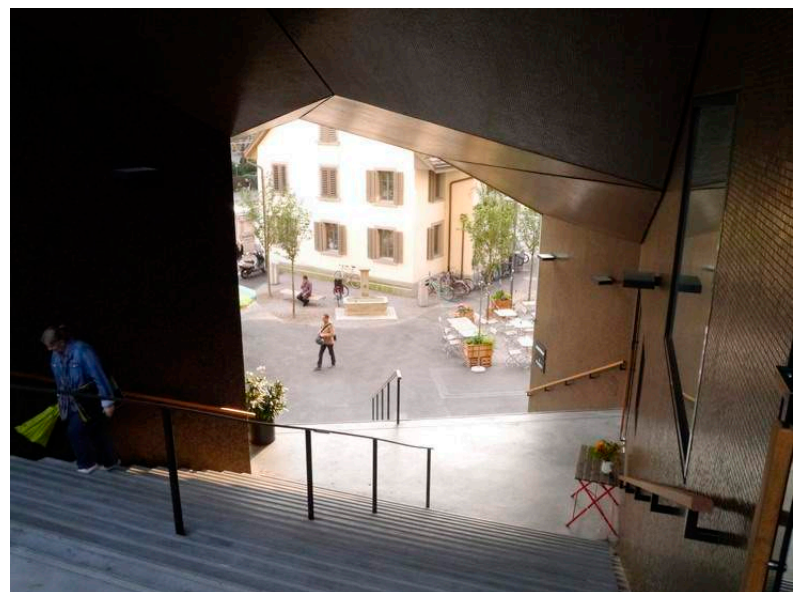
(Above) The Barbican centre. The stairs are a central part of the design and connect the spaces.

(Left) Glasir, the largest educational institute in The Faroe Islands. The large staircase is also a place to meet and hang out. Stair as a landscape.



(Above) Harpa concert hall in Reykjavík, Iceland. The stairs are a place for meeting and do not only have a functional purpose. The stair or access type as a social space in an interest I developed in semester 1 of the Masters programme.

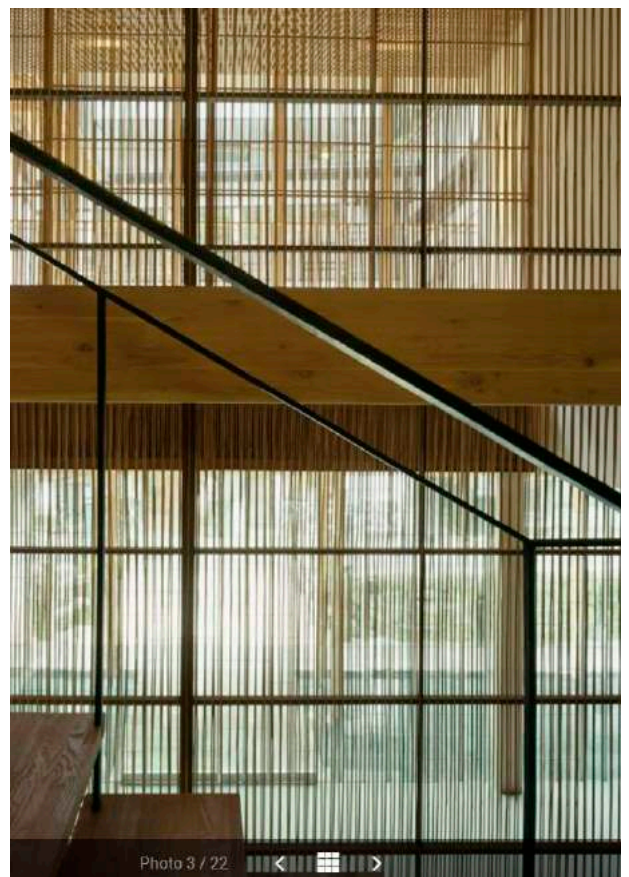
(Right) Kalkbreite residential housing by Müller Sigrüst architects. The building is located in Zürich, Switzerland.



In old days people would gather on the landing place when the fishermen returned home to hear how much they had caught and how the trip had gone. The landing place was therefore also a social space.



Landing place in Elduvík, The Faroe Islands





Inspiration for materials. The translucency of the wooden panels makes me think about traditional Faroese storehouses where the wooden panels are placed a bit apart to create good circulation inside the storehouse. Some storehouse are used for drying meat and therefore it is important there is good circulation.





The airbase in Mjørkadalur, close to Tórshavn. Despite that the building is very large it blends into the landscape.



Norðurlandahúsið (The Nordic House). The building blends into the landscape and appears smaller than what it is. The building can only stand here as it is shaped by the surroundings. The interior has different levels imitating the forever changing Faroese landscape.



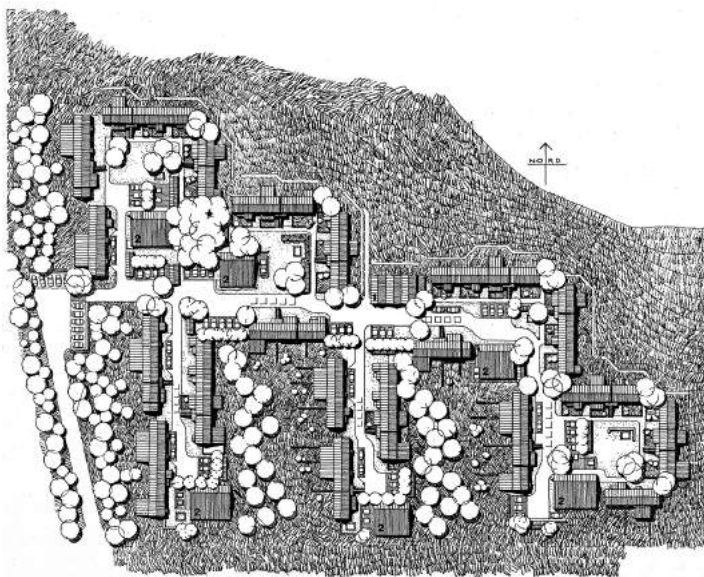
The Nordic House (Norðurlandahúsið) in Tórshavn, The Faroe Islands



Hotel Føroyar in Tórshavn. Similar to the airbase in Mjörkadalur (p. 13) this building blends into the landscape. Due to the shape and design the building does not look large when viewed from town.

Hotel Føroyar in Tórshavn. Similar to the airbase in Mjørkadalur (p. 13) this building blends into the landscape. Due to the shape and design the building does not look large when viewed from town.

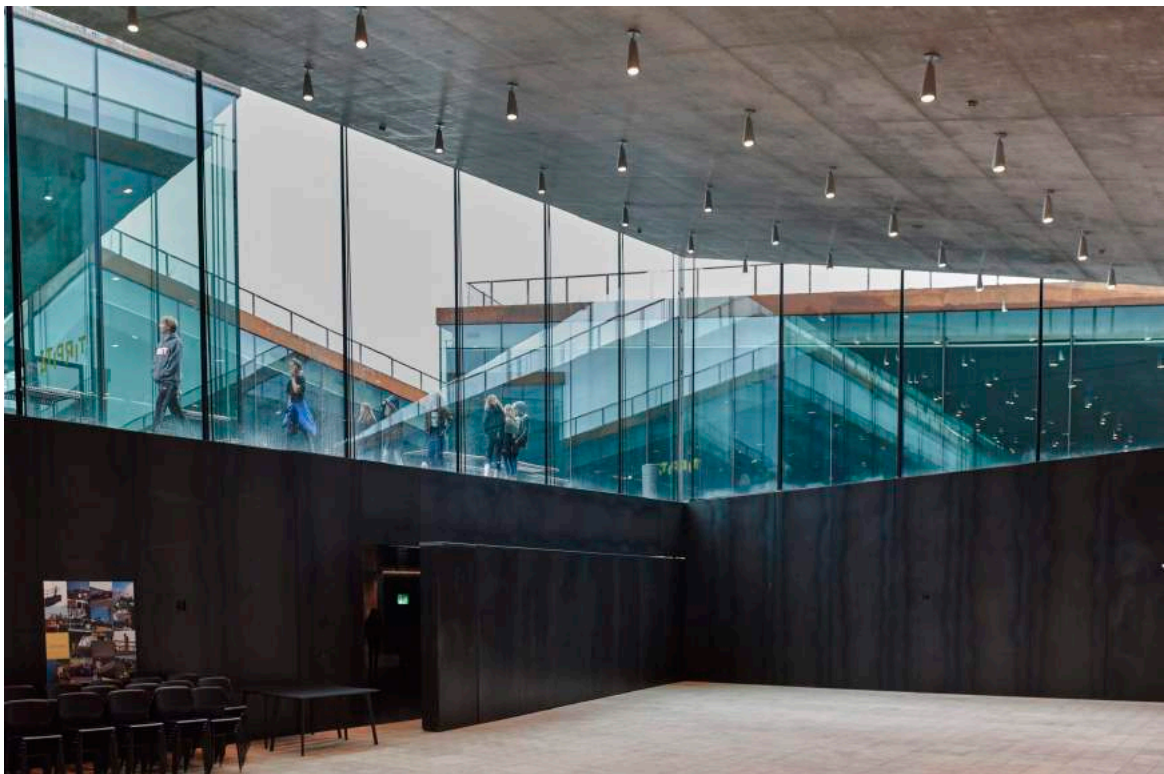




Tinggården in Herfølge, Denmark by Vandkysten architects. The houses are relatively small and are placed in small clusters around a common house.



Rokko housing by Tadao Ando. This building serves as inspiration for the terraced typology that I would like to work with in the stone quarry.



Building under ground. Tirpitz museum in Blåvand, Denmark.



(Above) Rafi Segal Villa: Inspiration for roof

(Right) Vand-kusten architects suggestion for a new type of housing in Nuuk, Greenland.





(Left) Shielded outdoor space: Skøyan school, Norway.

(Below) Gjáargarður, Guest-house in Gjógv, The Faroe Islands: Alcove for resting and sleeping.



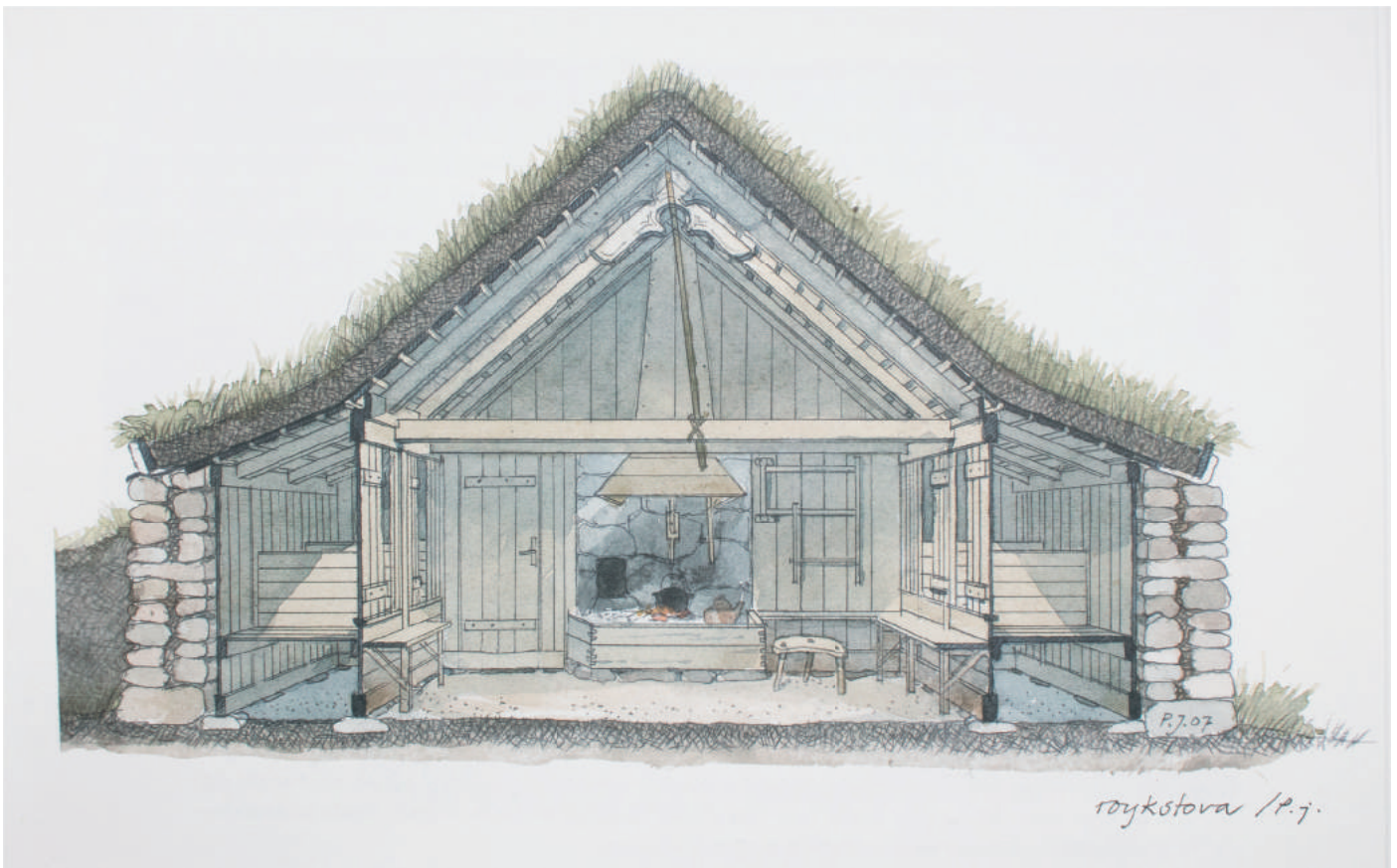


Mountain Dwellings in Ørestad by BIG architects.



Mountain Dwellings in Ørestad by BIG architects.





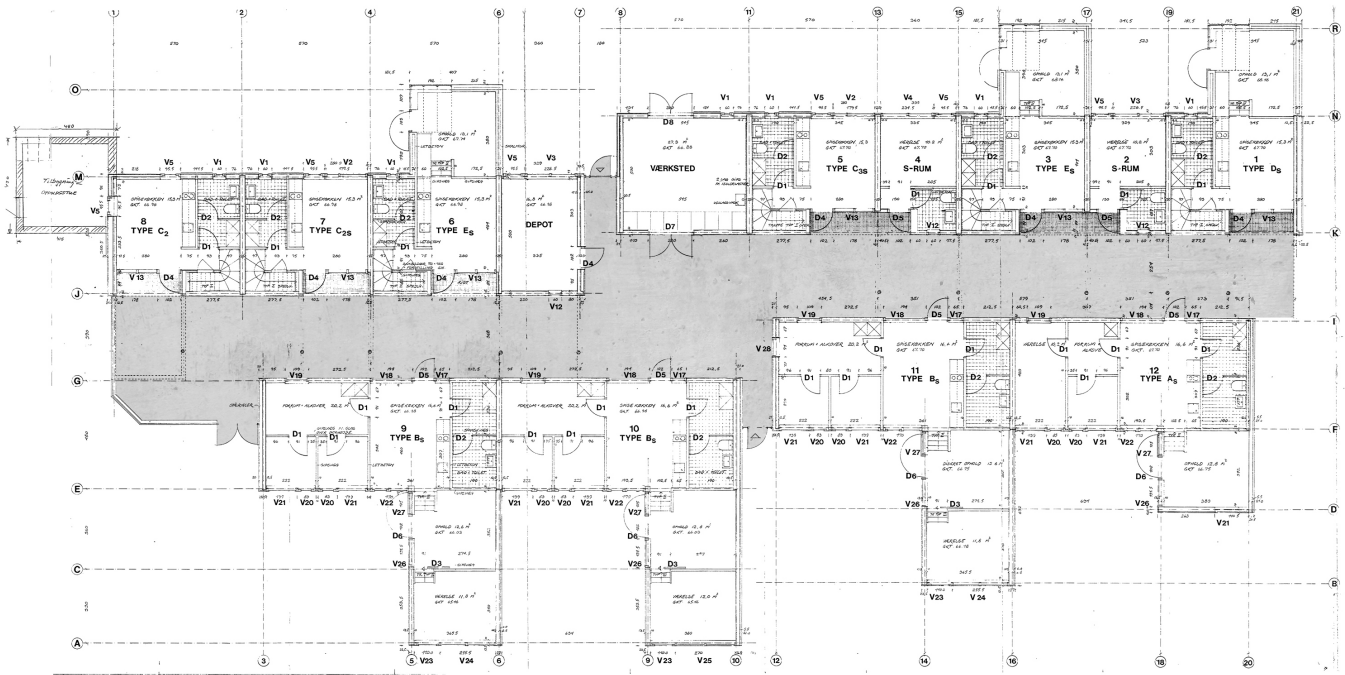
(Above) Merging between landscape and building: Tinganess in Tórshavn. The building looks like it has grown out to the stone.

(On the previous page and above) Old Faroese building traditions. People ate, slept and worked in the roykstova (the smoking room), which was the main room and sometimes the only room in old Faroese dwellings. The private space was very small, sometimes just an alcove in the wall (see number 4 in the plans on the previous page).

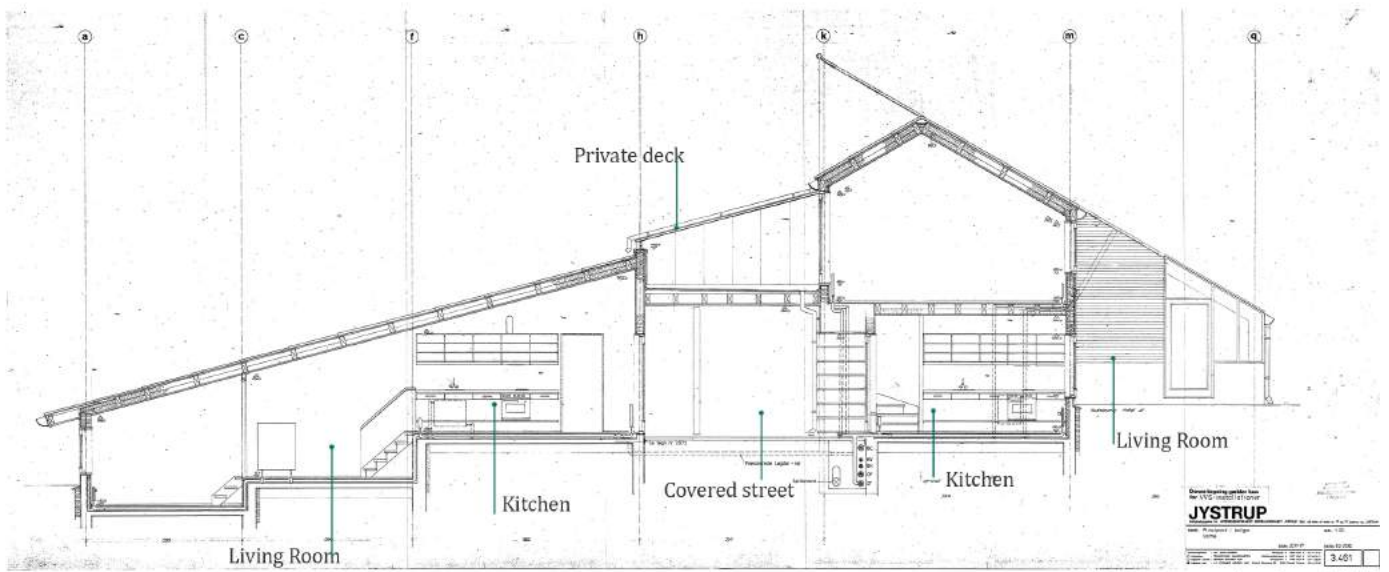
Taking inspiration from old Faroese dwellings the private apartments will be small. However they will share larger communal spaces.

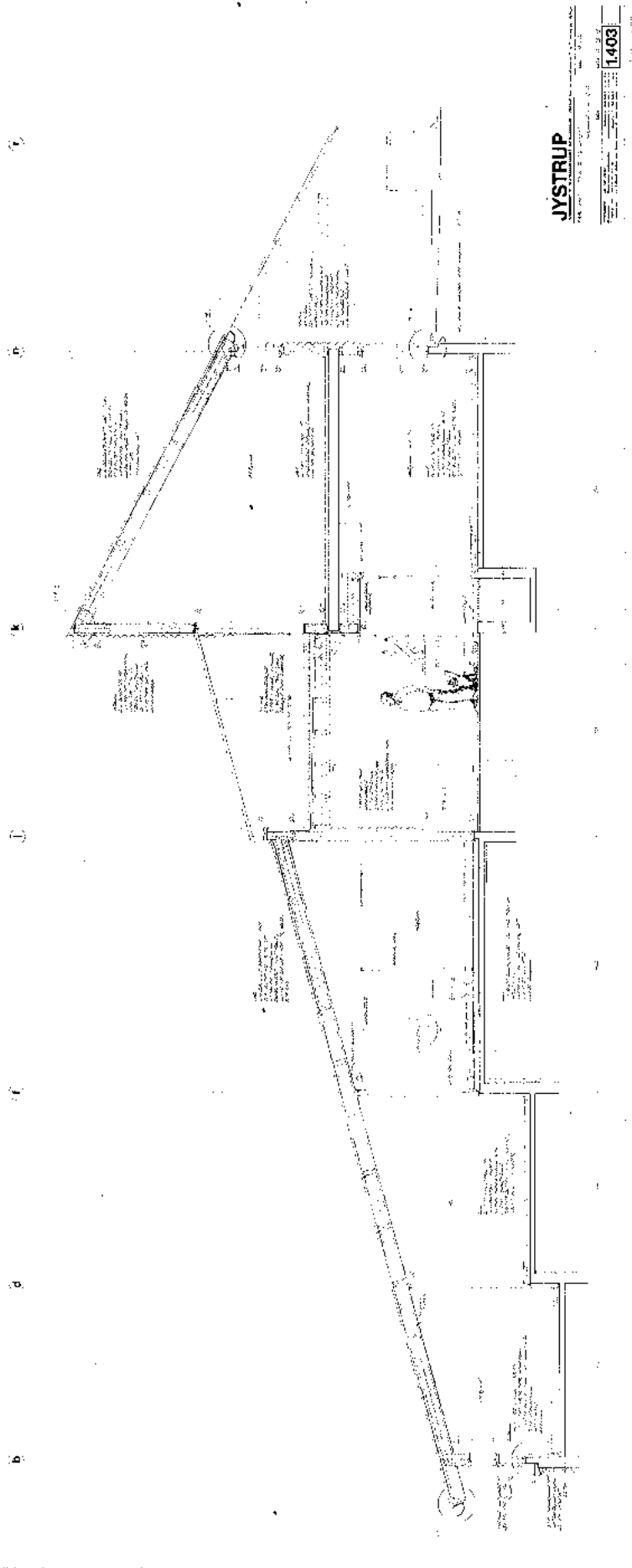


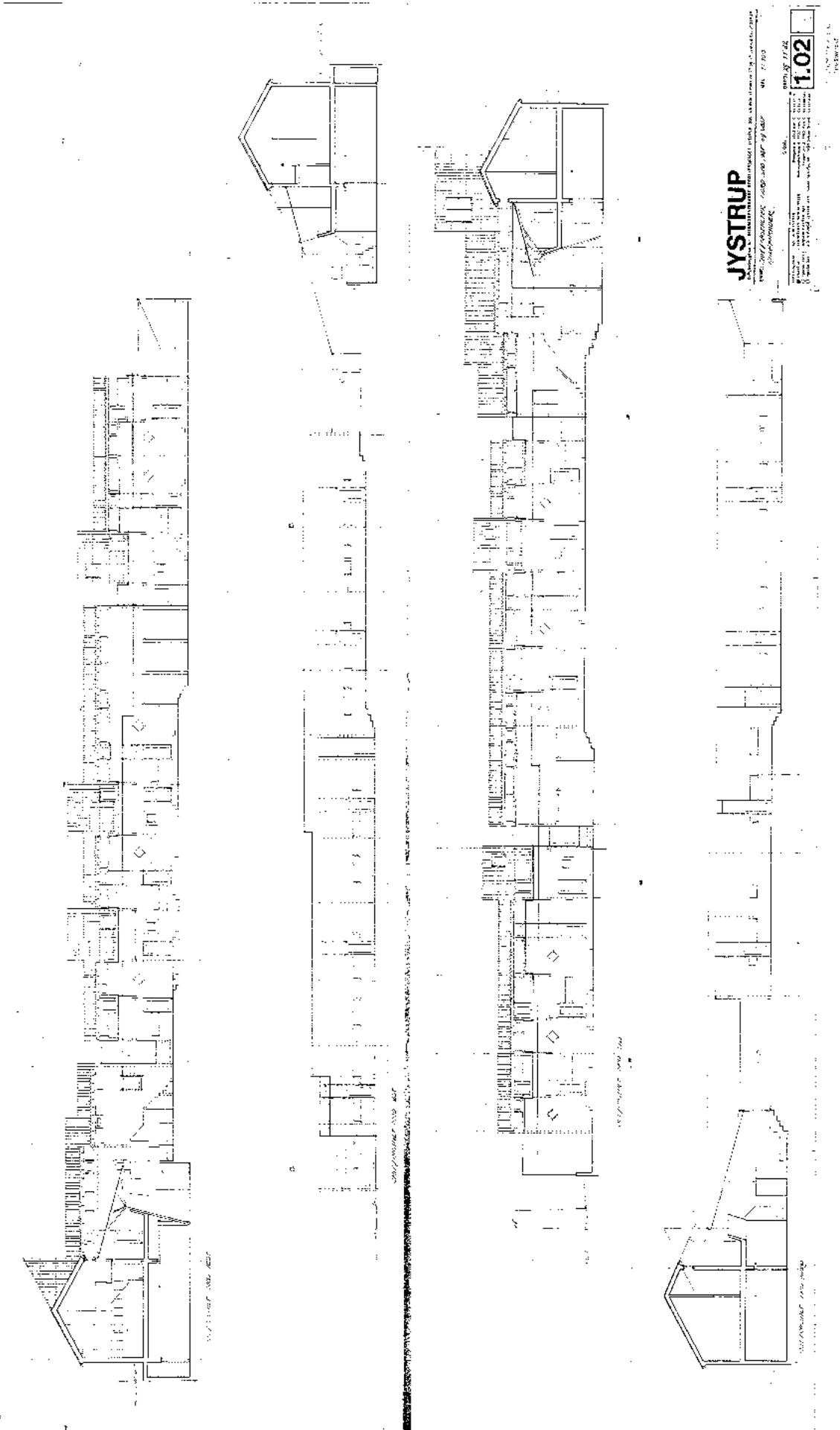
Lange Eng, Albertslund, Denmark by Dorthe Mandrup architects. The residents share several common rooms and have common dinners 6 days a week. This is one of the cohousing communities I visited during research for my written assignment last semester.



(Previous page and above and next 5 pages) Jystrup Savværk, Jystrup, Denmark by Vandkusten architects. All apartments are connected by two interior street hallways. The residents have extended their private sphere into the common hallways by occupying them with personal artefacts (see image on the next page). This is one of the cohousing communities I visited during research for my written assignment last semester.







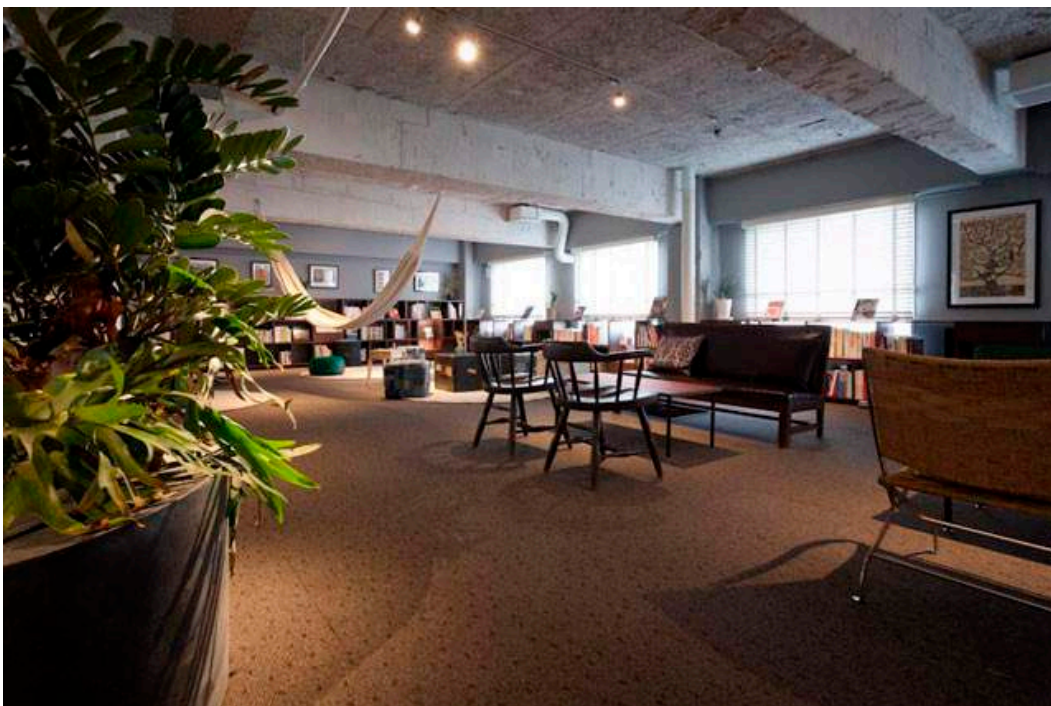
JYSTRUP

JYSTRUP
 10000 JYSTRUP RD. WILSONVILLE, OR 97154
 TEL: 503/638-1000 FAX: 503/638-1001
 WWW.JYSTRUP.COM
 ARCHITECTS
 10000 JYSTRUP RD. WILSONVILLE, OR 97154
 TEL: 503/638-1000 FAX: 503/638-1001
 WWW.JYSTRUP.COM
 ARCHITECTS
 10000 JYSTRUP RD. WILSONVILLE, OR 97154
 TEL: 503/638-1000 FAX: 503/638-1001
 WWW.JYSTRUP.COM
 ARCHITECTS

SHEET NO. 1.02
 OF 1.02







Common space in The Share, ReBITA in Toyko

6F

public lounge



Plan of one of the floors in The Share, ReBITA, in Tokyo.



The Village by Sunjay Puri Architects



Differentiating between private and communal. June14. Urban Living competition.



Inspiration for conservatory



Cross laminated timber construction



In her thesis project (2018) *Dwellings in Svalbard* Lise Helene Skafte Guldager explored how to create shelter through architecture