

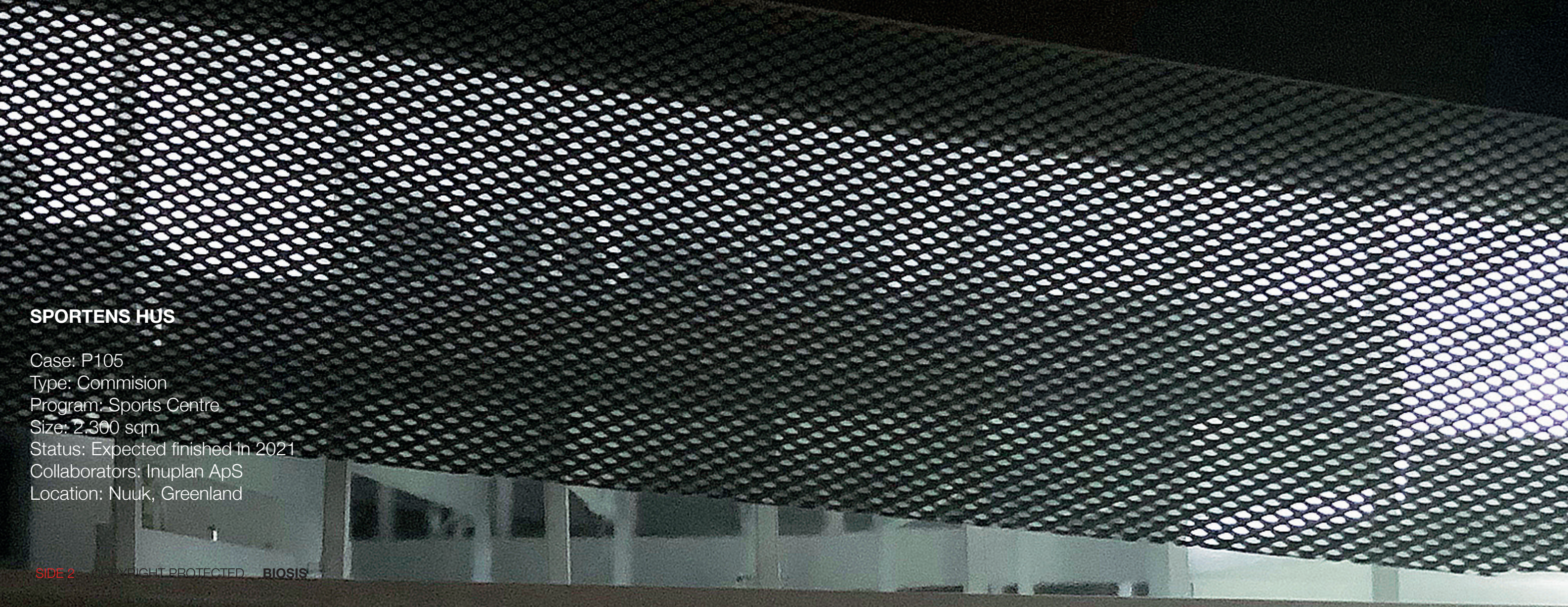
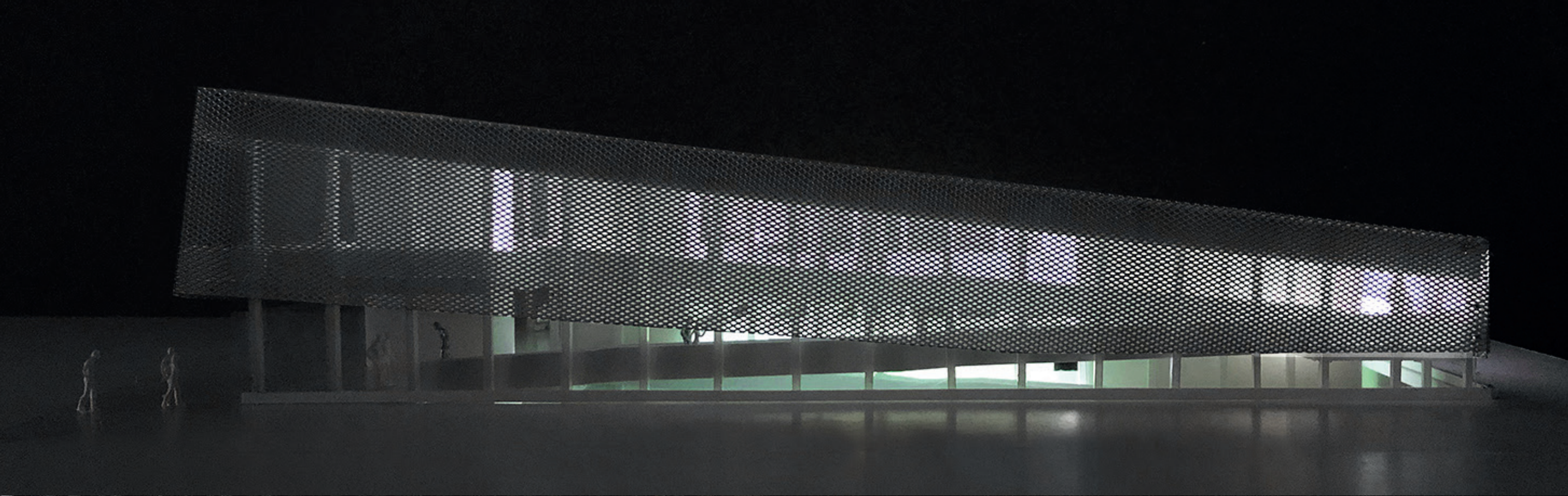
BIOSISTM

P094 **GARTNERIGRUNDEN**

P096 **QULLILERFIK**

P105 **SPORTENS HUS**

P121 **KULLURSUAQ**



SPORTENS HUS

Case: P105

Type: Commision

Program: Sports Centre

Size: 2,300 sqm

Status: Expected finished in 2021

Collaborators: Inuplan ApS

Location: Nuuk, Greenland



SPORTENS HUS

Case: P105

Type: Commision

Program: Sports Centre

Size: 2.300 sqm

Status: Expected finished in 2021

Collaborators: Inuplan ApS

Location: Nuuk, Greenland



KULLORSUAQ

Case: P121

Type: Commision

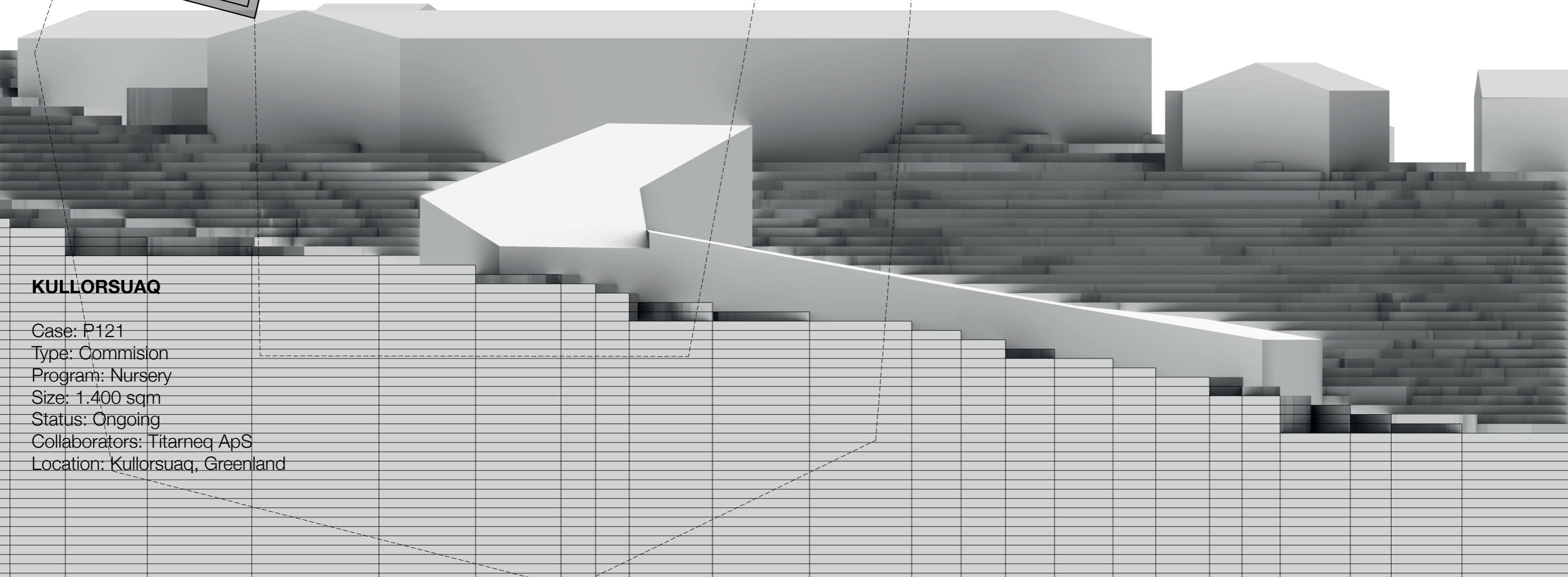
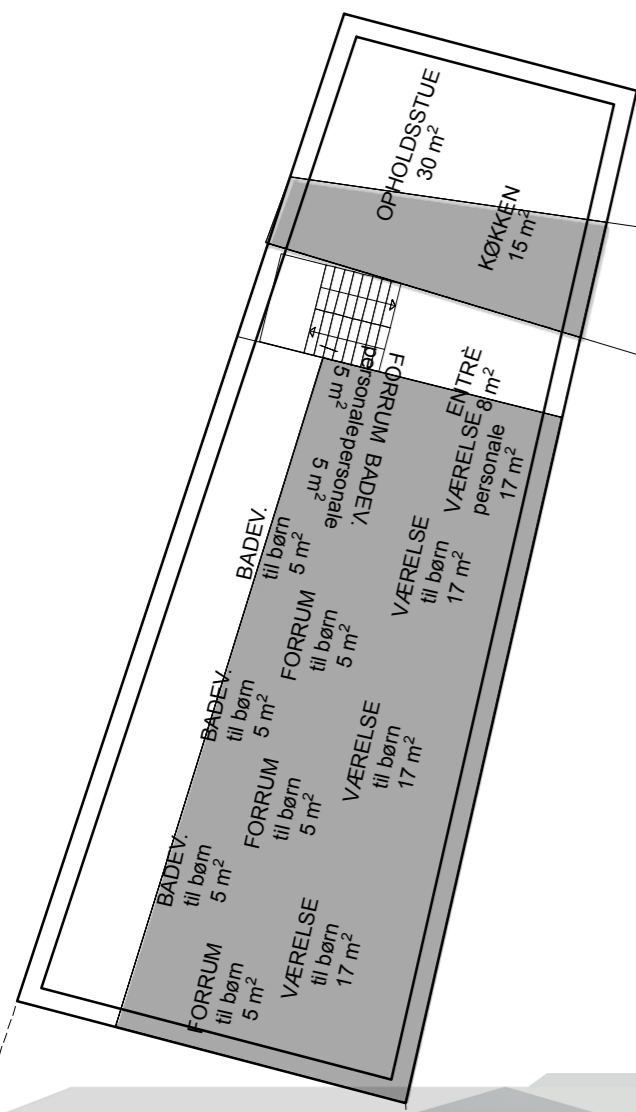
Program: Nursery

Size: 1.400 sqm

Status: Ongoing

Collaborators: Titarneq ApS

Location: Kullorsuaq, Greenland



KULLORSUAQ

Case: P121
 Type: Commision
 Program: Nursery
 Size: 1.400 sqm
 Status: Ongoing
 Collaborators: Titarneq ApS
 Location: Kullorsuaq, Greenland



GARTNERIGRUNDEN

Case: P094

Type: Commision

Program: Housing

Size: 4.100 sqm

Status: Expected finished in 2022

Collaborators: Orbicon Arctic A/S

Location: Nuuk, Greenland



GARTNERIGRUNDEN

Case: P094

Type: Commision

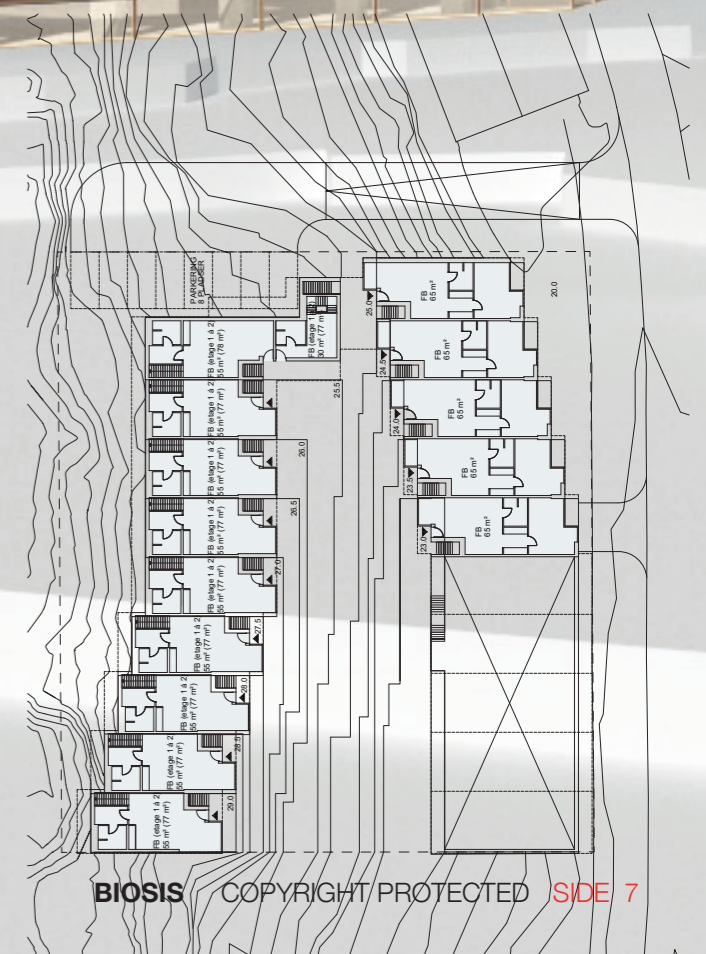
Program: Housing

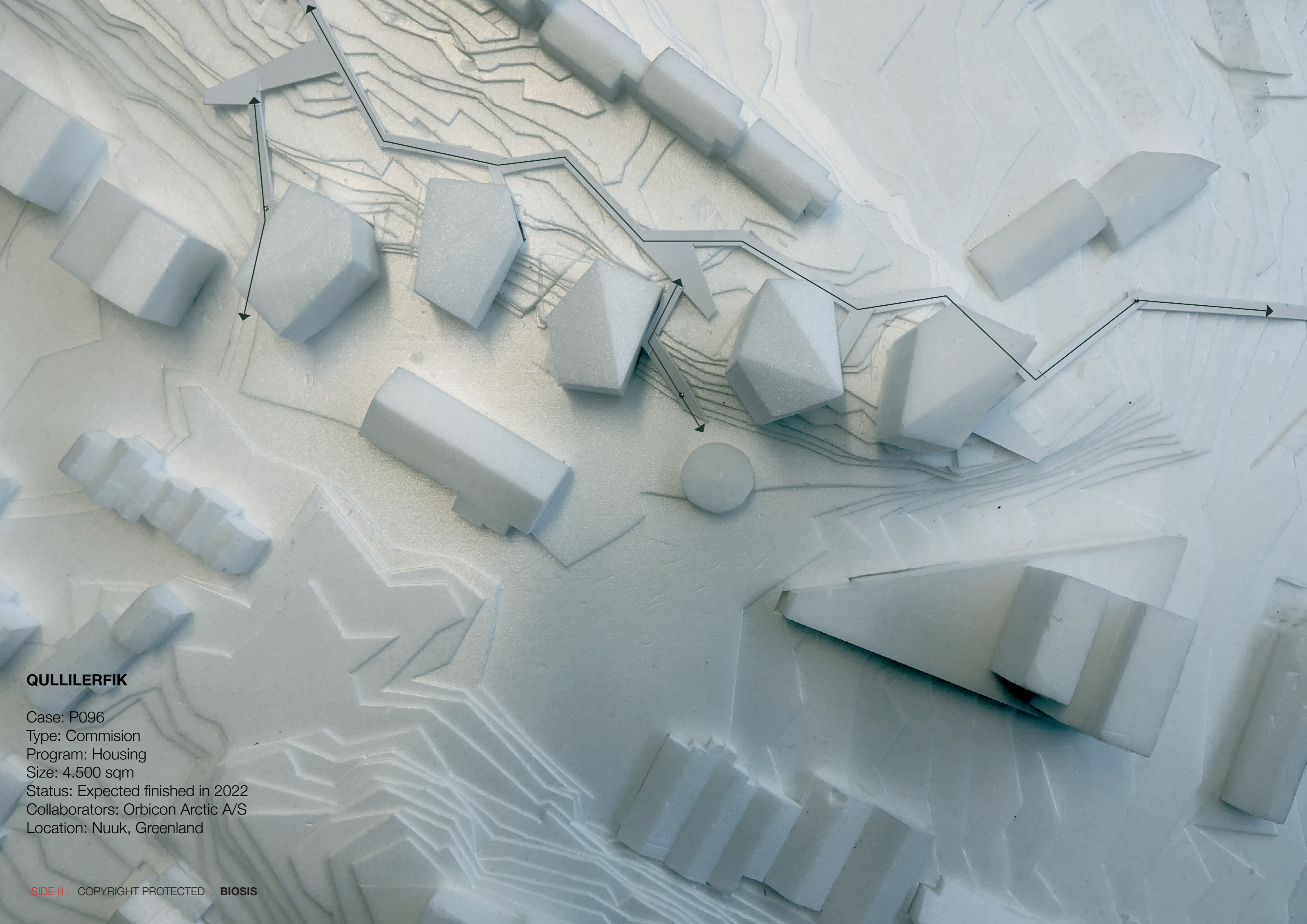
Size: 4.100 sqm

Status: Expected finished in 2022

Collaborators: Orbicon Arctic A/S

Location: Nuuk, Greenland





QULLILERFIK

Case: P096

Type: Commision

Program: Housing

Size: 4.500 sqm

Status: Expected finished in 2022

Collaborators: Orbicon Arctic A/S

Location: Nuuk, Greenland



QULLILERFIK

Case: P096
Type: Commision
Program: Housing
Size: 4.500 sqm
Status: Under Construction, finished 2022
Collaborators: Orbicon Arctic A/S
Location: Nuuk, Greenland

BIOSISTM

Sundkaj 125, 2150 Nordhavn
Copenhagen, Denmark
www.biosis.dk