

## SELECTED PROJECTS 2024

RSL  
Rebediani Scaccabarozzi Landscapes  
Via Marco Aurelio 21, Milan ITALY  
[rscapes.it](http://rscapes.it)

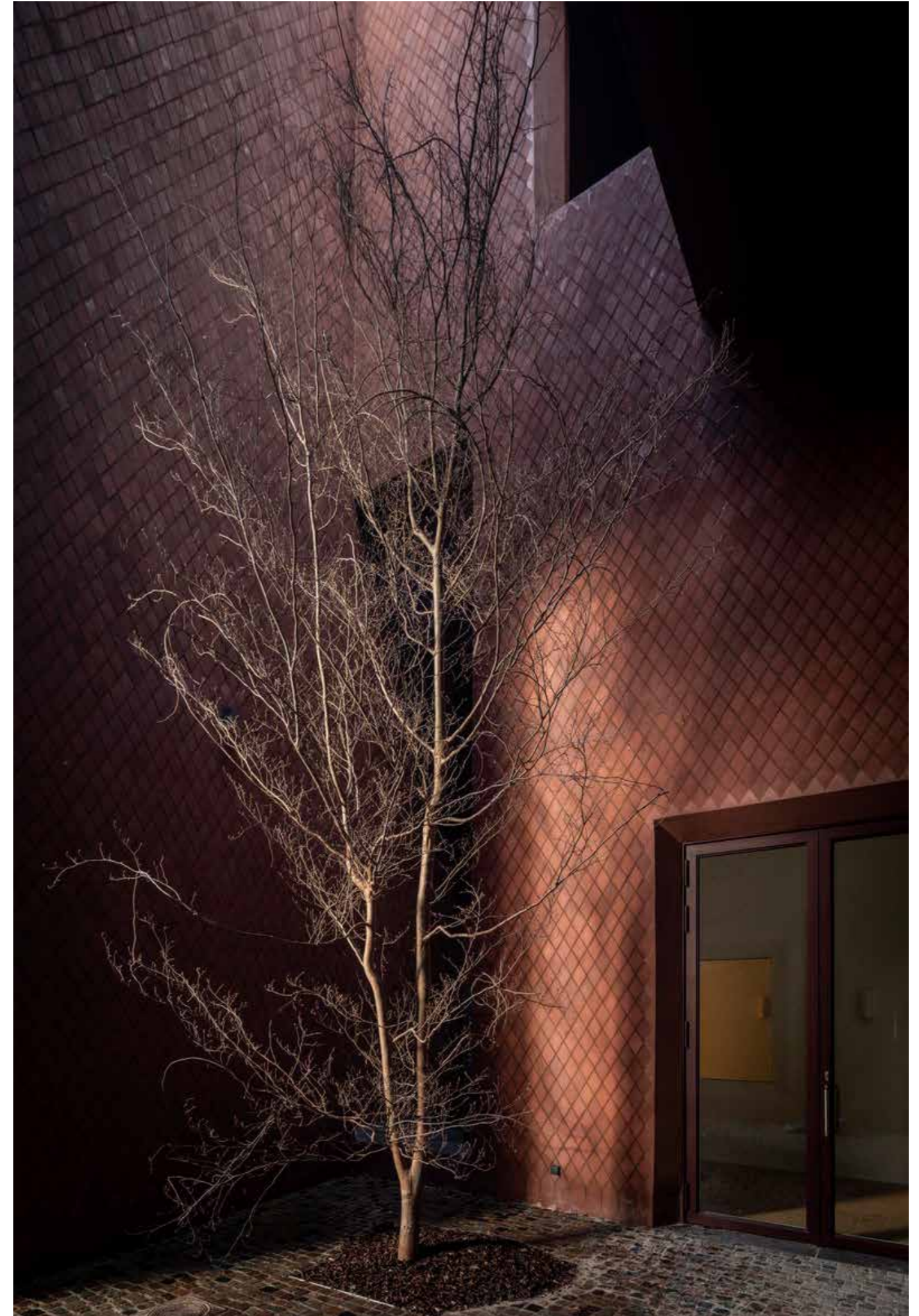
RSL is a landscape architecture practice founded by Lorenzo Rebediani and Vera Scaccabarozzi in Milan in 2018. The studio works on the complex entanglement of the processes that define a landscape. Their gardens aim to be living systems capable of growing and evolving with the people who live with them.

Their projects range from private gardens, community environments, experimental cultural projects, to museum landscapes. Recent projects include the gardens of Z33 House for Contemporary art, Design and Architecture in Hasselt (Belgium), Fondazione Sandretto Landscape for Art in Guarene (Italy), Cloud Seven - Frédéric de Goldsmith Collection, Brussels (Belgium). They are lecturer at Politecnico di Milano, Accademia di Architettura di Mendrisio, Technical University of Munich, Triennale di Milano amongst others.

## Z33 House for Contemporary Art Gardens

The new wing of Z33 contains four open rooms that are in dialogue with the sky. These rooms are indoor gardens. The building's programme is characterised by temporary exhibitions and public spaces that define a rhythm for visitors. This same rhythm also determines the choice of plants, modulated to offer ever-changing scenarios. It is important to link the frequency of visitors with the life cycle of the plants in order to create an empathetic relationship with the gardens. Visit after visit, one can fall in love with a scent, a wild complexion or a leaf with bold architecture. One can also miss the freshness of a flower that will not return until next year. To design this scenario, we considered each plant as a process instead of an object and wove these flows into iridescent gardens. The recurring plants in all the gardens come together highlighting the spatial qualities of each, creating an organism 'in varietate concordia' (defined by its variety). The gardens are all related, but each with its own personality.

site: Hasselt (BE)  
year: 2019 - 2020  
client: Z33 House for Contemporary Art  
program: design of internal gardens  
architecture: Francesca Torzo Architetto (IT)  
extension: 4.664 m<sup>2</sup> + gardens 300 m<sup>2</sup>





The silent facade



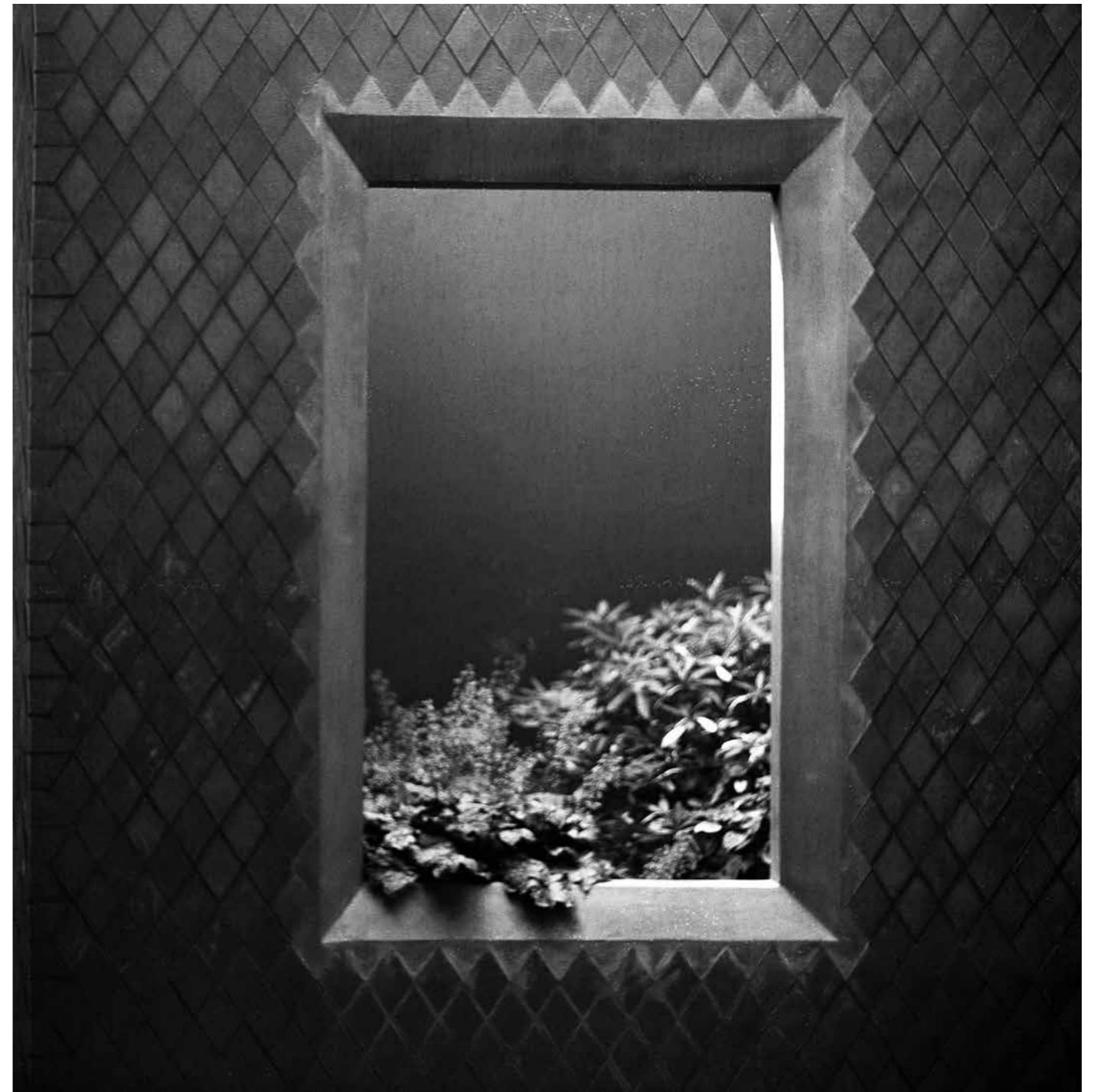
Exhibition spaces







Dak Terras



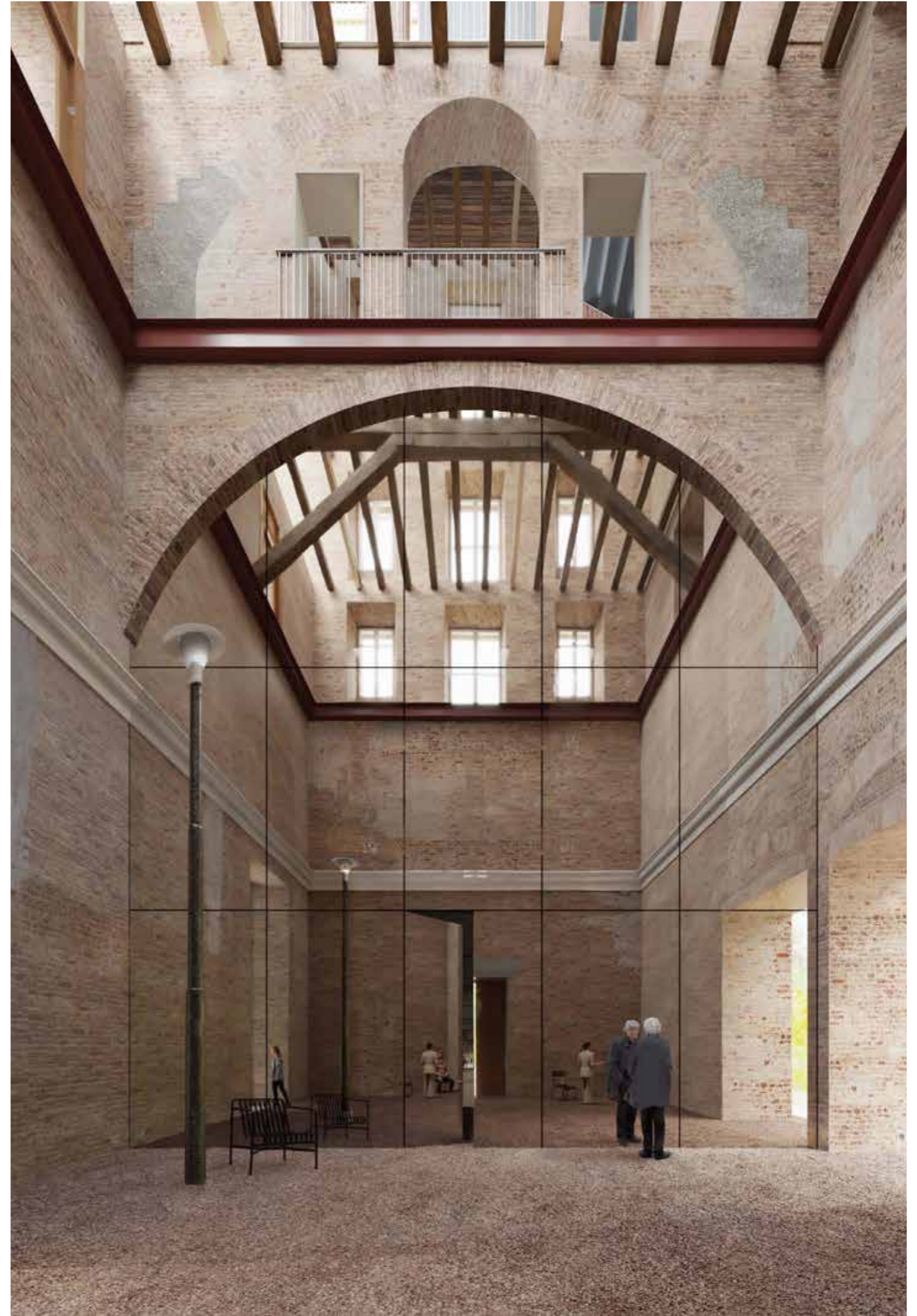
Hoge Tuin

## Cavallerizza Reale di Torino Competition, 4° prize

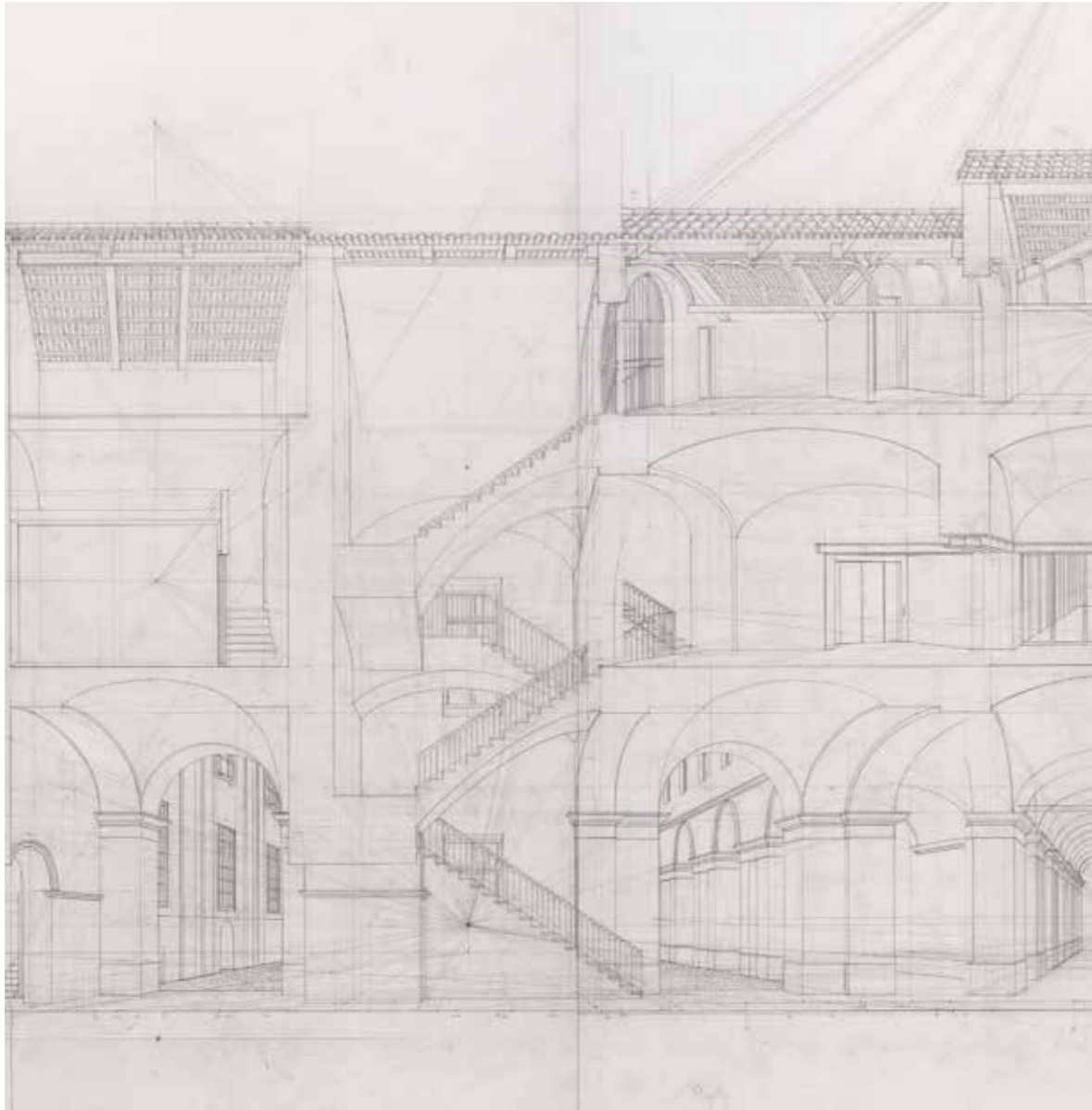
A profound feeling of respect has guided the approach to design, the Cavallerizza is a complex palimpsest of signs stratified over time, and therefore research has long focused on the legitimacy of each design action. The exercise adopted has been that of description, its instrument has been drawing. The investigation, carried out on the basis of numerous inspections and careful observation, has produced an abacus, understood not as an exhaustive copy of reality but as an operational tool for understanding the constituent materials of buildings, cities, and territories, i.e. the 'form of the elements, the quantity of these elements, the ways in which they are distributed in space with respect to one another, and the relative size of each' (Foucault, 1969). Understanding this system of signs and relationships was the key to allowing us to think about its remodelling. 'Surveying', 'seeing', 'investigating' in order to take care. 'I am monarch of all I survey, My right there is none to dispute.' In this memorable passage from Henry David Thoreau's Walden, Cowper is quoted about the relationship between man and landscape. This sentence sums up Thoreau's philosophy regarding property and desire. He believes that true satisfaction and fulfilment come not through property as possession, but through the property of the human being to be able to have access to the beauty that surrounds him. The project proposes itself as a restoration that can deliver to the citizenship renewed right and ability to enjoy an urban fragment; therefore, the project insists on the unveiling of the accumulation of its signs, at the same time it opens the Cavallerizza Reale to new scenarios of interaction for the communities.



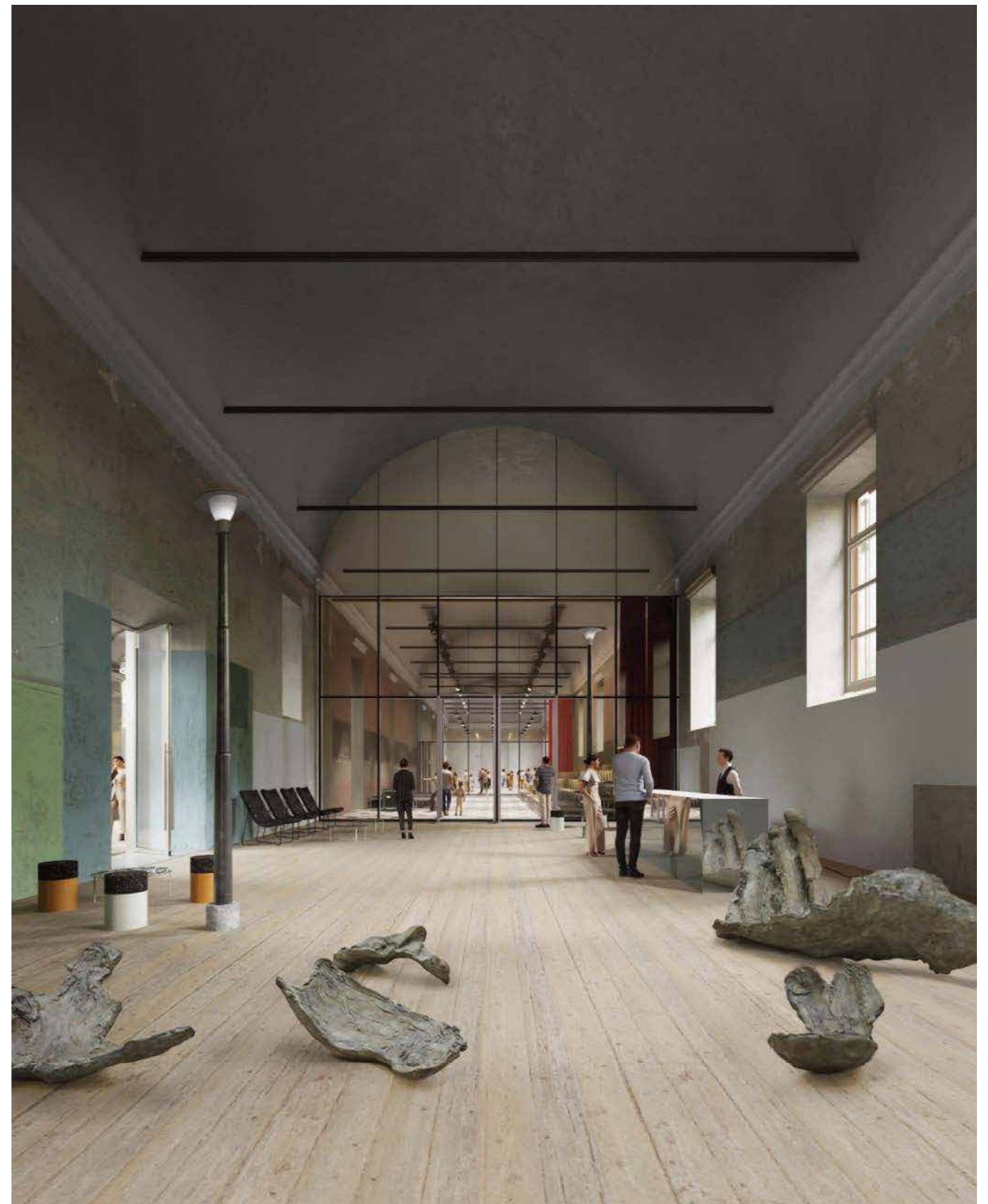
site: Torino (IT)  
year: 2023  
client: Compagnia di San Paolo  
program: Offices + public spaces  
architecture: JDVIV (BE), Oasi Architects (IT)











## B.E.I.C Competition

The new B.E.I.C. lies entirely within sub-area 1A. The plan is to allocate 50% of the sub-area to a new portion of the park and 50% to architecture. The union of these two halves constitutes the new B.E.I.C. Like the digital, the natural is therefore assumed from the beginning as one of the fundamental characteristics of the project, declined in different ways so as to combine aspects of closure and discretion with the principles of permeability and crossing. This strong dialectic between architecture and landscape, interior and exterior, results in a series of fundamental choices at the basis of the project.

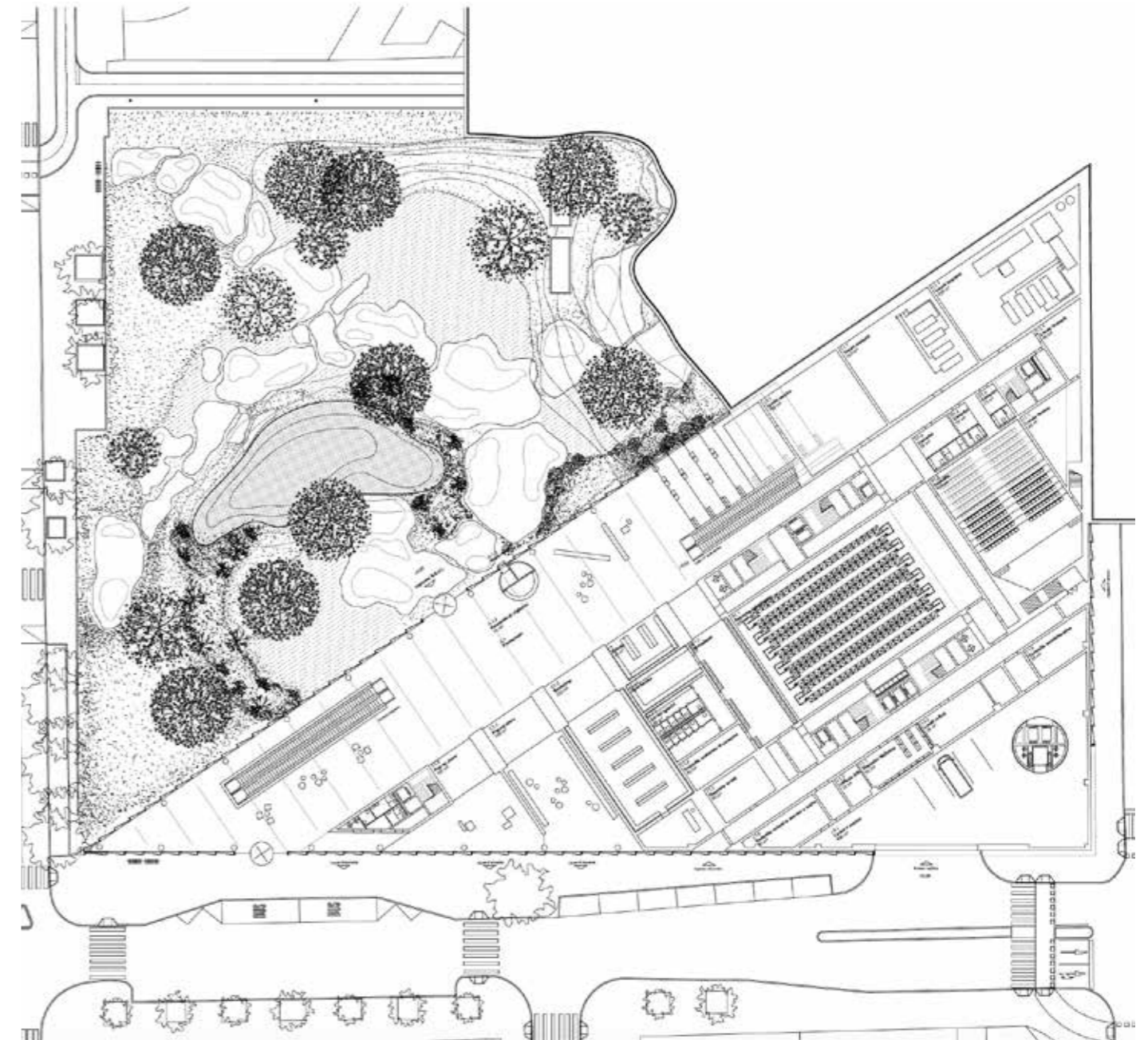
The definition on half of the area of a strongly naturalistic park where strictly linear routes are precluded, imposing the crossing of large renaturalised areas, which connect the city and the library, while at the same time creating a sense of quiet detachment.

The definition of a large public atrium - Promenade - that develops along the diagonal front of the building in total continuity with the park and accommodates the more public functions of the functional programme, including a new access to the Passante Ferroviario.

The definition of a large green patio at high altitude, intended for the Imaginarium space, capable of transporting an unexpected yet controlled and safe fragment of nature into the building, which can also be used for educational purposes.

In order to intensify the relationship to the maximum, architecture and landscape are taken to their mutual extremes in the design for the new B.E.I.C. If the architecture is abstract, geometric, technological, the landscape that complements it is deliberately organic, informal, spontaneous. The confrontation - sometimes even the clash - between these two worlds constitutes the DNA of the project for the new B.E.I.C.

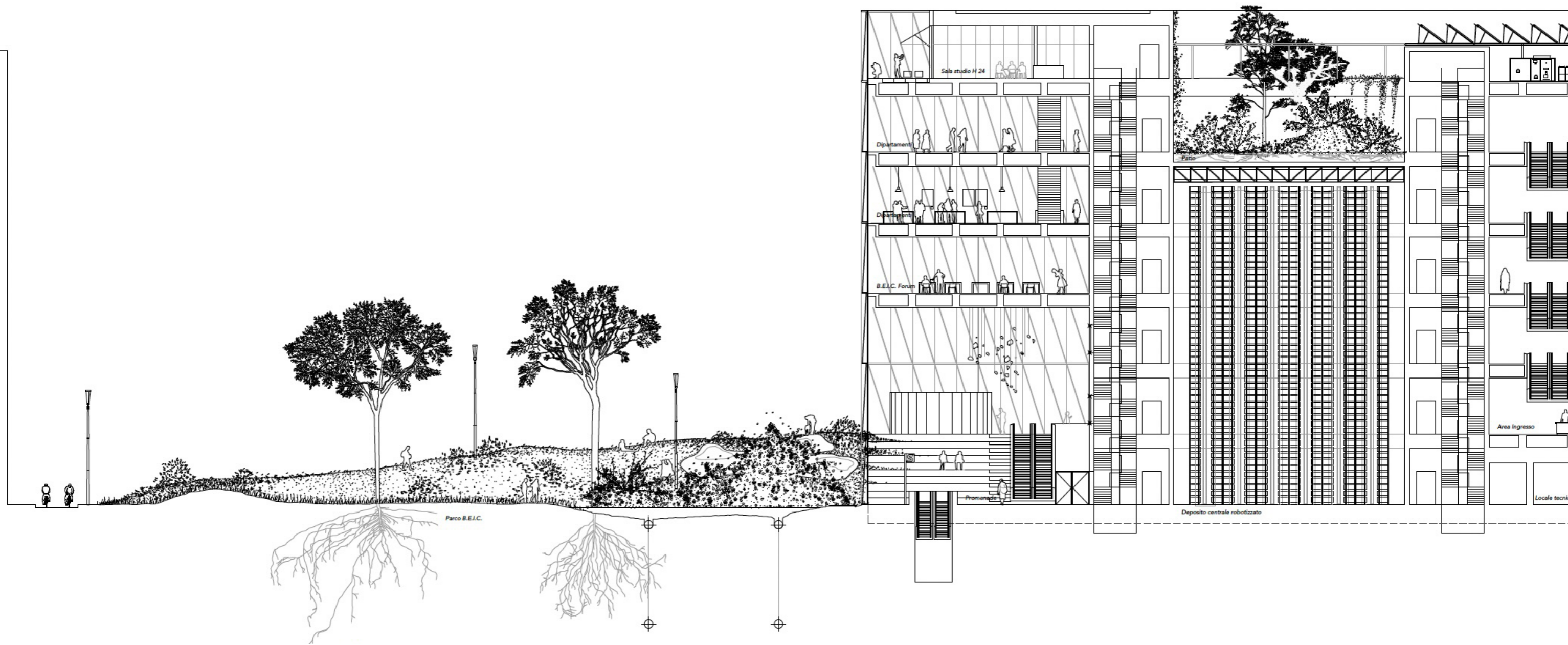
site: Milano (IT)  
year: 2022  
client: Comune di Milano  
program: Library + park  
architecture: Ganko (IT)



Groundfloor plan







## Bahrein Pavillion Osaka 2025 Expo Competition

The archipelago of Bahrain embodies the relationship with the sea and the idea of the journey. The dhow boat as a vessel of this tradition is to be Bahrain's ambassador during Osaka Expo 2025, and the Bahrain Pavilion is to be its shelter. The project is a generous public space, a platform for Bahraini culture with its traditions and innovations at a time when we are all heading together towards an unknown future, enlightened by the promise of the circular economy. The design envisages a light and open structure as an enclosure for a dhow boat and other artefacts. The structure is fully recyclable as its main structural components are standard off-the-shelf rental truss systems. Our team is interested to investigate the possibilities of standard prefabricated structures to create a specific and beautiful form. The space is an atmospheric realm, the womb of a sea creature, the hull of a boat, the hangar of a ship, mysterious and generous at the same time.

### PLANTS, LIKE PEOPLE, MOVE WITH THE WIND

The Bahrain Tree of Life (Shajarat-al-Hayat) has been growing solitary in the desert for over 400 years, where no other tree survives. Its taproots have found the remains of an old village and a well, and this is how the tree of a species native to Mexico - *Prosopis cineraria* - has established itself in a faraway land until it has become part of the nation's identity.

But how did a Mexican tree come to Bahrain?

The tree was most likely brought by the Portuguese, who after exploring the Americas occupied the islands in 1521 and remained there until 1602. Just as the identity of a people is constantly evolving and is the result of a complex network of cultural exchanges, the pioneer plants of today are often nothing more than the natives of tomorrow.

They, like people, move with the wind.

The wind moves ships just as it moves plant seeds. The track of these voyages describes movements that do not depend on terrestrial topographies, but on an equally complex topography of the sea, determined by winds, currents, shoals, swells. Bahrain, a people of traders and experienced seafarers, has historically been at the centre of these exchanges.

The Bahrain pavilion is a hangar into which ships brought seeds, cuttings, fruits from all over the world and which grew there together in an unexpected, exuberant garden, emerging between the recesses of the architecture. It is a tribute to plants which, either because of their great importance for human economies and needs - think of the date palm - or because of their great adaptability to extreme situations, as is the case with the Bahrain Tree of Life, or because of pure cosmopolitanism, have travelled from one part of the world to another and have in some way connected cultural imaginaries, identities, economies, and artisan production.

site: Osaka (JP)

year: 2023

client: Kingdom of Bahrain

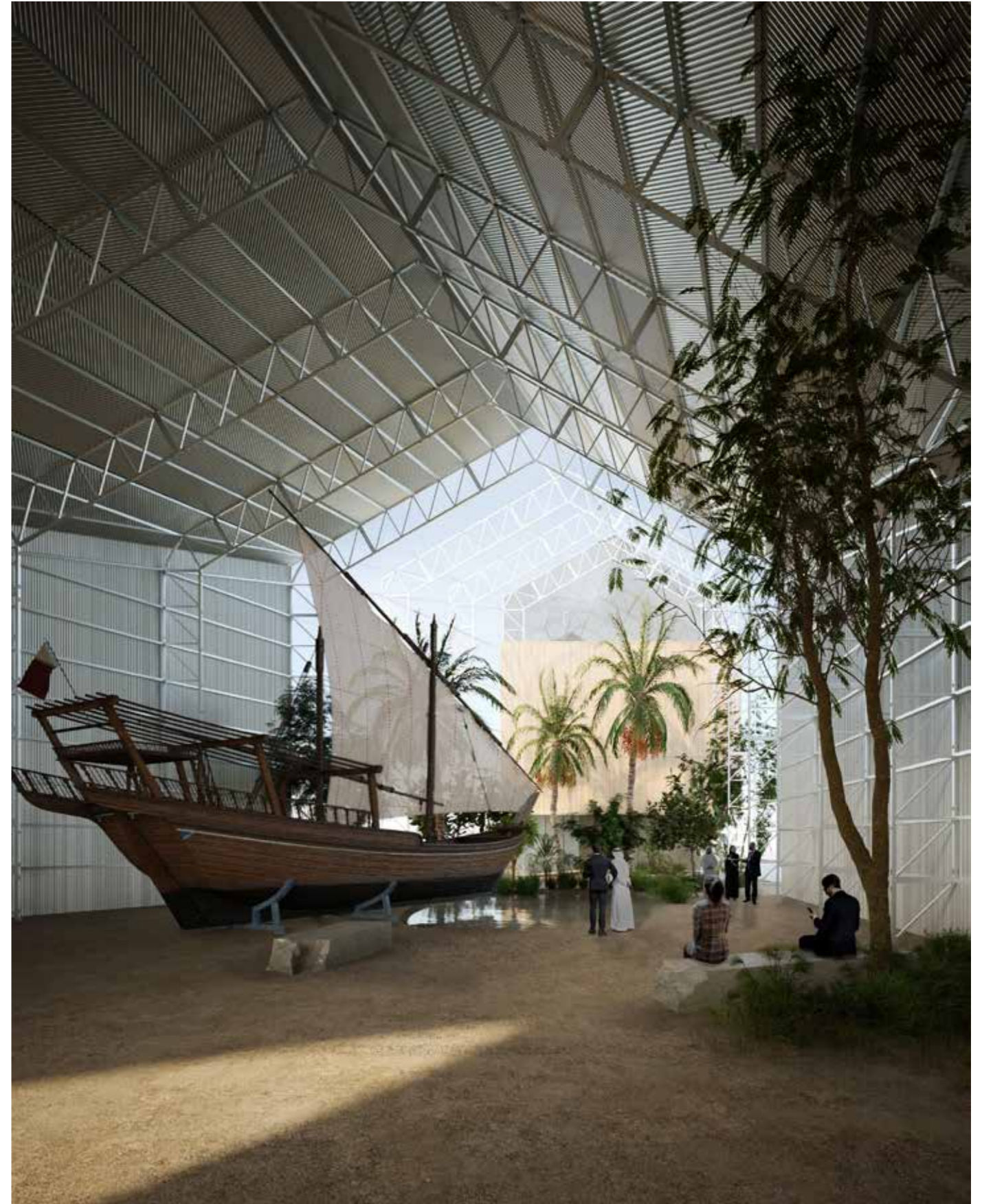
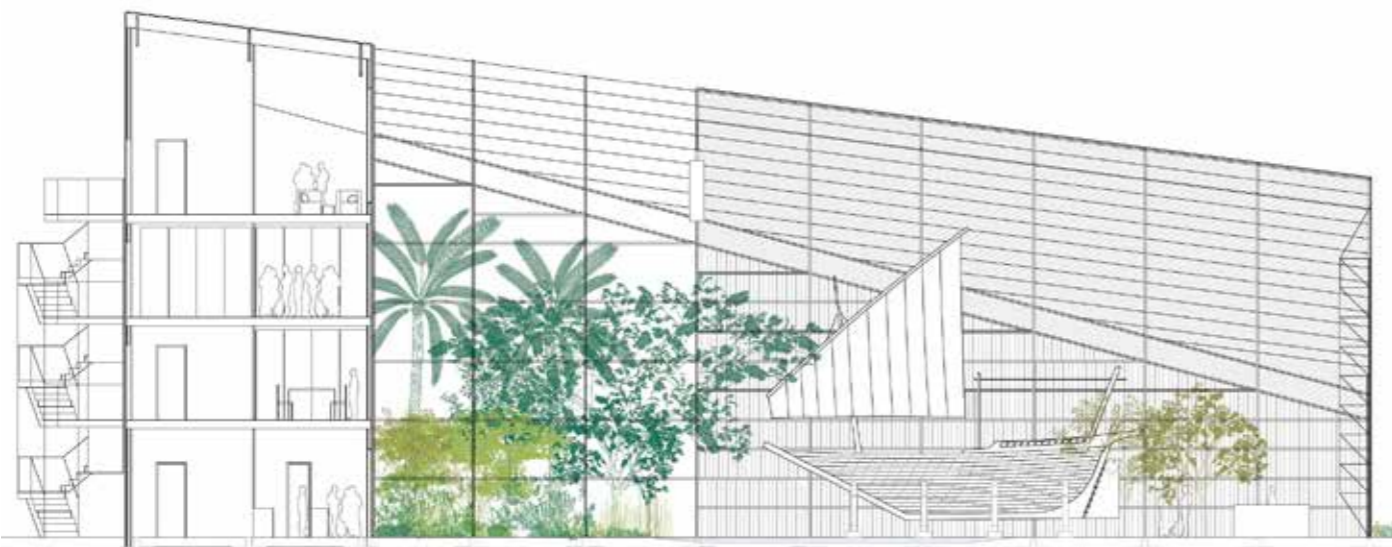
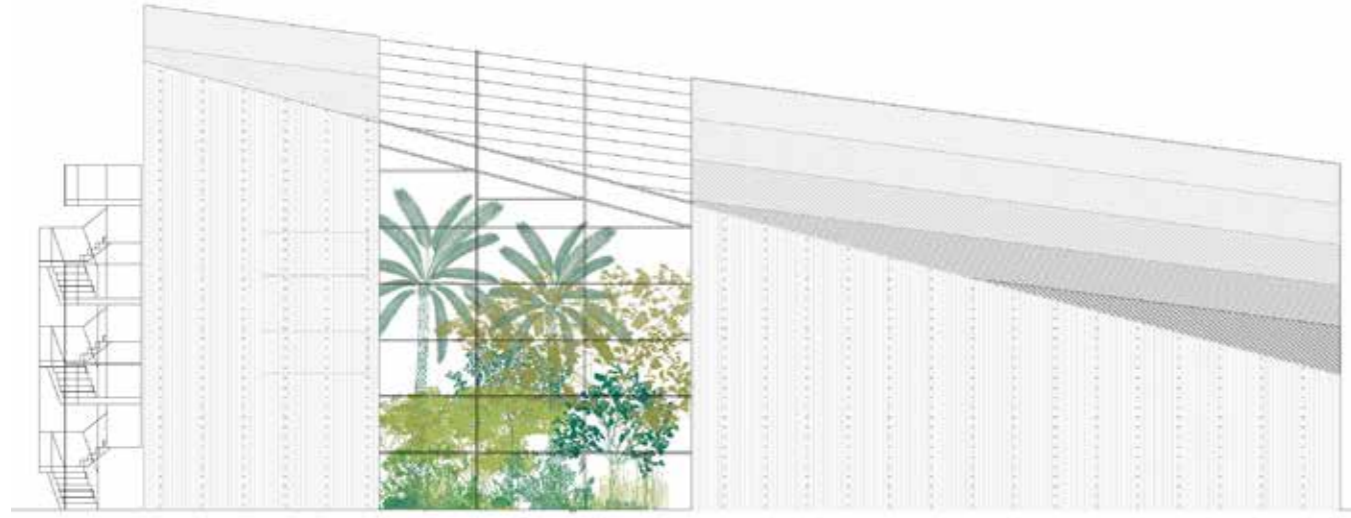
program: Expo pavillion and gardens

architecture: Christ & Gantembein

structure: Conzett Bronzini





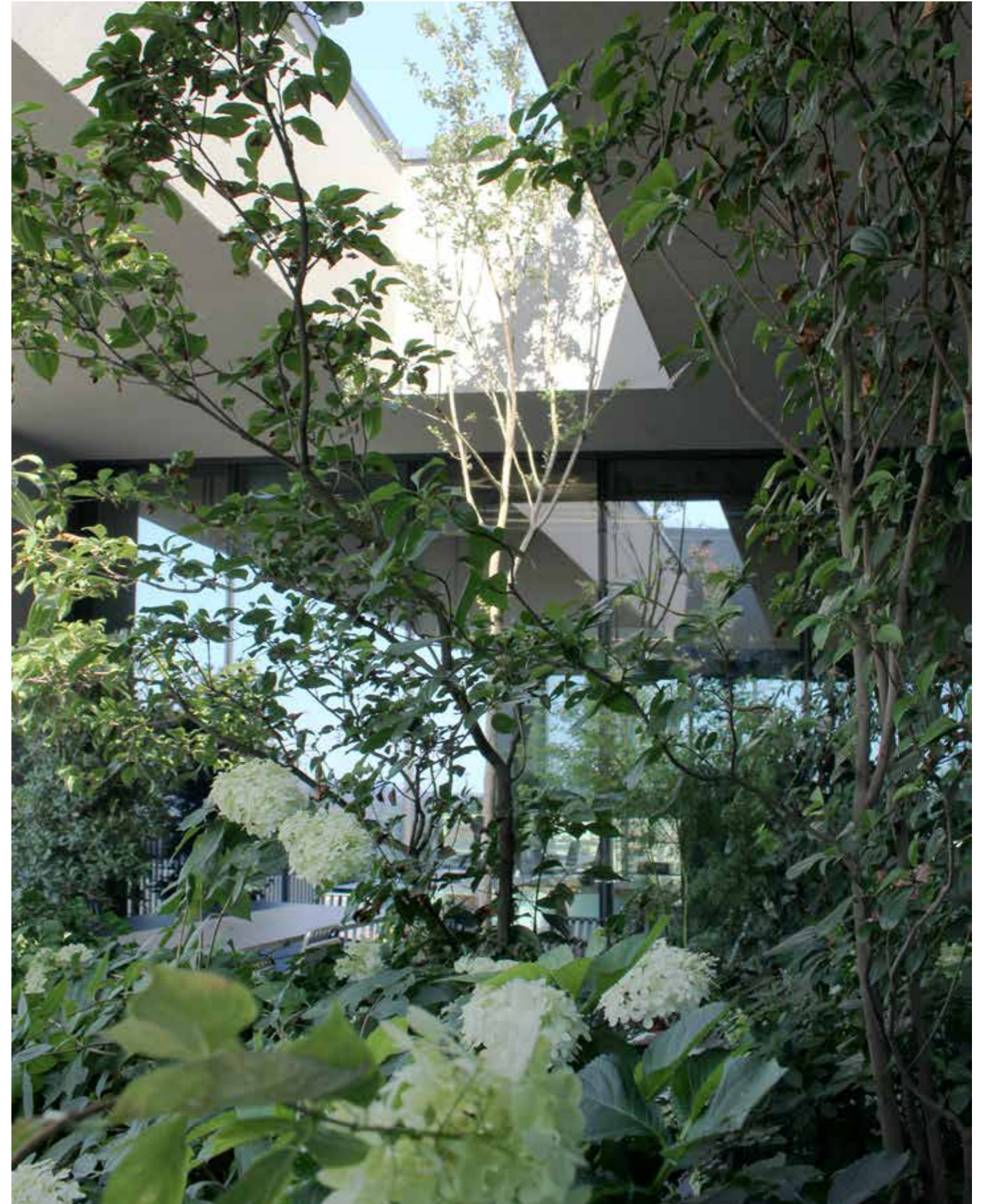


## Loggia Orsero

*Of the coolness. I make my home, and here I rest.*  
Matsuo Basho

A cool, shady space vibrant with greenery. A lush lantern visible from the offices to host breaks or work and outdoor meetings in a cool, invigorating atmosphere. We select shade-friendly plants such as ferns and subtropicals to create an elegant and understated symphony of greenery.

site: Milano (IT)  
year: 2023  
client: Orsero s.p.a  
program: Office terrace  
architecture: ACPV Architects (IT)  
interior: Studio WOK (IT)



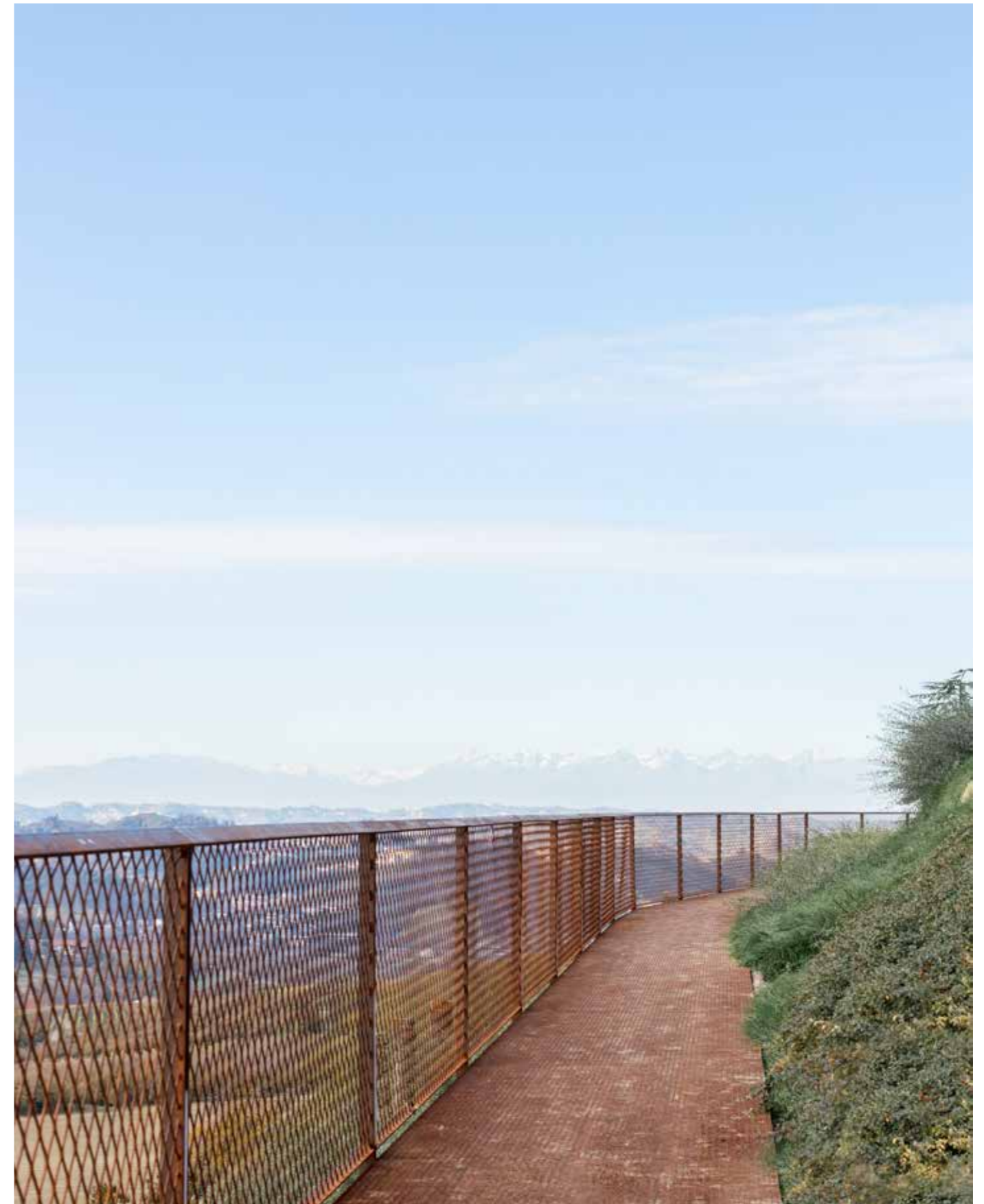


## Fondazione Sandretto Re Rebaudengo Art Park

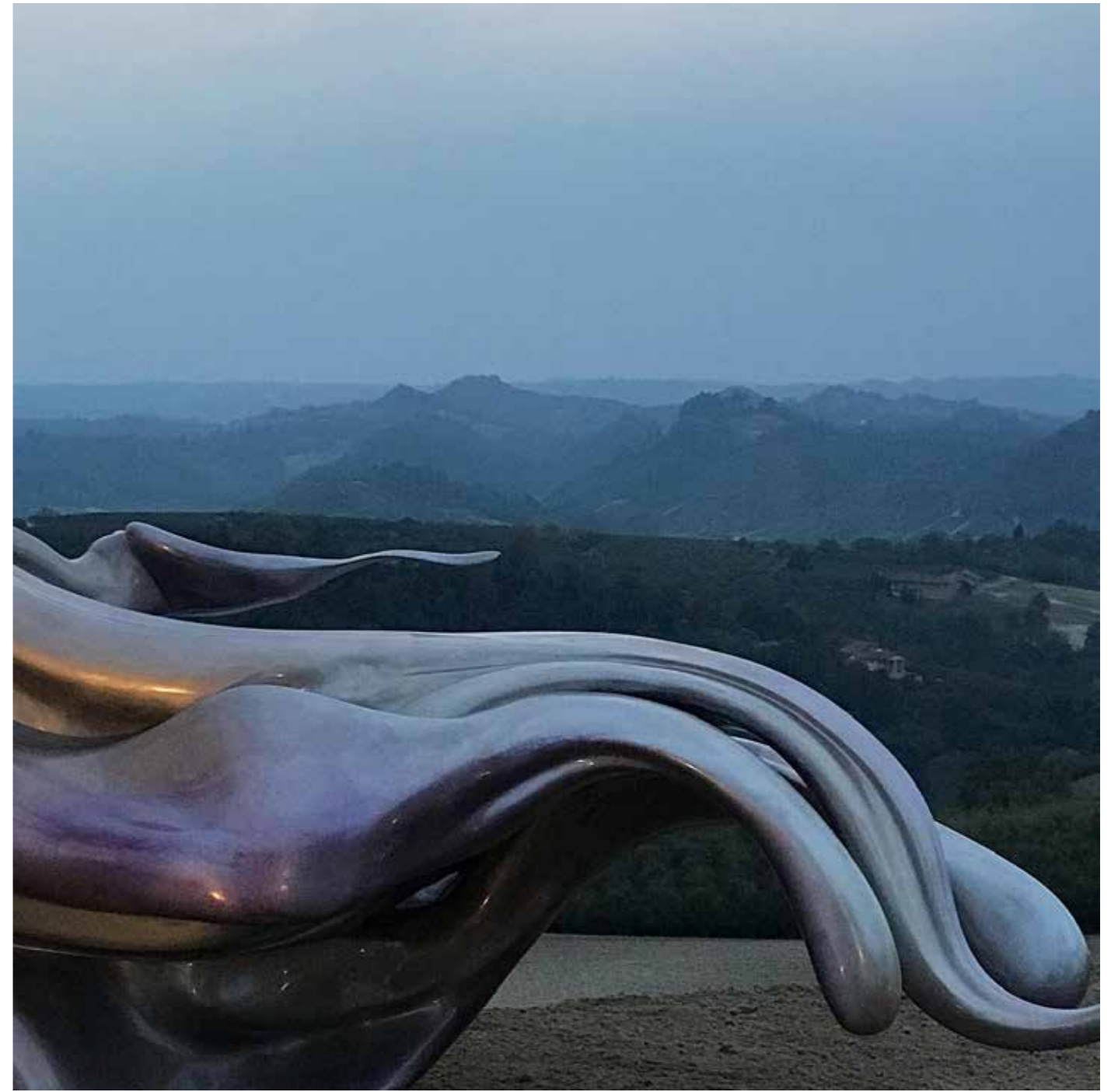
Landscape is a mosaic of interconnected tiles. We search in this mosaic for both the law and the anomaly in order to develop a language to design the Colle San Licerio Art Park. We design our tile in a 'verisimilitude' way: one that has the appearance of truth, but is not true. For Plato, the verisimilar lies between the true and the false; for Aristotle it is equivalent to 'probable' and is considered to be a character proper to poetry, which describes things not as they happen, but as they might happen. A pattern of willows consolidating the barren hillside is an echo of the patterns of vine cultivation. A verisimilitude landscape that leaves room for doubt: "what am I really seeing?". A system of paths welcomes or crosses these fluid lines that show and hide a wonderful collection of sculptures.

*"The roots of the willows prevent the slope from crumbling and the branches of the willows that are arranged along the escarpments are pruned to become stronger every year. And so you become a living escarpment made of one piece".*  
Leonardo da Vinci

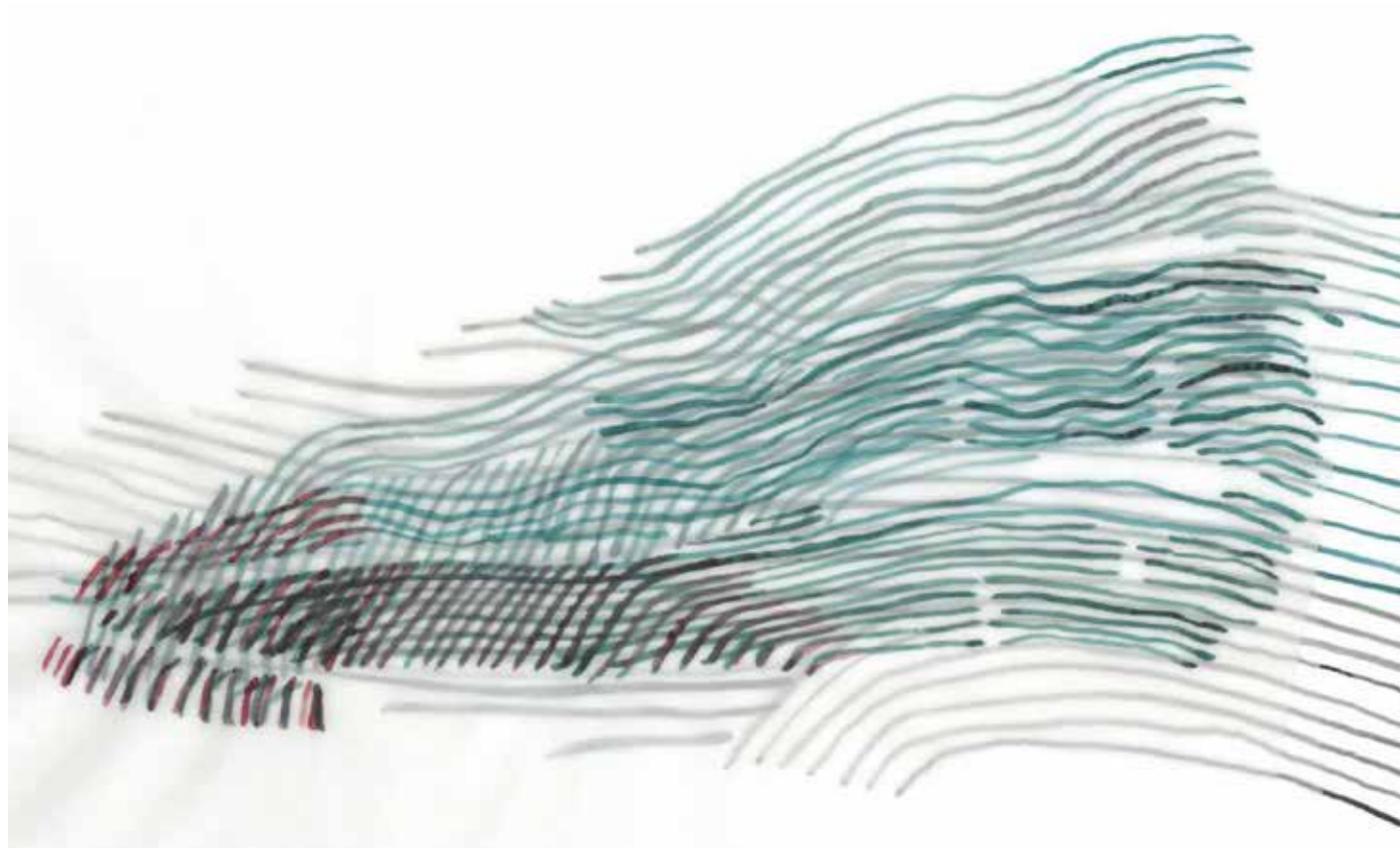
site: Guarene (IT)  
year: 2020 - 2021  
client: Fondazione Sandretto Re Rebaudengo  
program: art park  
extension: 8000 m2







Marguerite Humeau's site-specific sculpture 'Rise' in dialogue with the landscape



Study drawing of willow rows



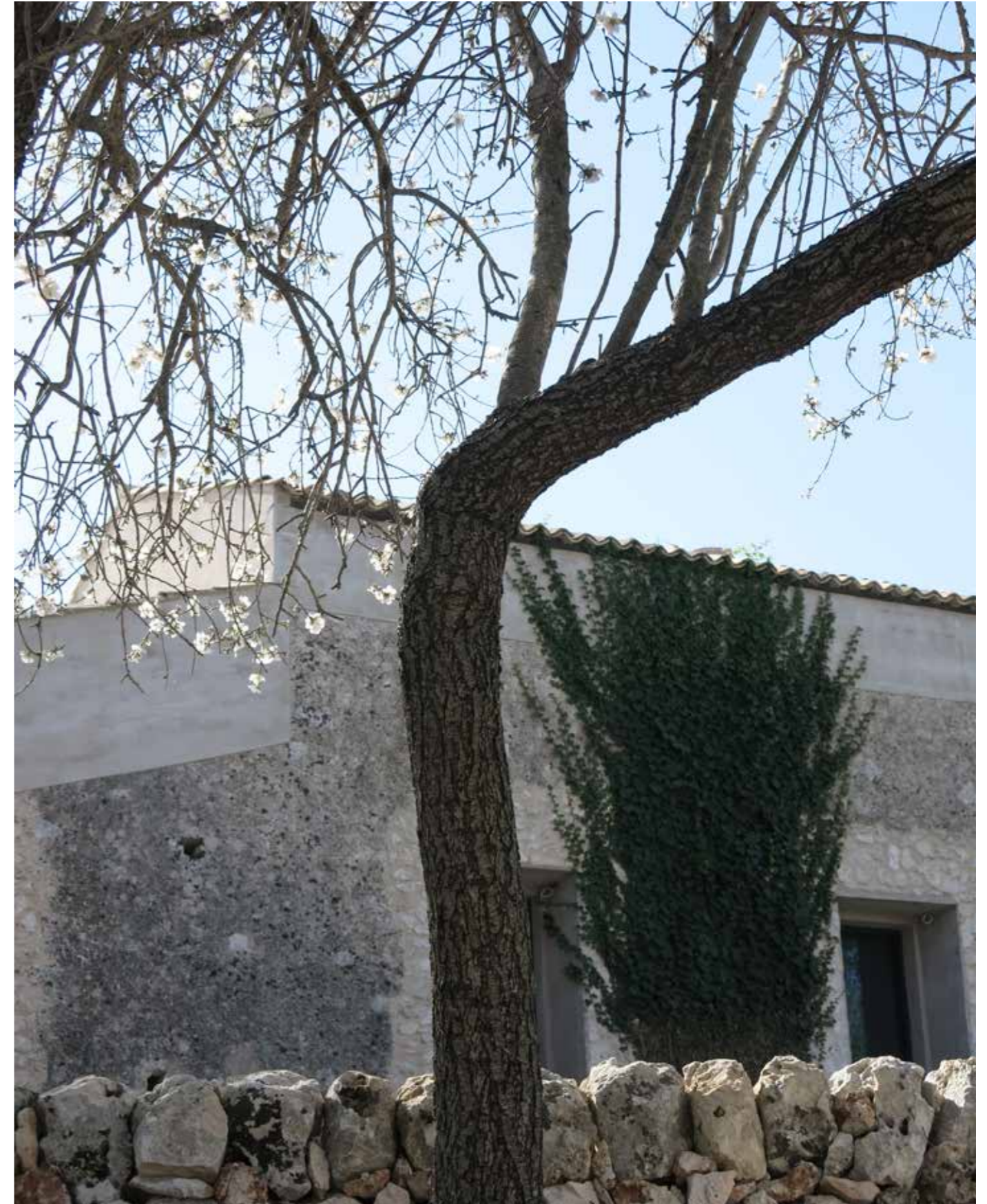
Maquette

## Gardens and productive landscapes along the Cassibile canyon, Sicily

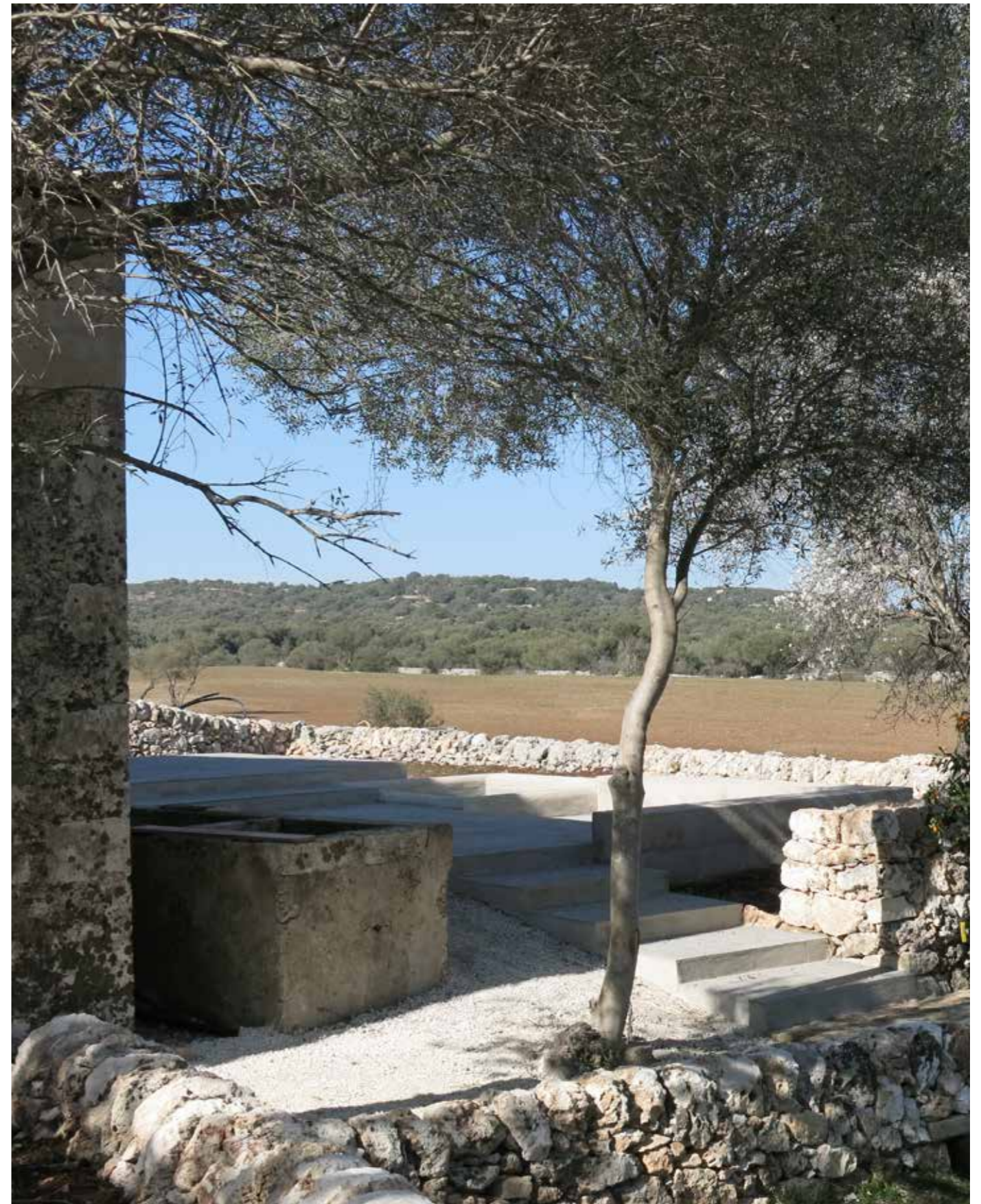
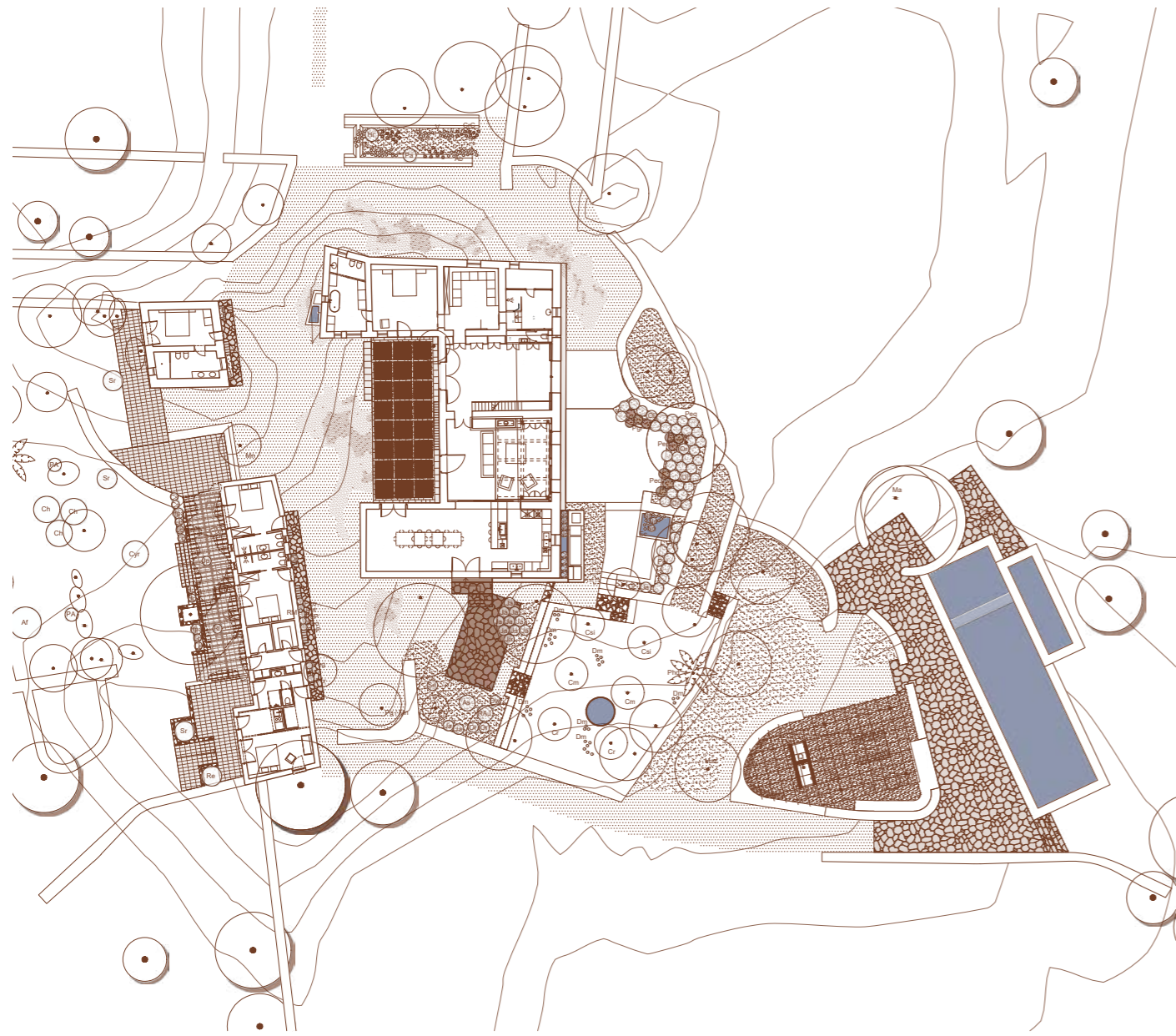
The borderless landscape of the hinterland between Syracuse and Noto is furrowed by a network of signs, stratigraphies and graves that have succeeded one another over a boundless period of time. The very deep furrows cut by the Cassibile River draw long gorges that outline the landscape and delimit the property. On the walls of these gorges, eroded over the millennia, are stratified the marks left by the peoples who have inhabited these territories and dug their own graves to bury their dead. Like so many bocchers, the burials dot the barren landscape speckled with white limestone. The presence of limestone is the skeleton of the entire landscape: the rocks emerge bare over large stretches and provide abundant material for the dry stone walls that define a dense mesh of limits and boundaries of fields, properties, roads and fences. The timeless, motionless, infinitely expansive landscape is punctuated by centuries-old olive and carob trees scattered across the arable land, static and always the same. Herds of cows and horses flow like clouds over the fields, like trees always the same as themselves. In the solitude of the bare countryside, the farmhouse stands out, with its fulcrum court around which, as if by budding, a dense system of walls and fences have 'grown', each with its own character, proportion, function and atmospheric quality.

Design vision: The garden will seem eternal and newly blossomed. The evergreen, sculptural, solid, imperturbable and silent structure of the Mediterranean trees and shrubs perfumed with oils will be the continuous symphony of constant greens. The flowers of the almond tree, nepetella, the tall spikes of bulbs, the fragile petals of cysts, the water of the large and small fountains will be the 'mobile' texture of the gardens. The different exposures and characters of the spaces will require a great variety of vegetation, from the more philological Mediterranean to the subtropical, to keep alive the temporal paradox of inhabiting the present, the past and the future together.

site: Noto (IT)  
year: 2022 - ongoing  
client: private  
program: gardens and public spaces along the canyon  
extension: 30 hectares  
architecture: Tom Cortvirend (BE)









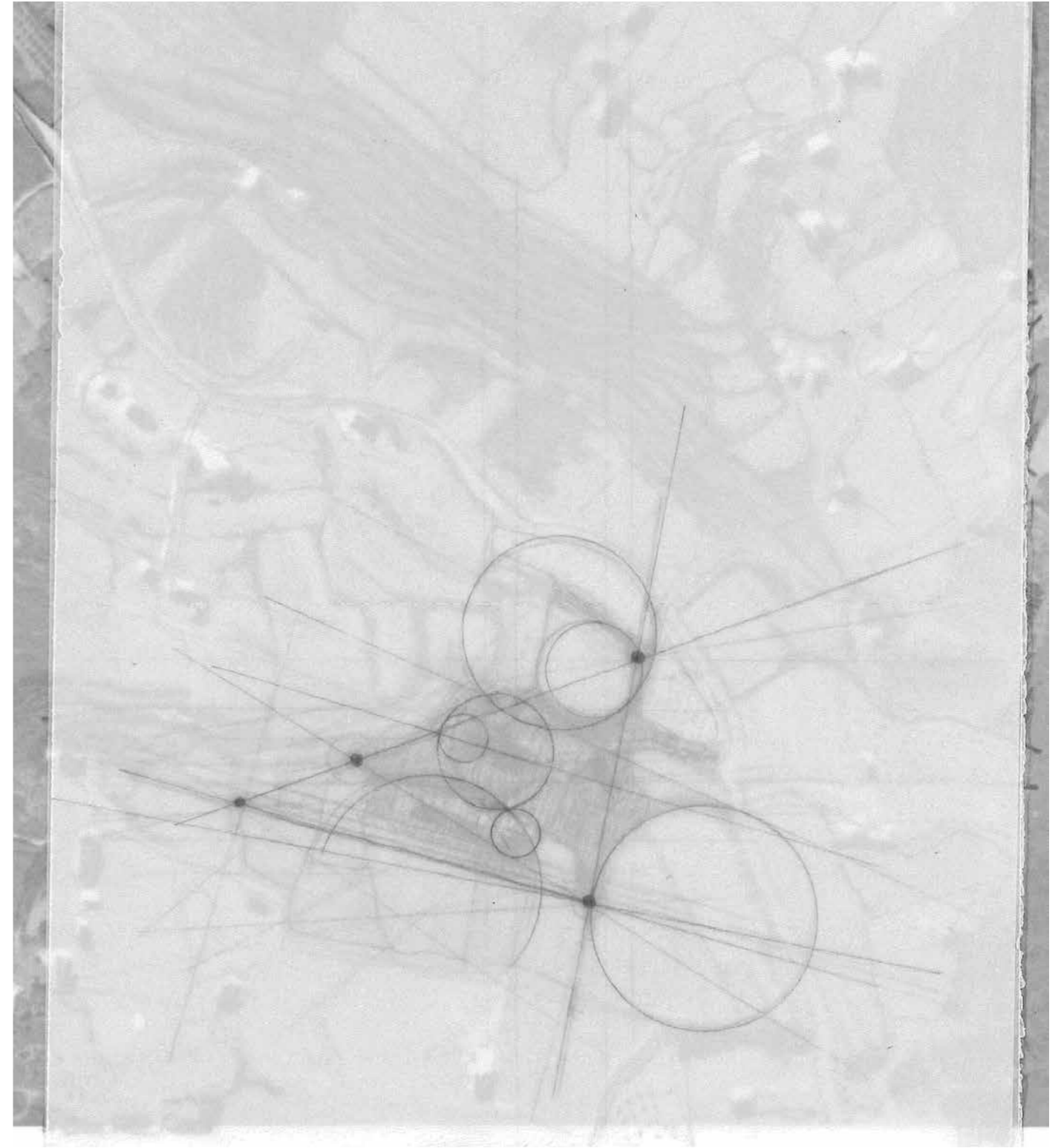
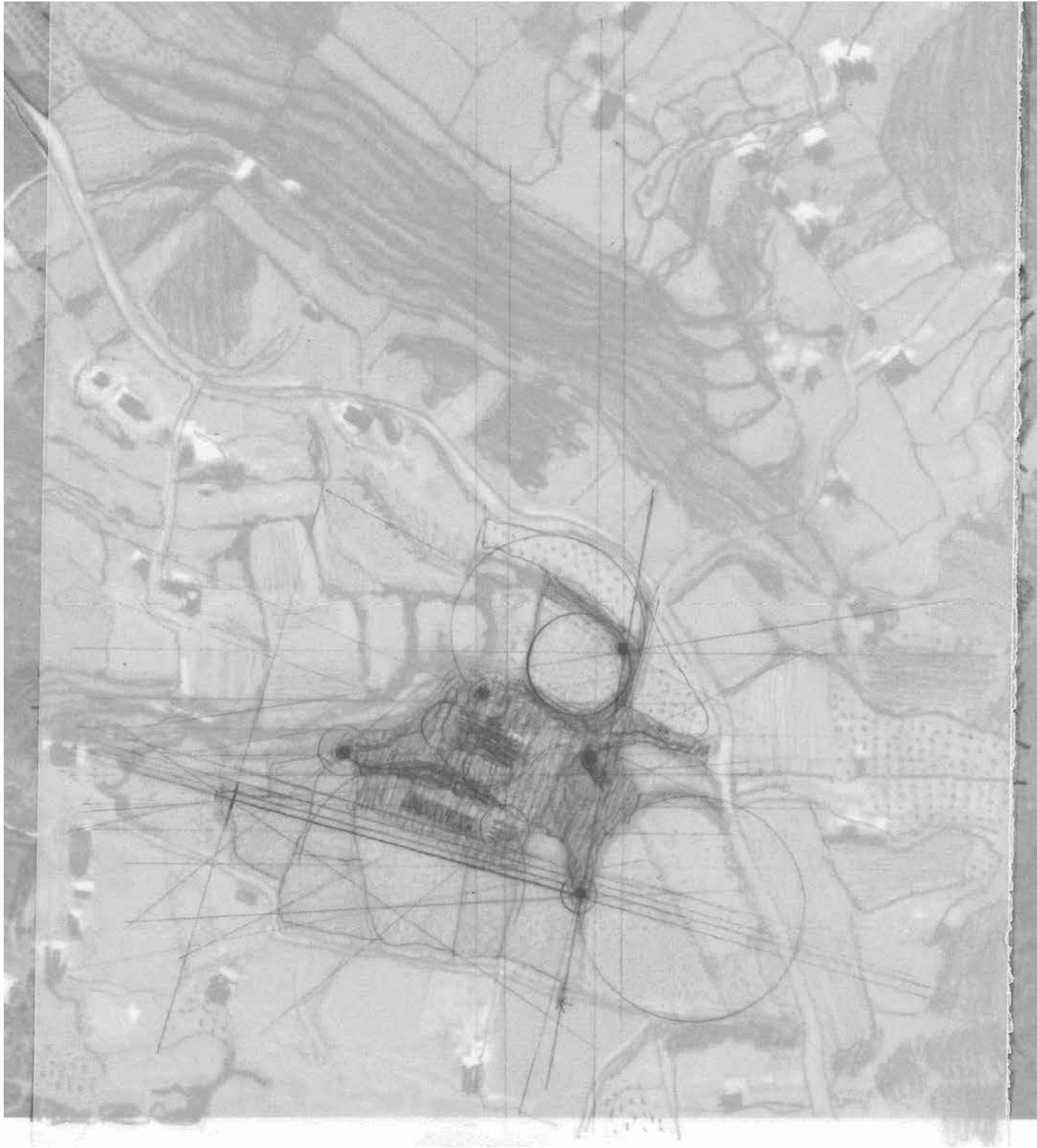


## Gardens and productive landscapes in Pantelleria

The designed landscape participates in its entirety in the system of signs and values of the island, within which it constitutes a moment of density that is propagated from the dwelling. The paths branch out into the landscape according to the magnetic attraction of the different lived places of the property. The gardens are polarities endowed with their own movement of centripetal rotation, generated by the presence of trees.



site: Pantelleria (IT)  
year: 2022 - ongoing  
client: private  
program: gardens, vineyard, orchard, olive grove and caper field  
architecture: ASA Studio (IT)  
extension: 4 hectares

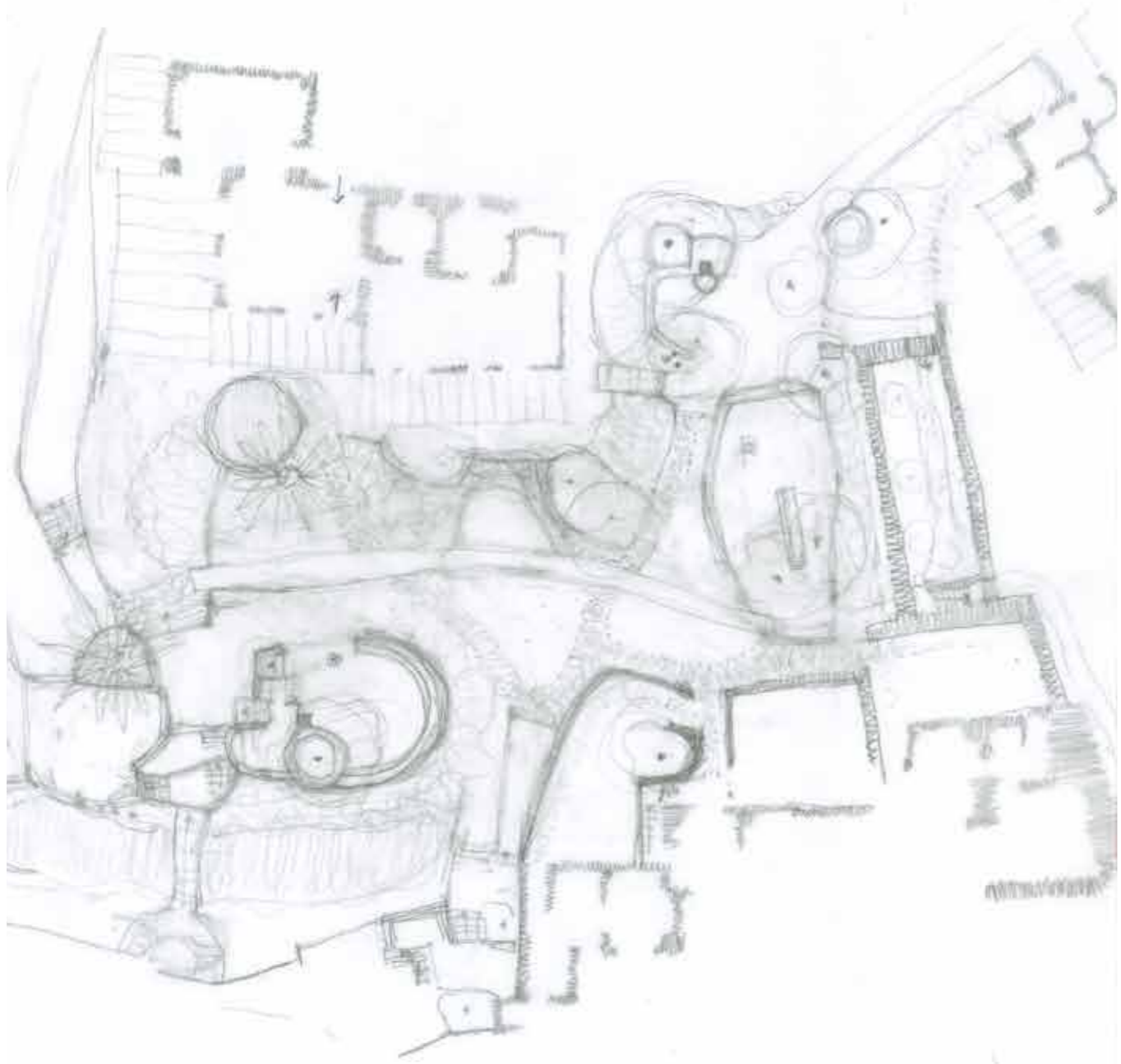












Consociazione arbusti ed erbacee  
di tipo D

*Ficus Carica*  
Fico

*Arbutus Unedo*  
Corbezzolo

Consociazione arbusti ed erbacee  
di tipo A

*Ficus elastica*  
Fico del caucciù

Consociazione arbusti ed erbacee  
di tipo D

*Phoenix dactylifera*  
Palma da datteri

Consociazione erbacee di tipo E

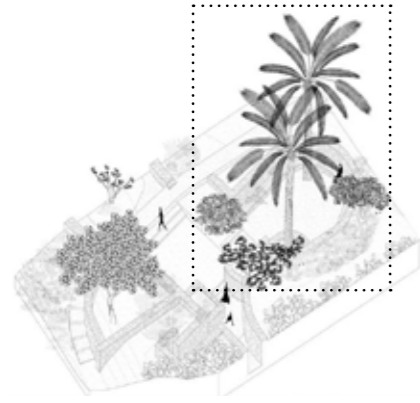
*Ceratonia siliqua*  
Carrubo

*Vitis vinifera*  
Vite

Consociazione arbusti ed erbacee  
di tipo D

Giardino pantesco

- ° pianta autoctona
- + pianta esotica
- Ω sempreverde



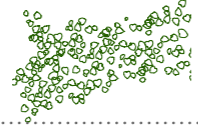
Alberi

*Ceratonia siliqua*, Carrubo  
° Ω

*Phoenix dactylifera*, Palma da dattero  
+ Ω

*Ceratonia siliqua*, Carrubo  
° Ω

*Phoenix dactylifera*, Palma da dattero  
+ Ω



Arbusti e rampicanti

*Arbutus unedo*, Corbezzolo  
° Ω

*Bouganvillea 'Pale Pink'*  
+ Ω

*Vitis vinifera*, Vite comune  
°

*Arbutus unedo*, Corbezzolo  
° Ω

*Bouganvillea 'Pale Pink'*, Bouganville  
+ Ω

*Vitis vinifera*, Vite comune  
°



Erbacee in consociazione di tipo E

*Capparis spinosa*, Capperò  
° Ω

*Gomphostigma virgatum*  
+ Ω

*Umbilicus rupestris*, Ombelico di Venere  
° Ω

*Aeonium arboreum* 'Zwartkop'  
Aeonium  
+ Ω

*Capparis spinosa*, Capperò  
° Ω

*Pelargonium citrosium*  
*Pelargonium odoratissimum*  
Pelargonio  
+ Ω

*Umbilicus rupestris*  
Ombelico di Venere  
° Ω

## Grand Hotel Villa Certosa Capri

### *The abode of suspended time*

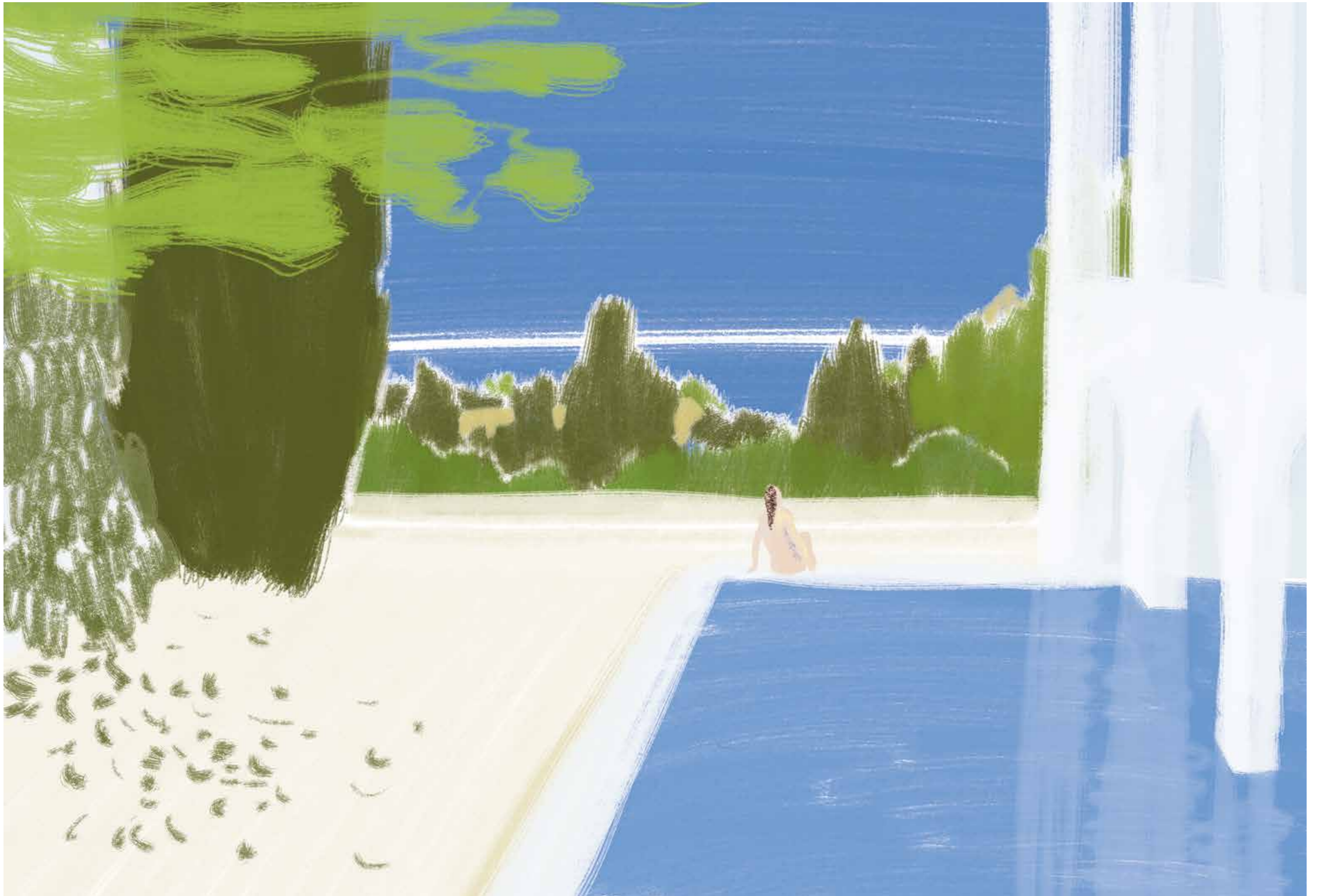
The garden will seem eternal and newly blossomed. The evergreen, sculptural and imperturbable structure of the Mediterranean trees and shrubs will be a continuous symphony of constant greens. The garden will seem motionless in appearance, an eternally blossoming oasis in silent dialogue with the gardens of the Carthusian monastery, its domes and cypresses.

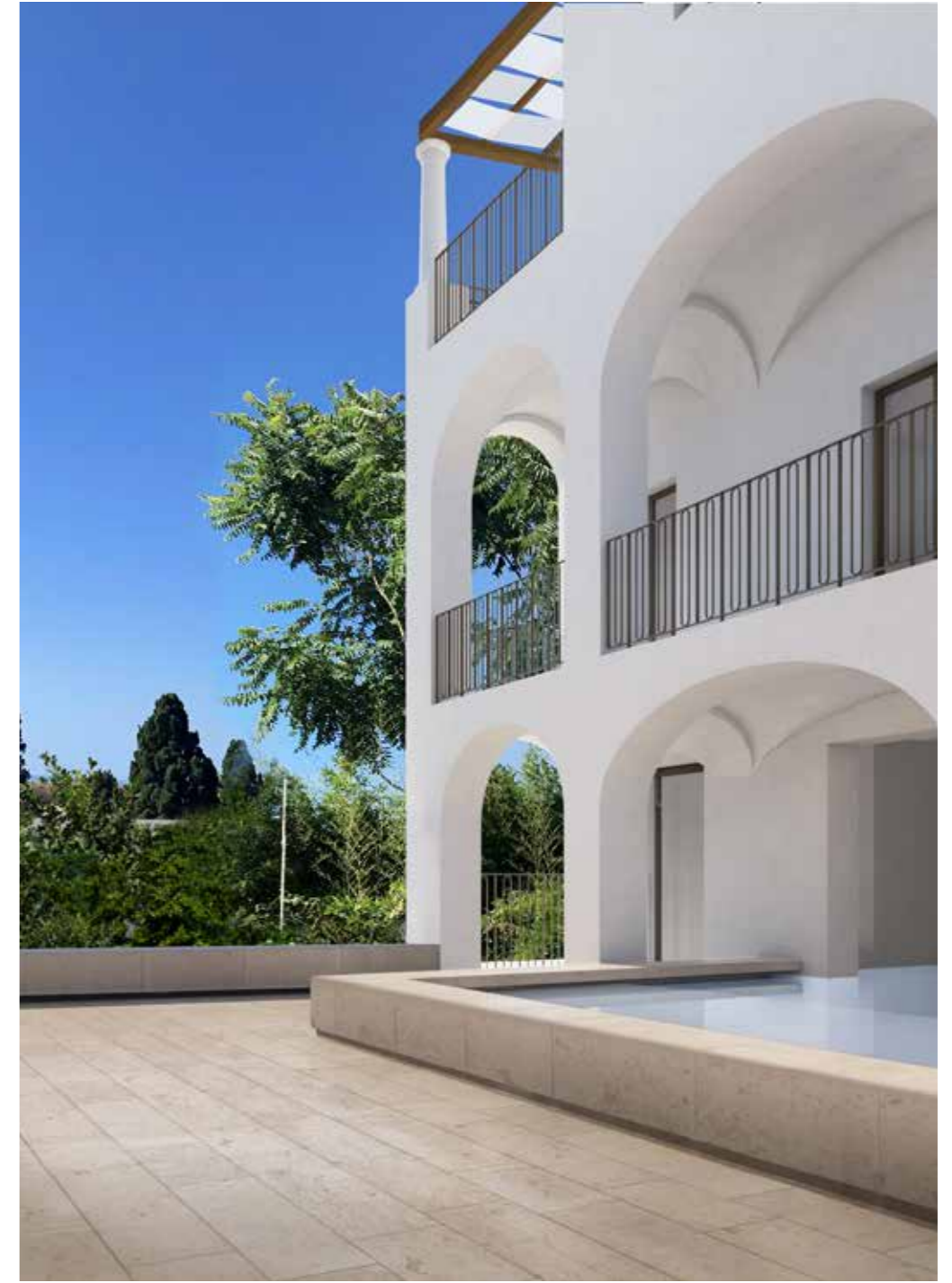
Imagine a space characterised by a temporal paradox of ancient youth, protecting guests from the intensity of the island. Vegetation is a means to dilute the passage of time through the use of constantly green or constantly flowering plants, in a continuum that suspends the garden in a timeless time. The plants soften the boundaries, select the views, work on the edges to enclose the hotel spaces in a place of heady, fragrant calm. It is a garden designed also for the return, which is why the sense of smell plays a central role in the experience. Scents are among the most enduring memories and are capable of binding other memories to themselves: a scent makes us remember and memories influence the mood. The sea, sun-drenched cypresses, nocturnal jasmine... all together they draw an olfactory landscape indissolubly linked to Villa Certosa and the sweetness of its holiday resort.

site: Capri (IT)  
year: 2022 - ongoing  
client: private  
program: boutique hotel garden  
architecture: Alberto Izzo & Partners (IT)  
extension: 1500 m2



View of the project site adjacent to the Certosa di San Giacomo



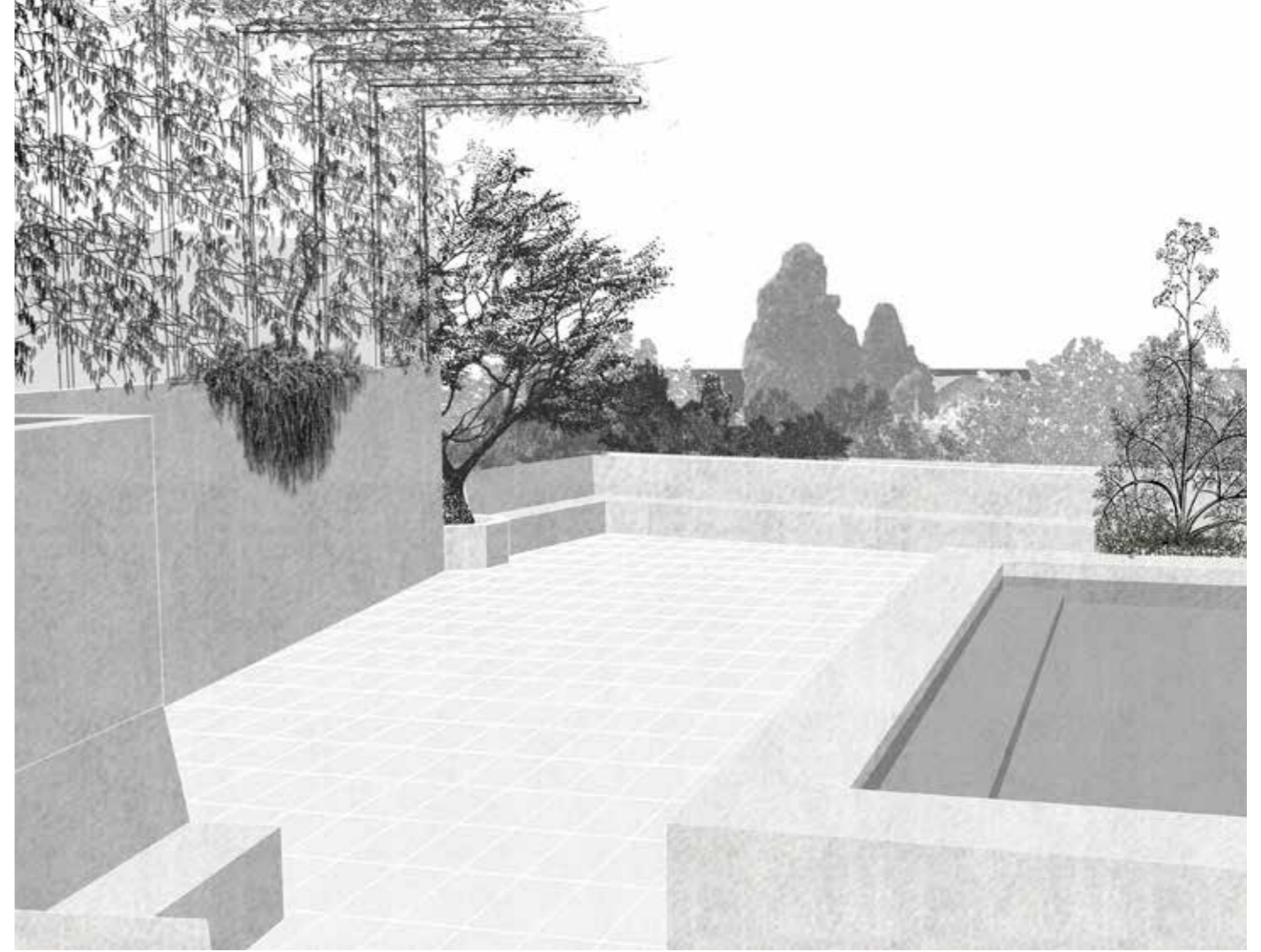


The project of the restoration with the new pool





Vegetation of a garden in Capri

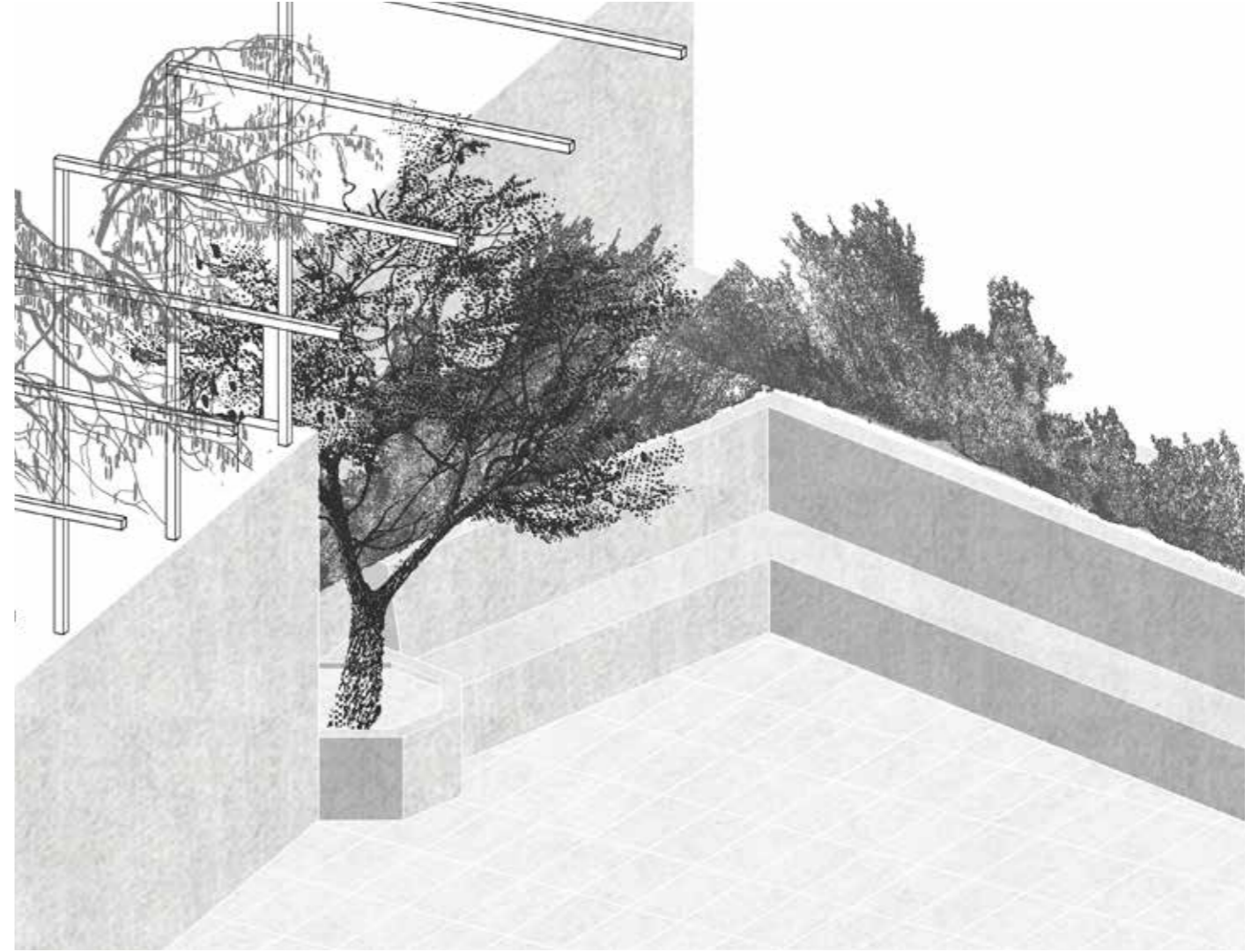


View of the landscape intervention





A pergola of wisteria



View of the bench surrounded by fragrant vegetation

## Villa Nuccorini

A 16th century villa with its gardens, farmland, vineyard and woodland has been restored and along with it the entire landscape system that surrounds it.  
Reading and studying this garden suggests imaginative journeys that we take through the history of gardens. This journey can also take us far away in space and time, exploring projects, places and landscapes that resonate with the garden of Lucca. However, we always return to the starting point, filtering the encounters of this journey through the local identity of the place to design a multifaceted project, a microcosm always consistent with its nature and that of the people who inhabit it.

site: Lucca (IT)  
year: 2020 - ongoing  
client: private  
program: garden, park and vineyard project  
extension: 15 hectares









The new Cedar tree Terrace



Pool garden maquette



Study for the *parterre* restoration (left) and the cloud garden (right)



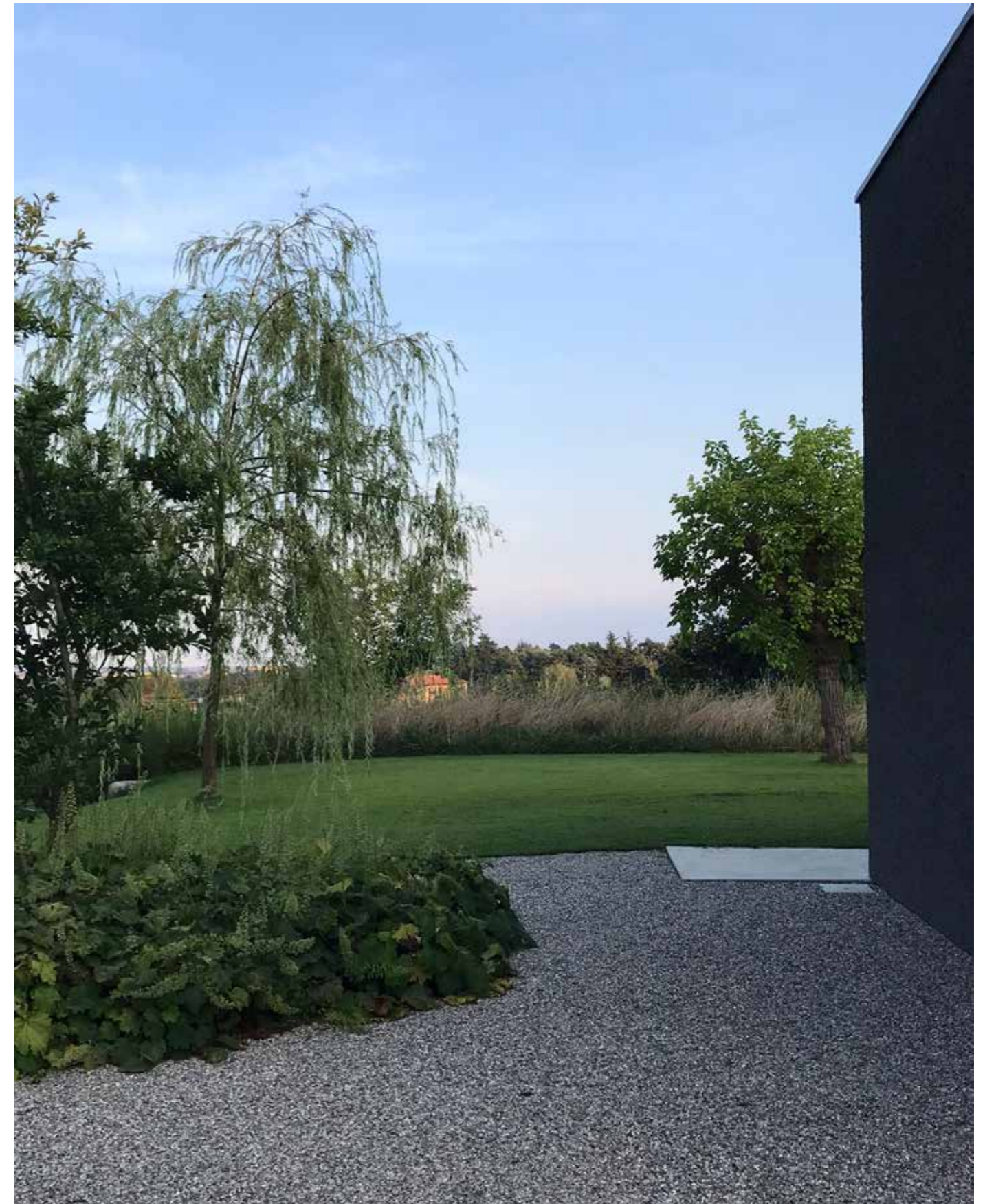


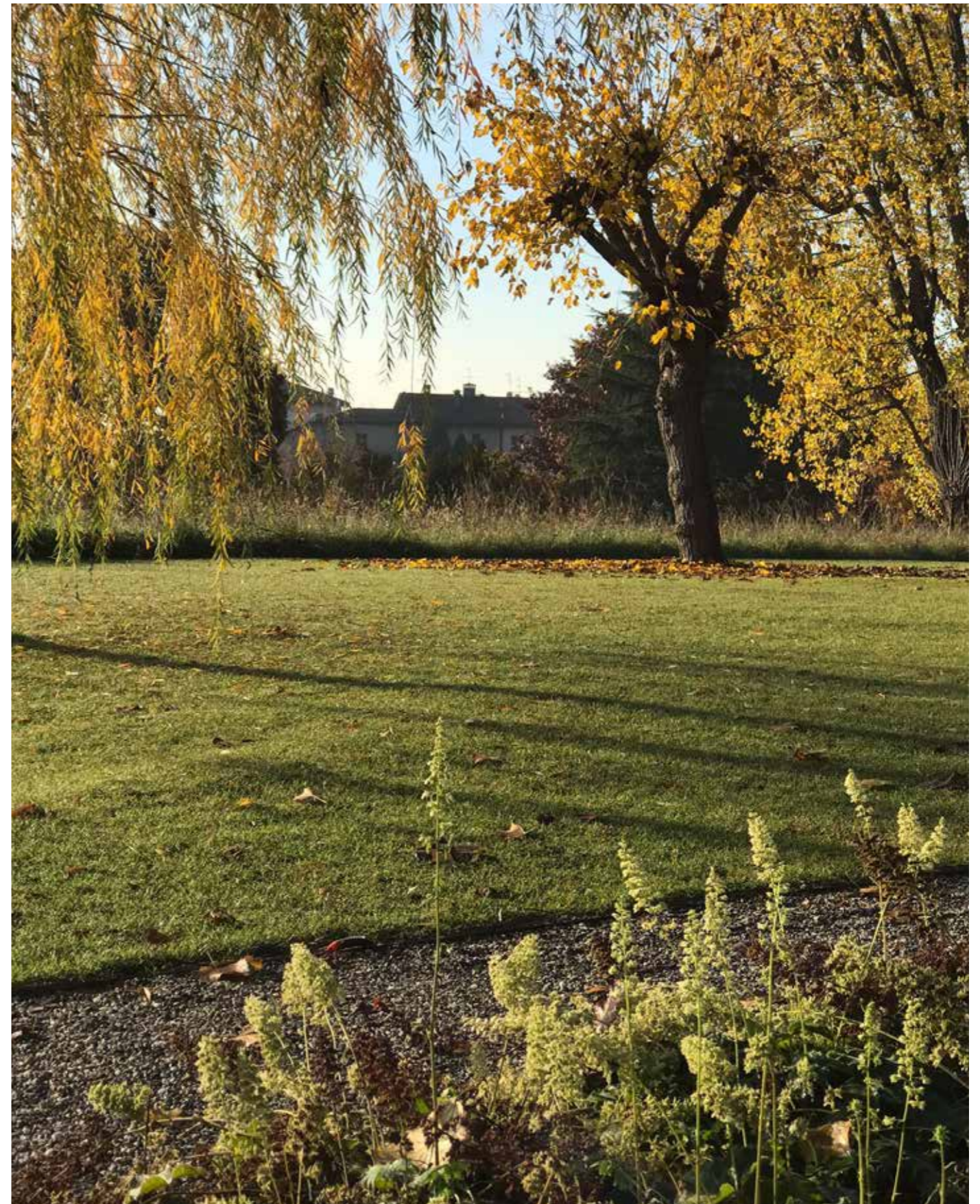


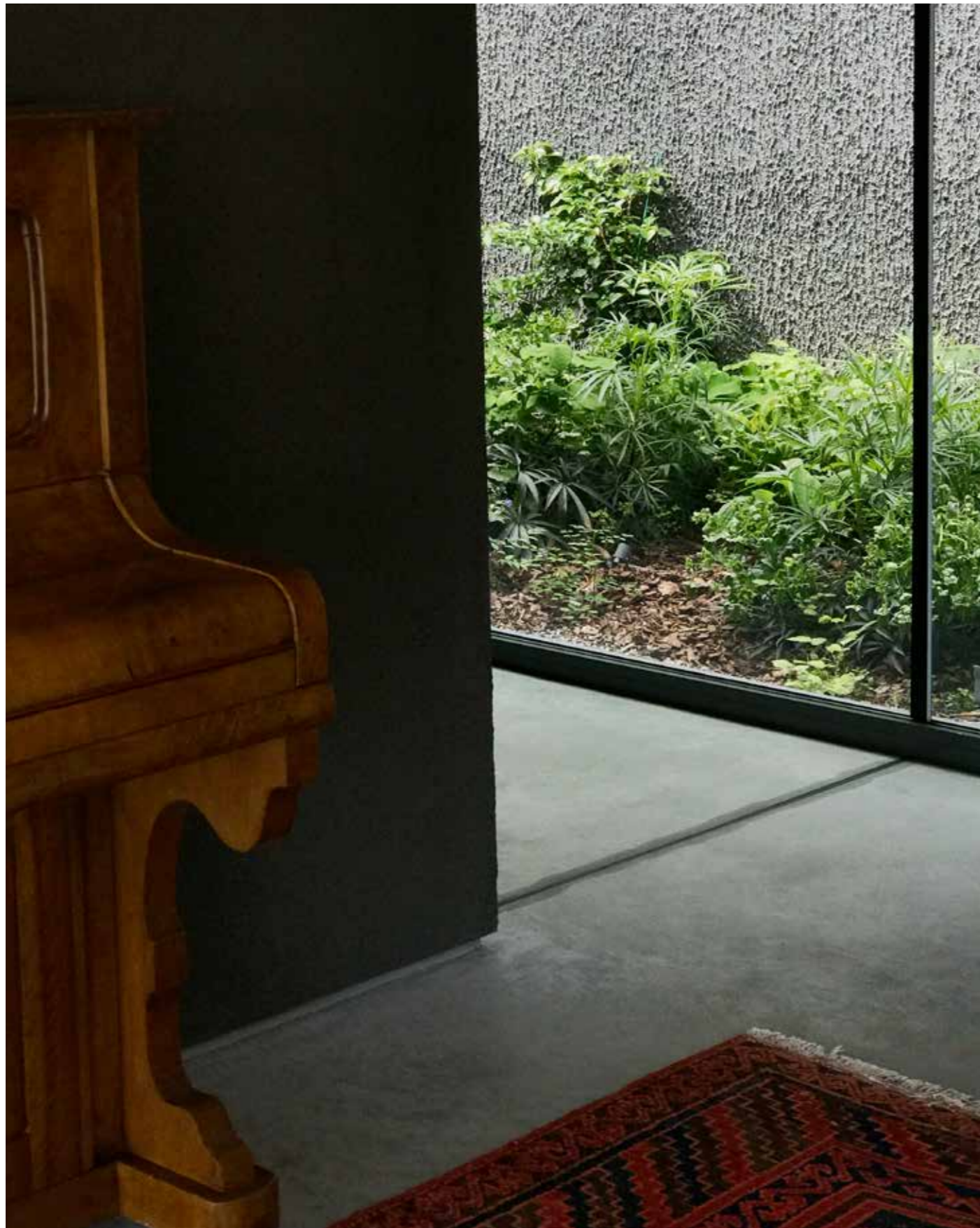
## Villa MS

We designed a garden around the sound of its lawn. A wild meadow is left to grow as the surrounding backdrop to the garden and a feathery slope of willows will create the perfect condition for crickets to find a home and sing on summer evenings. The fireflies will glow here in May. And in the winter, birds will sit on the branches to be watched from inside the house. The plant species chosen reflect pieces of the surrounding landscape and encourage animal visitors, bound to the memory of the inhabitants of the house. It is a non-philological transposition of the context, its echo.

luogo: Monticello Brianza, Lombardia  
anno: 2020 - 2021  
cliente: privato  
programma: Progetto del giardino dell'abitazione  
superficie: 3000 mq







## Main collaborations

Francesca Torzo Architetto, Genova IT  
David Chipperfield Architects, Milano IT  
Architecten Jan de Vylder Inge Vinck, Ghent BE  
Christ & Gantenbein, Basel CH  
Office, Brussels, BE  
Plan Común, Paris FR  
Oasi Architects, Busto Arsizio IT  
AMArchitecture, Milano IT  
Supervoid Architects, Roma IT  
Ganko office for Architecture, Milano IT  
Enrico Dusi Studio, Venezia IT  
Laboratorio Permanente, Milano IT  
Louis Vuitton, Paris, FR  
Enrico Molteni Architects, Milano IT  
Alberto Izzo & Partners, Napoli IT  
VG13 Architects, Milano IT  
Space Caviar, Milano IT  
Baukuh, Milano IT  
Batline Architecture, Brussels BE  
Salottobuono, Milano IT  
Studio Utte, Milano IT

## Contacts

Lorenzo Rebediani paesaggista  
+39 3472505847

Vera Scaccabarozzi paesaggista  
+39 3313174215

studio@rslandscapes.it  
rslandscapes.it

Via Marco Aurelio 21, 20127 Milano IT