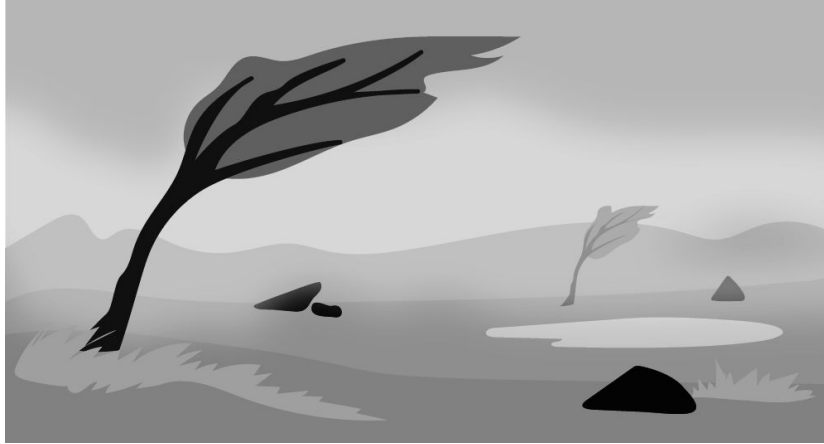


# Art test - Where

Updated 01-05-2024  
18 participants

# Barren Lands



Barren Lands	Word	Count
	Windy	9
	Desolate	4
	Hostile	4
	Bare	3
	Cold	3
	Empty	3
	Dead	2
	Lonely	2
	Sad	2
	Silent	2
	bendy	1
	Creepy	1
	Dark	1
	Dawn	1
	drastic	1
	Dry	1
	Empty	1

# Bog



Bog	word	count
	Dead	10
	Sad	4
	Wet	4
	Gloomy	3
	Swamp	2
	sorrowful	2
	Dangerous	2
	Mysterious	2
	Bleak	1
	Gross	1
	Life	1
	Dangly	1
	Doomsday	1
	Apocalyptic	1
	Open	1
	Airy	1
	Stinky	1
	Soggy	1
	Mossy	1

## Dark forest



Dark forest	Word	Count
	dark	5
	Eerie	4
	Mysterious	4
	Scary	4
	Cold	3
	Misty	2
	Foggy	2
	Quiet	2
	Gloomy	2
	Hidden	2
	Lush	1
	Tight	1
	Lost	1
	Thick	1
	Trees	1
	Murky	1
	Foreboding	1
	Moist	1
	heavy	1

# Light Forest



Light forest	Word	Count
	light	4
	Silent	3
	Calm	3
	cold	2
	Lively	2
	fresh	2
	vibrant	1
	chaotic	1
	crowded	1
	sharp	1
	Full	1
	Cute	1
	variance	1
	rocks	1
	Phantom sensation	1
	glassy	1
	weightless	1
	Brave	1

# Dead forest



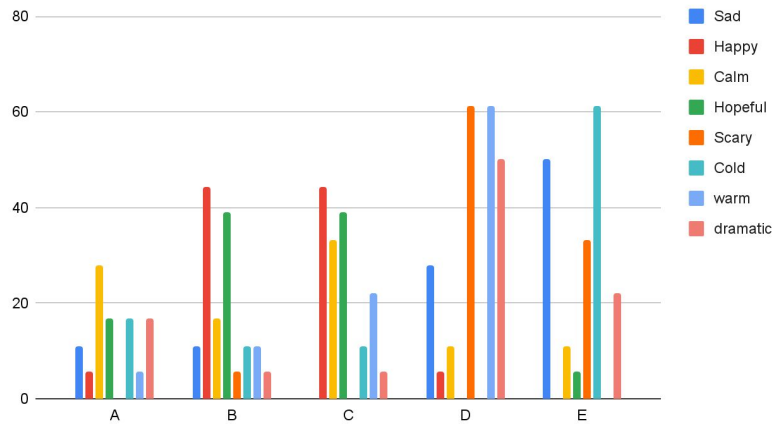
Dead forest	Word	Count
	cold	6
	dead	5
	Empty	3
	mysterious	3
	barren	2
	bright	2
	hopeful	2
	open	2
	awaiting	1
	awaiting	1
	bleak	1
	determined	1
	Dry	1
	Foggy	1
	Forest	1
	freezing	1
	Harsh	1
	hibernating	1

# Blood Forest

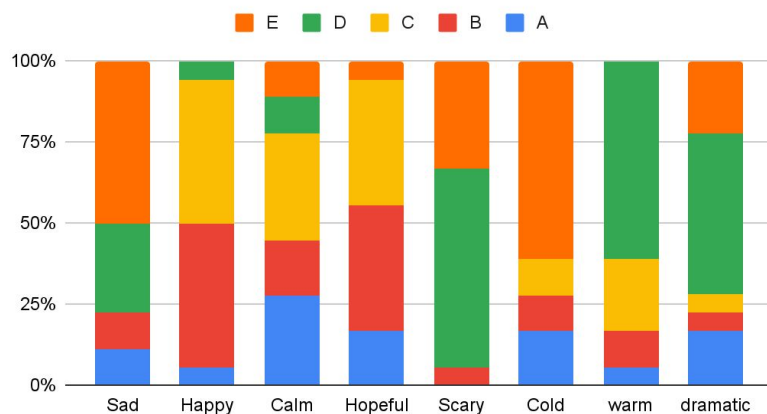


Blood trees / final chapter	Word	count
	windy	4
	dead	3
	beautiful	2
	hostile	2
	dry	2
	sadness	2
	cold	2
	happy	2
	final	1
	farewell	1
	cinematic	1
	epic	1
	Peace	1
	unite	1
	Mysterious	1
	fall	1
	Japan	1
	Blustery	1

A, B, C, D og E



A, B, C, D og E



A



B



C



D

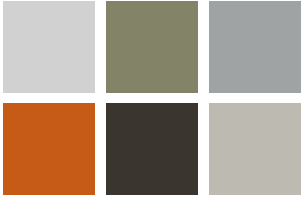


E

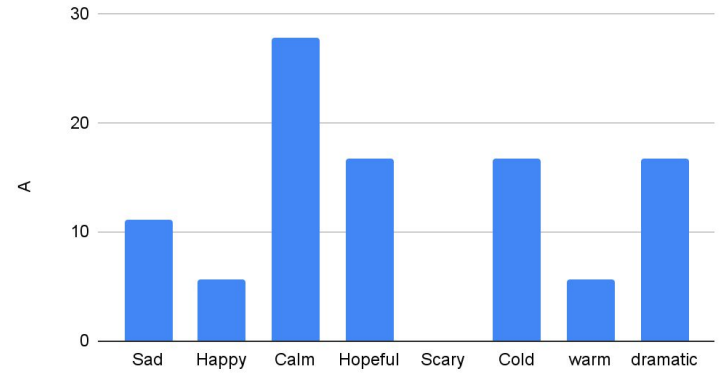




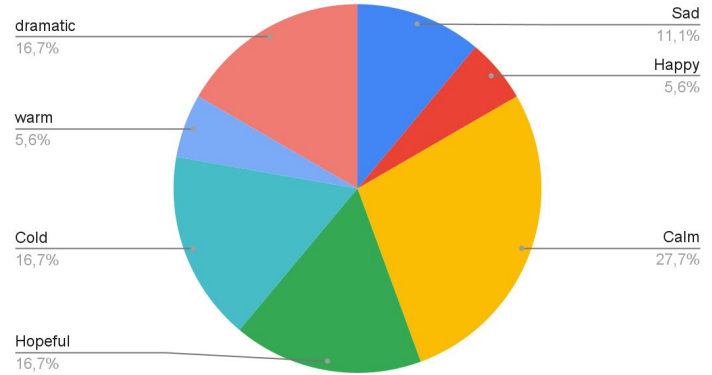
A



A ift.



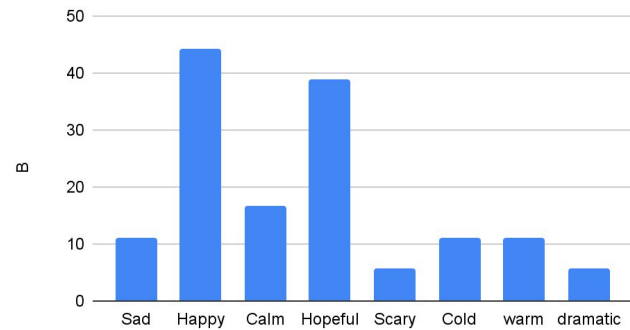
A ift.



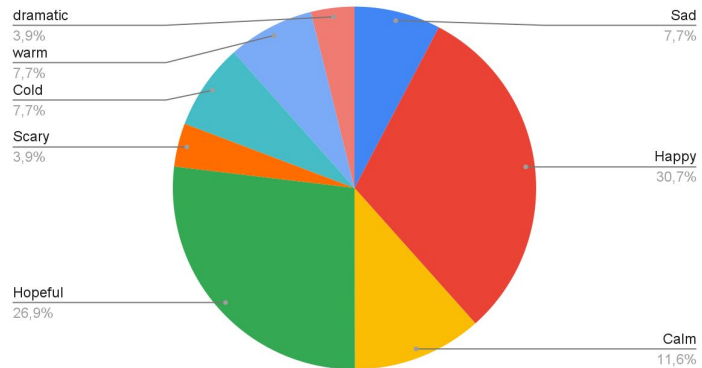
B



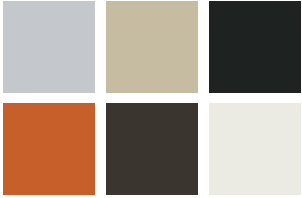
B ift.



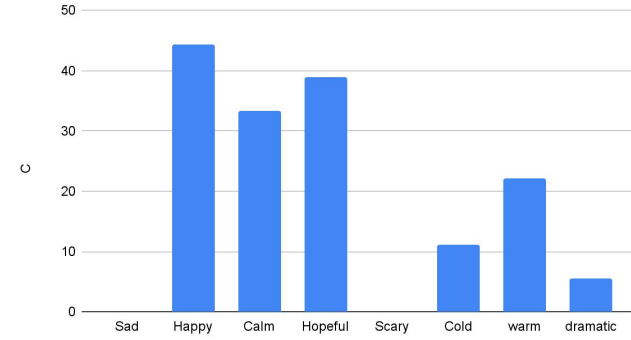
B ift.



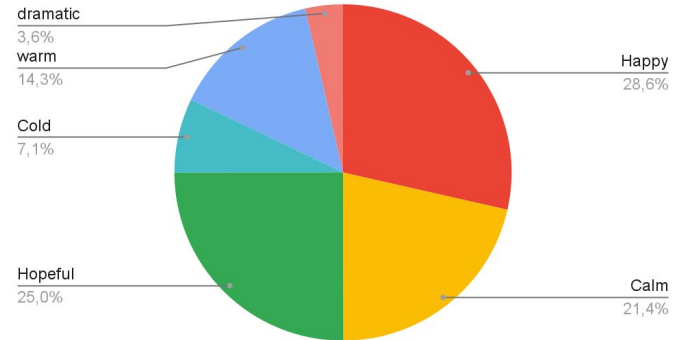
C



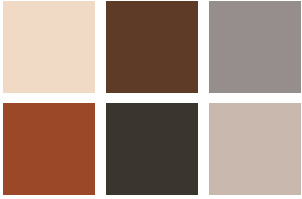
C iff.



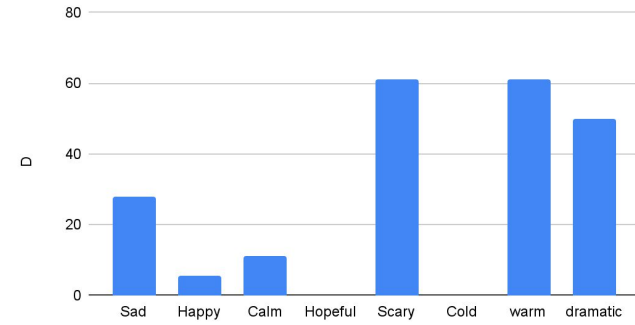
C



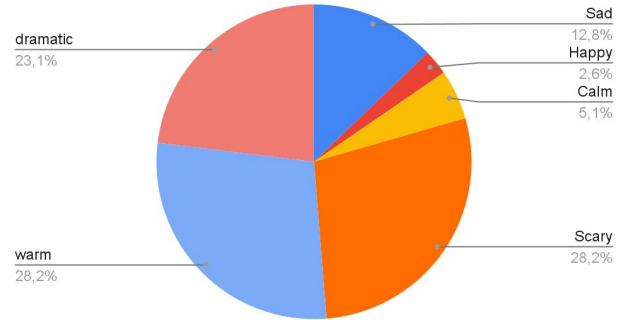
C



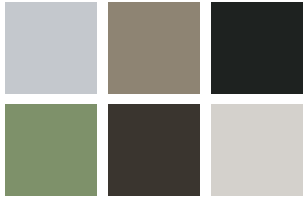
D ift.



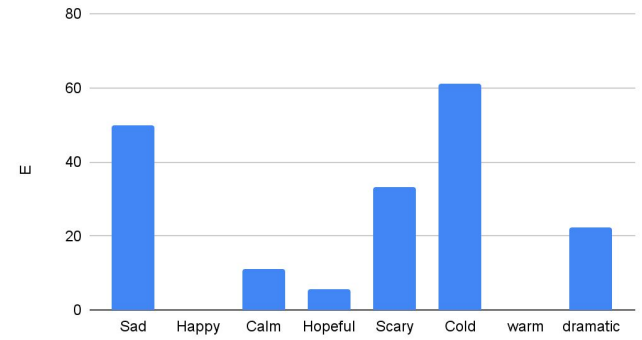
D ift.



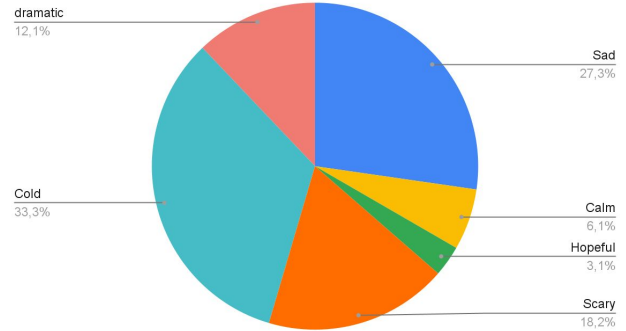
C



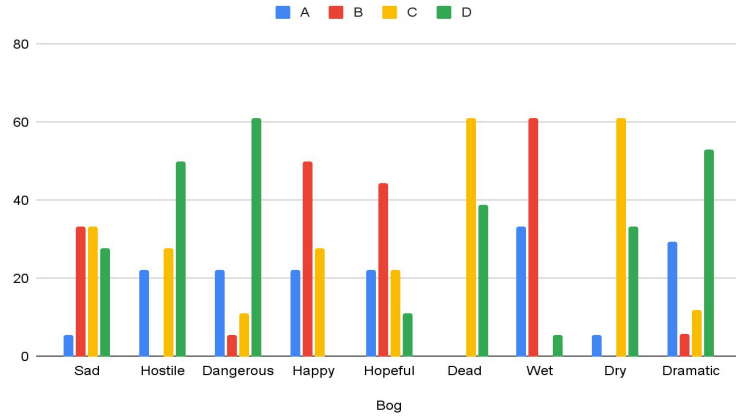
E ift.



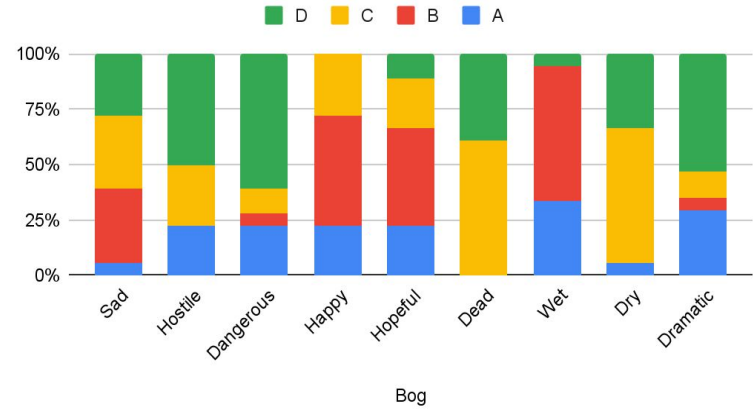
E ift.



A, B, C og D



A, B, C og D



A



B



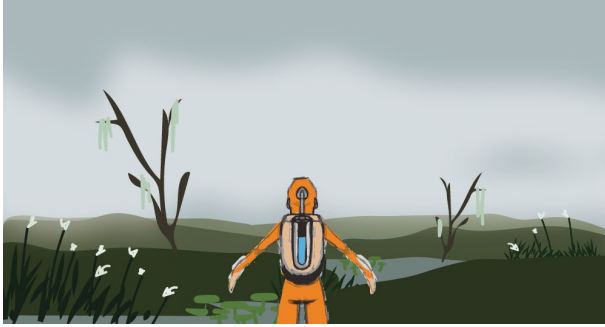
C



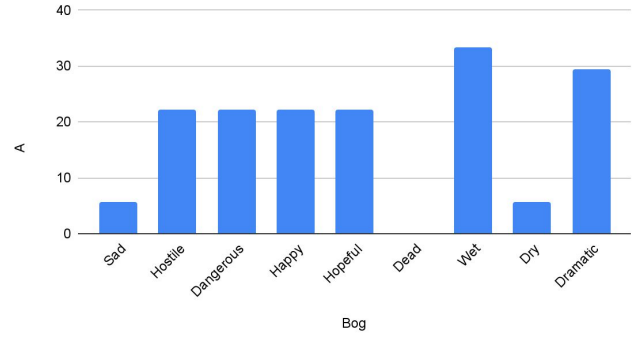
D



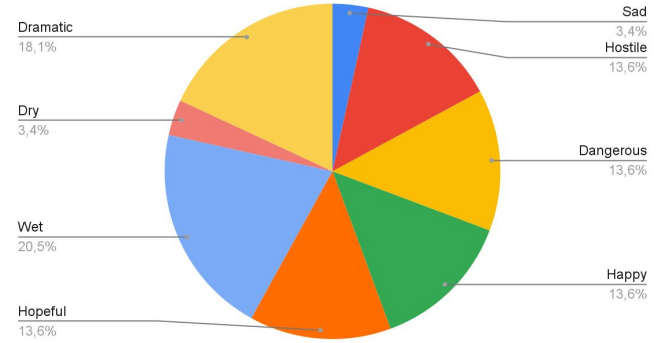
A



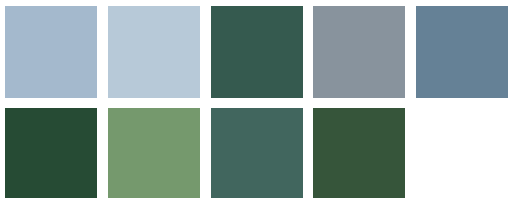
A iff. Bog



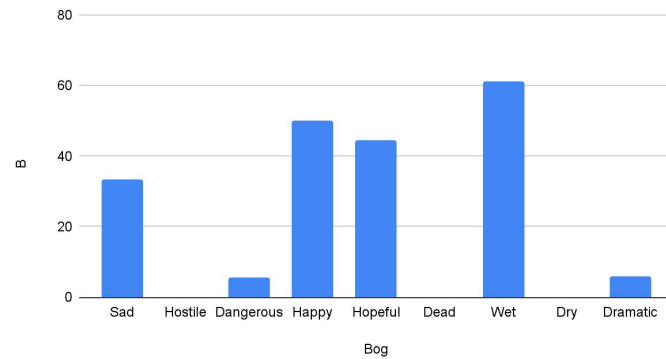
A



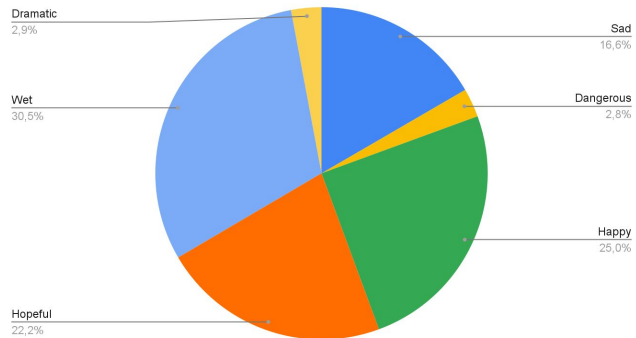
B



B ift. Bog



B ift. Bog

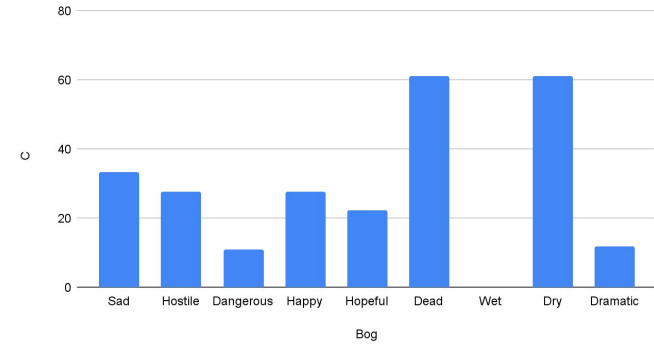




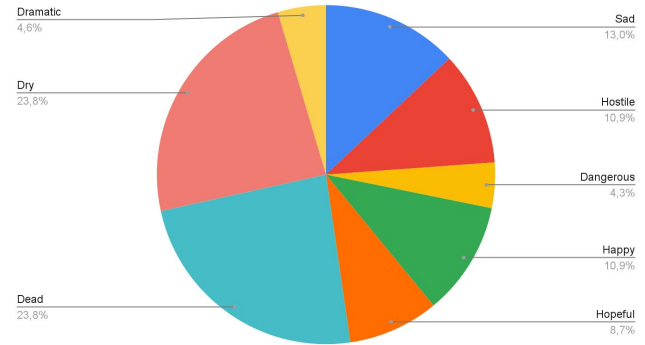
C



C iff. Bog



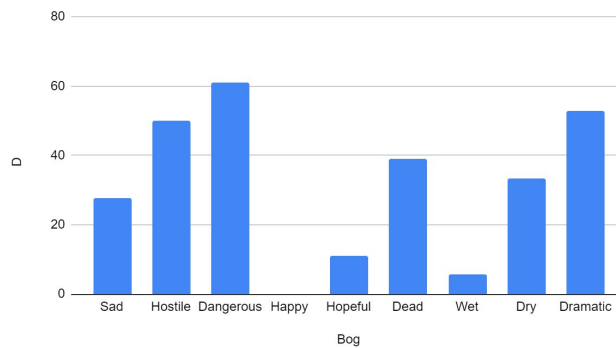
C



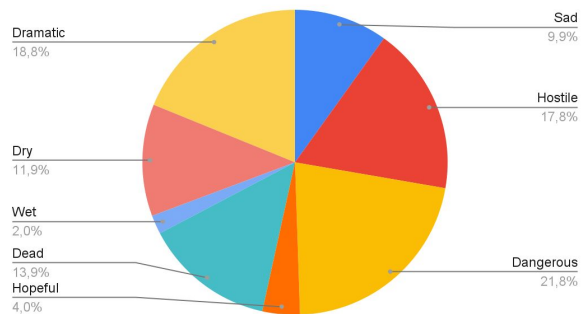
D



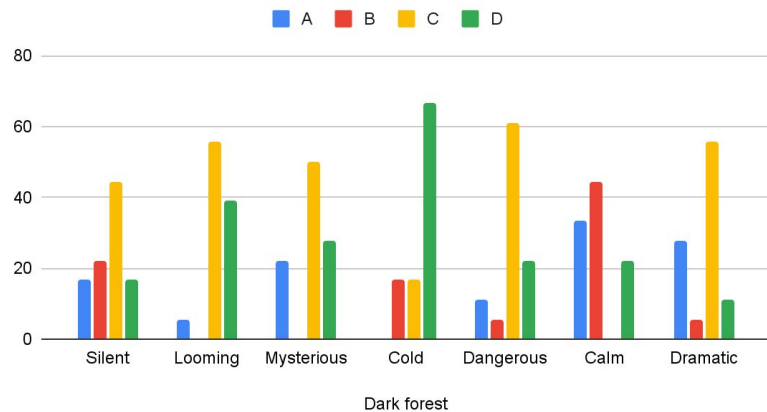
D ift. Bog



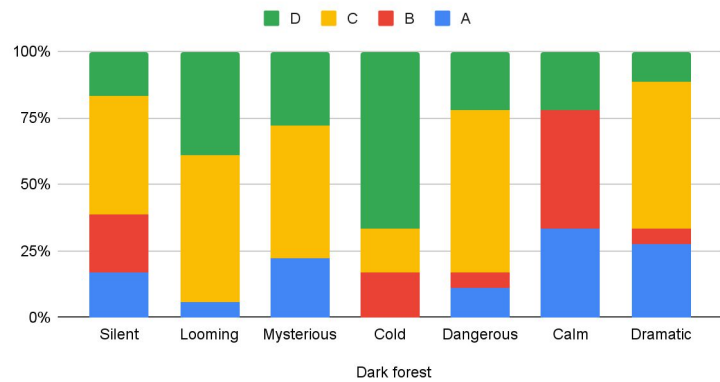
D ift. Bog



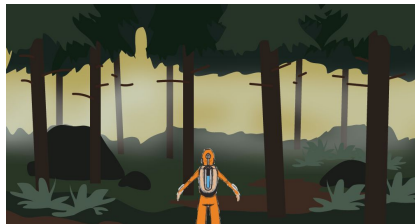
## A, B, C og D



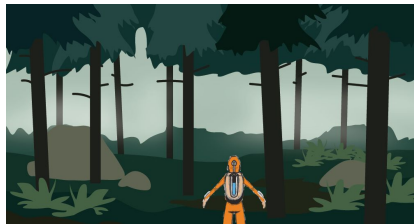
## A, B, C og D



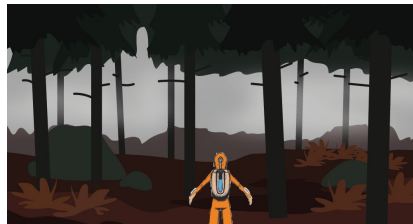
A



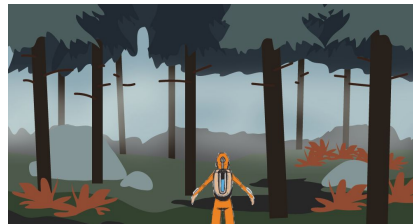
B



C



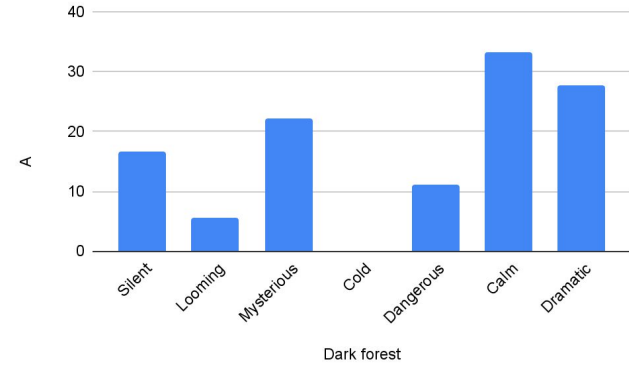
D



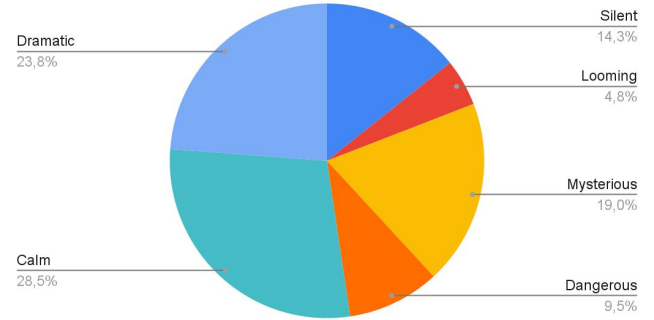
A



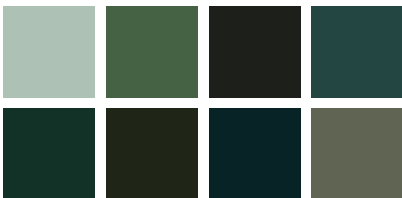
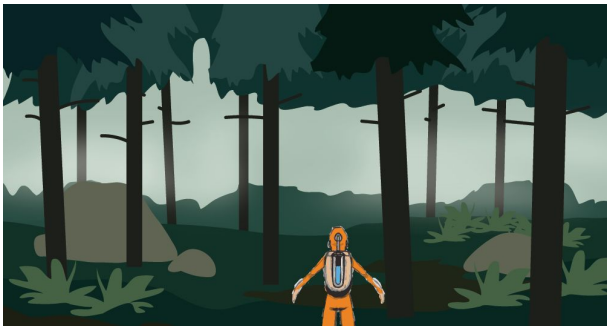
A iff. Dark forest



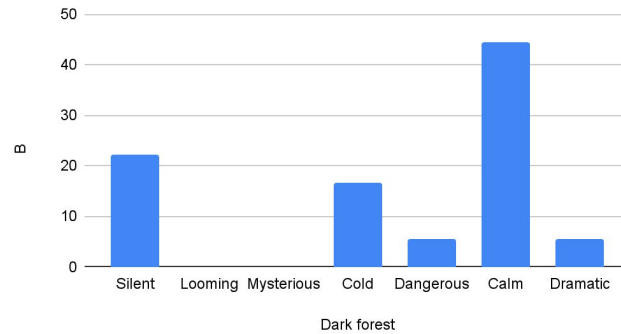
A



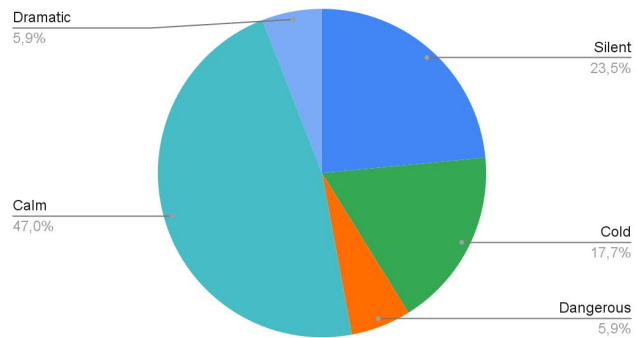
B



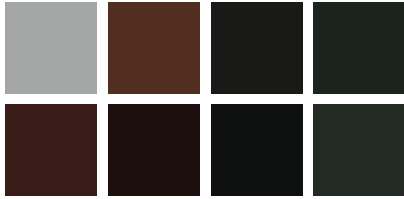
B ift. Dark forest



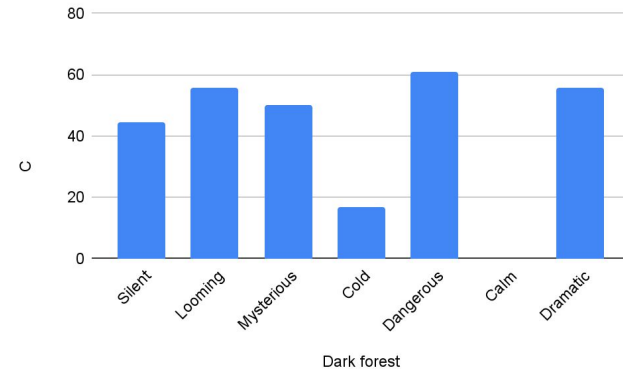
B ift. Dark forest



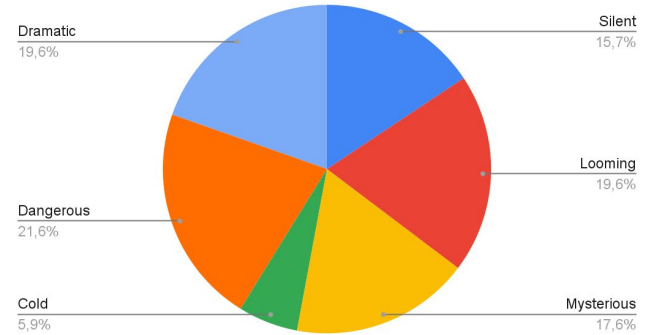
C



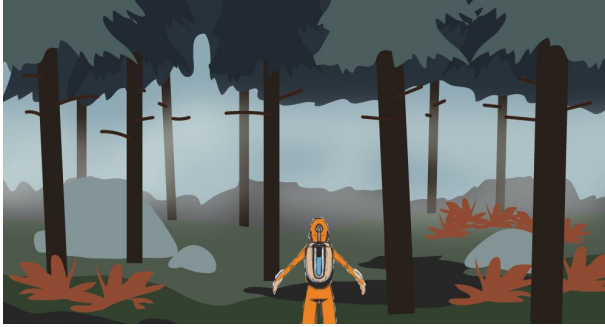
### C iff. Dark forest



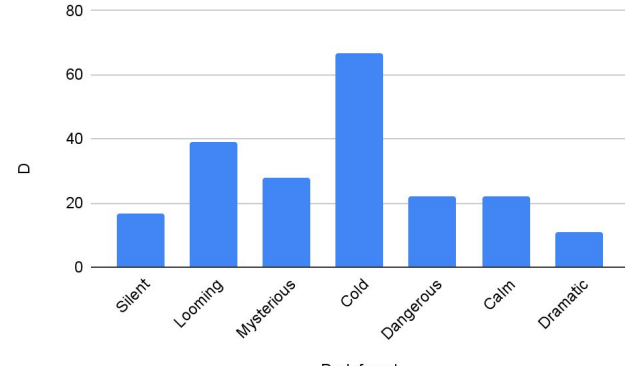
C



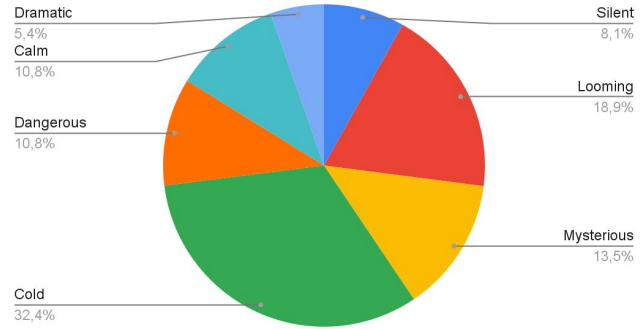
D



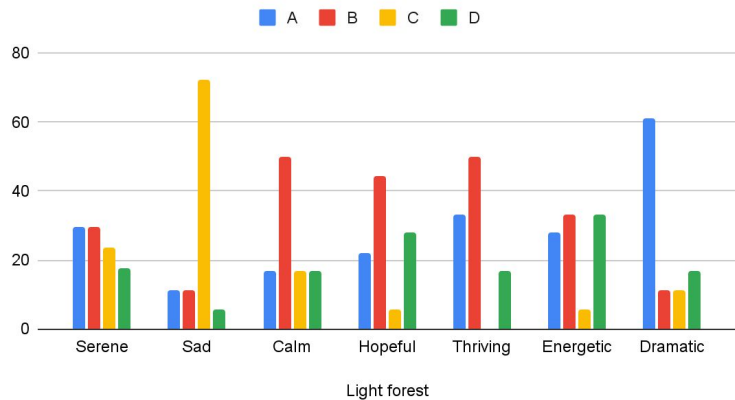
D iff. Dark forest



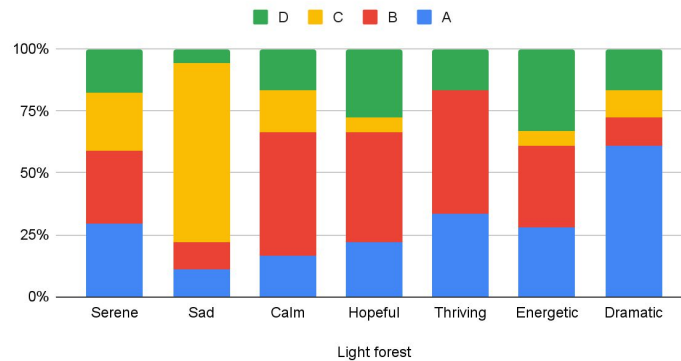
D



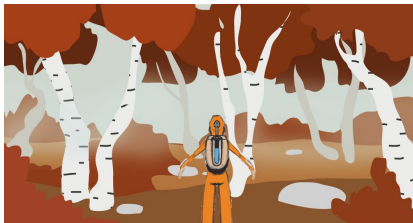
### A, B, C og D



### A, B, C og D



A



B



C

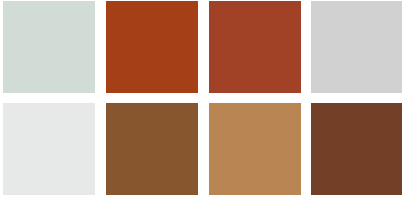


D

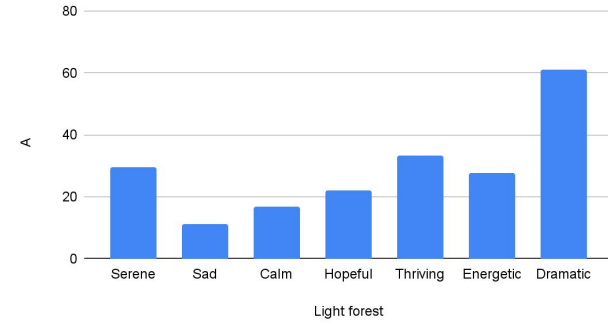




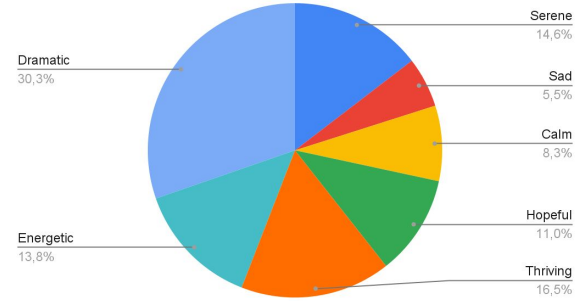
A



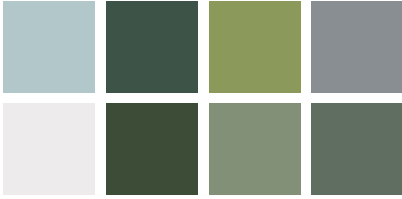
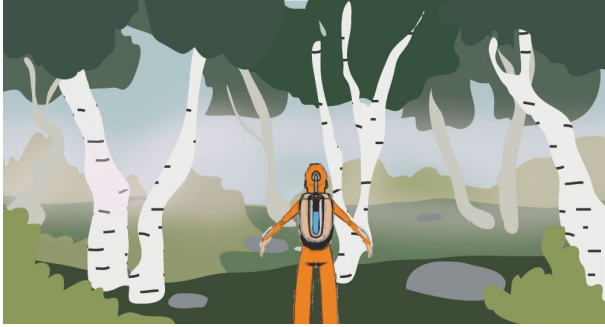
A ift. Light forest



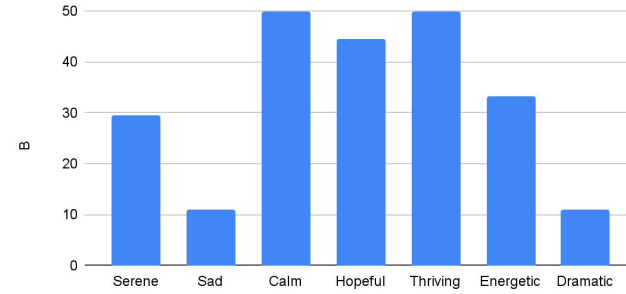
A ift. Light forest



B

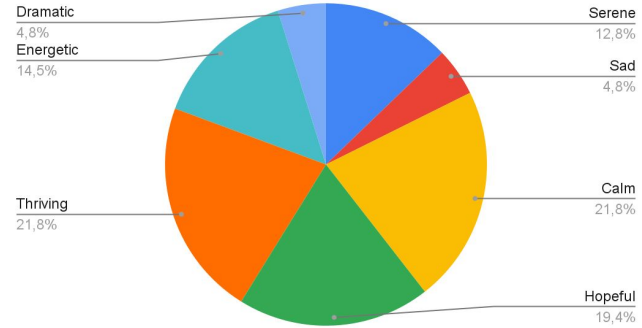


B ift. Light forest

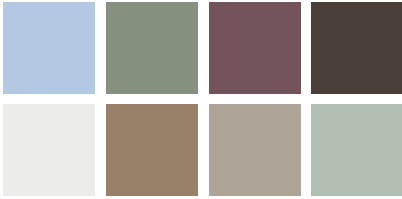


Light forest

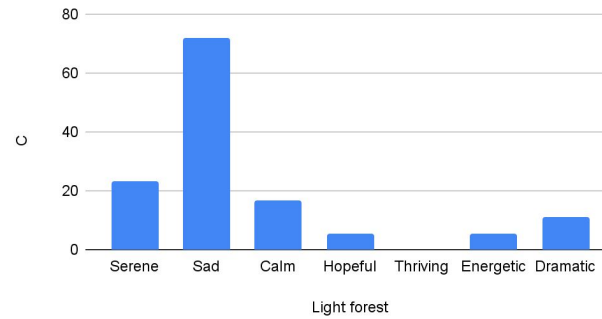
B



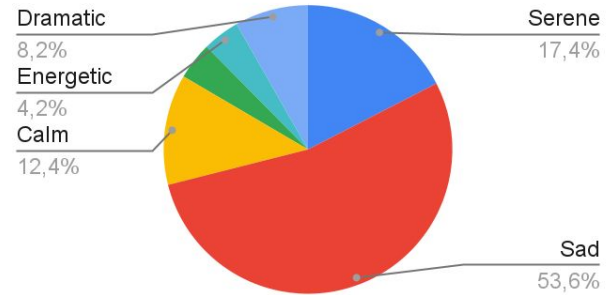
C



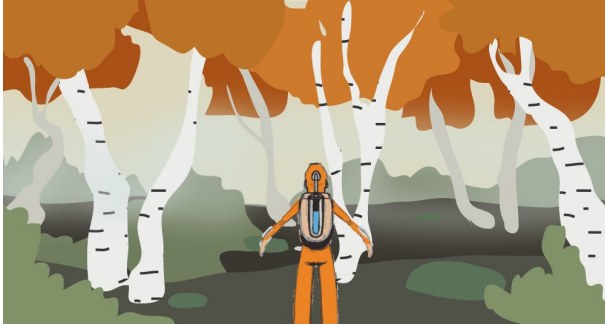
C iff. Light forest



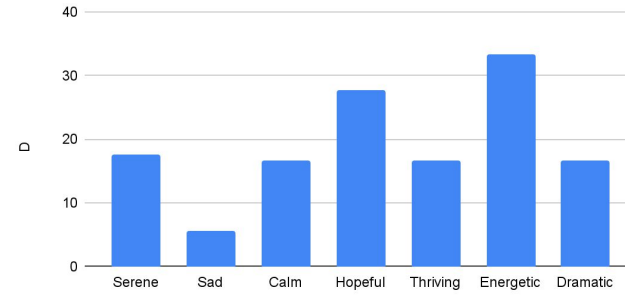
C



D



### D iff. Light forest



Light forest

D

