

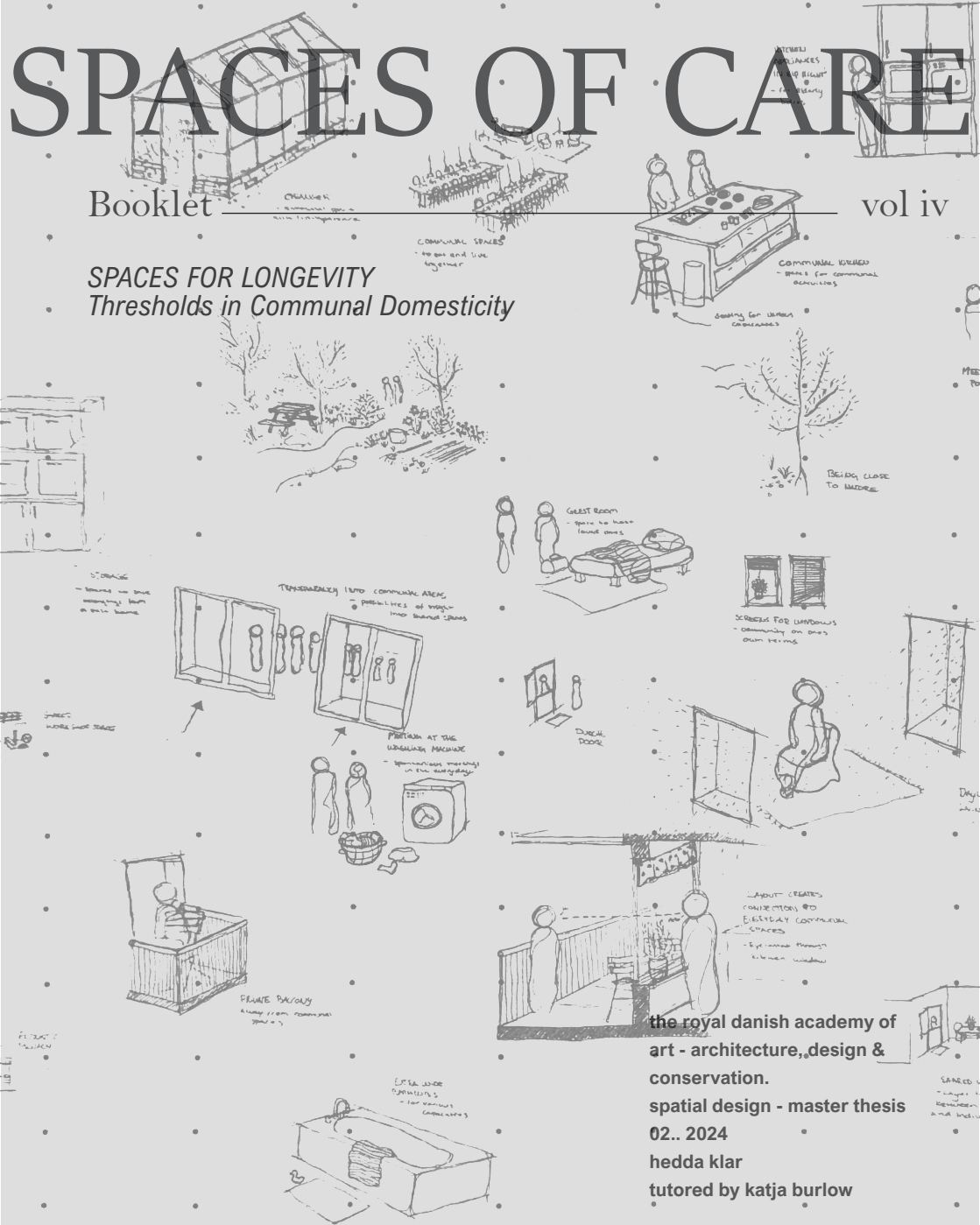
ATLAS OF SMALL SPACES OF CARE

SPACES OF CARE

Booklet

vol iv

SPACES FOR LONGEVITY Thresholds in Communal Domesticity



the royal danish academy of
art - architecture, design &
conservation.
spatial design - master thesis
02.. 2024
hedda klar
tutored by katja burrow

background

- bodies + space + care
- small spaces of care
- ways of care

atlas

- care contexts
- key spaces

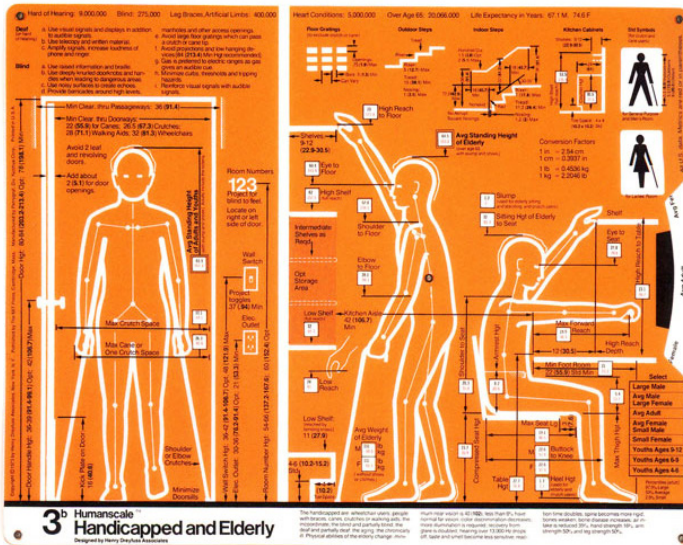
BODIES + SPACE + CARE

Good living conditions for elderly do not only consist of societal frameworks or even direct care methods but also of what brings meaning and personal satisfaction to individual life. As well as the opportunities for a sense of belonging and personal agency in all phases of life which comes from the possibilities for participation and inclusion in the everyday scenery.

Architectures response to inclusion has long been a set of standards on accessibility which rather than creating inclusion ignores the diversity the human bodies and its

interaction with space. By questioning standardized design and assumptions on accessibility its possible to open up the spatial design to include more bodies and ways of accessibility, while still addressing the problematics of unaccessible environments for elders both in terms of bodily and social participation.

(Hauderowicz, Ly Serena, 2020)



(Fig 11) : Human scale Handicapped and Elderly, 1974-1981
Henry Dreyfuss Association

When growing older our bodies capacity changes, while not in need of professional care our relation to our surrounding changes. Spatial consideration to changing bodies on an everyday scale could provide a form of care in the daily environment which would shape inclusion and well being for active seniors and anyone growing older.



- Hearing

Loss of hearing reduces the ability to communicate and distinguish voices, which can cause social exclusion.



- Vision

After fifty the sight starts to get worse, being the most common change many learn to adopt life accordingly.



- Perception

Difficulties in visual distinguish affects how we relate, understand interact with the world around us.



- Strength and Stamina

A person in their seventies have generally half the strength of a twenty year old. Losing strength affects the ability to preform daily actions.



- Mobility

Mobility can become reduced by injuries and a insufficient life style affecting the possibility to move around in the everyday.



- Voice

The voice changes with age and can be affected in a diverse way providing new color and tonalities.



- Bowel & Bladder Weakness

Incontinence is a normal part of aging as the bladder

SMALL PLEASURES OF LIFE

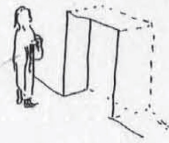
TO WORK OR WRITE AT A CREEPER SHADED WINDOW



TO SEE THE SUNLIGHT SPREAD ALONG THE FLOOR

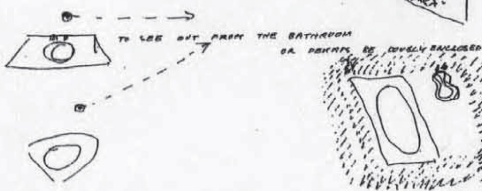
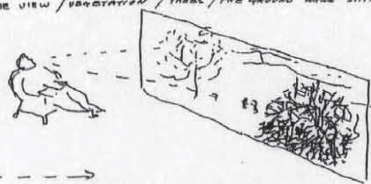


TO STAND AND LOOK OUT WITHOUT GLASS

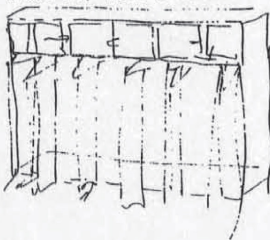


129

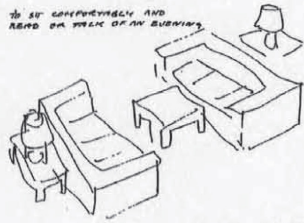
TO SEE THE VIEW / VEGETATION / TREES / THE SPREAD WHILE SITTING



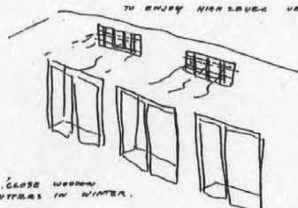
TO HAVE EASY ACCESS TO PERSIANAS WITHOUT LEAVING THEIR PLEASURE ALL THE TIME



TO SIT COMFORTABLY AND READ ON THE BACK OF AN SOFA



TO ENJOY HIGH LEVEL VENTILATION IN SUMMER



TO LEAVE WOODEN SHUTTERS IN WINTER.

Background

SMALL SPACES OF CARE

Through the research into senior co-livings and social relations between elders and the home through case studies and visits in booklet iii a collection of essential spaces that provide care in the everyday has formed. These spaces and their significance has been gathered in this atlas, as a collection of “Small Spaces of Care”

Background

WAYS OF CARE

By looking at how care has been depicted and perceived through different artwork, one gets a representation of various forms of care that helps to inform a visual understanding of care and what relationships and context it can and has existed in. The collected artwork gives a brief insight into a few moments of care in various social, political, spatial and phenomenological contexts which tell stories of care from a medium that inspires participation and invites to new understandings and experiences of care.

REFERENCE: "The Sick Woman"
by Edgar Degas





ATLAS

CARE FOR THE VULNERABLE

The Soup by Pablo Picasso 1902. represents a starving woman being assisted in the street. The Soup, is ambiguous. Is the older woman, weighed down by her poverty, giving the soup to the small child or receiving it? Either way, it depicts the act of charity upon the basic need for nourishment.

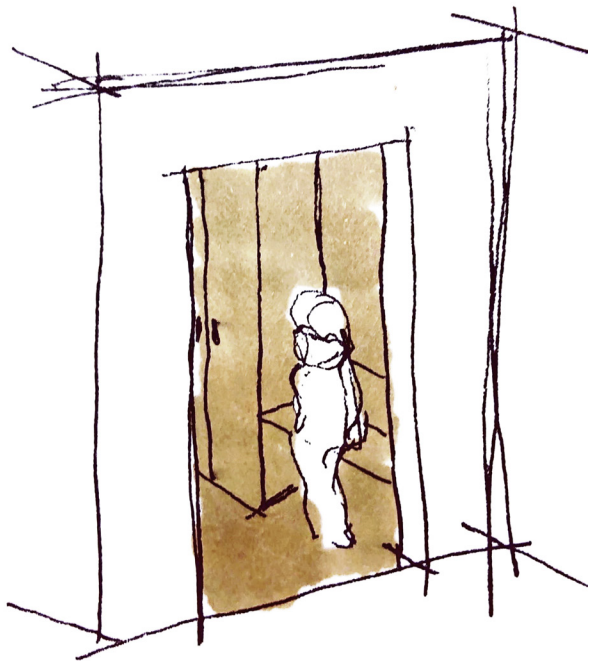




SPACES FOR OBSERVING

Space to participate in
communal or public
spheres from a distance.
The possibility to sensory
access rooms through
spatial filters that layers the
transitions between social
spheres. Working with
both horizontal and vertical
access,



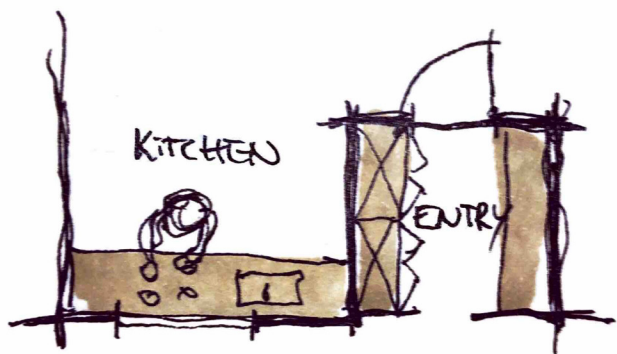


OPEN ENTRY SPACE TO PRIVATE UNITS

A shared space with the closest which can act like a spatial filter between the full communal and the fully private, as well as a functional space for easy storage and a seating to have possibility to enter ones home comfortably.

ENTRANCE + KITCHEN FACING THE COMMUNAL

Creating small moments that has the possibility to strengthen the community by making eye contact and share greeting form different social & spatial spheres,



COMMON
CORRIDOR







CARE FOR THE LAND

The gleaners by Jean-François Millet, 1857 shows three peasant women gleaning grain from a field after the harvest, displaying acts of communal care for the land, mutual aid and solidarity.



INTERIOR WINDOWS WITH SHUTTERS/BLINDS

The possibility to close of from the communal and feel fully private within the individual sphere.

DUTCH DOOR

Spatial elements that can help to engage and partake or close off from various levels of social interactions. A tool to signal availability or privacy.





TRANSPARENCY INTO COMMUNAL AREAS

The possibility to from a far have
the possibility to determine the
activities in the communal areas to
shape possibilities for participation
on one owns term.

FAMILY CARE

The Bath of Mary Cassatt, 1891 captures the nourishing care between mother and child through the act of bathing. An scene revealing the close bounds that enables intimate care within the family.

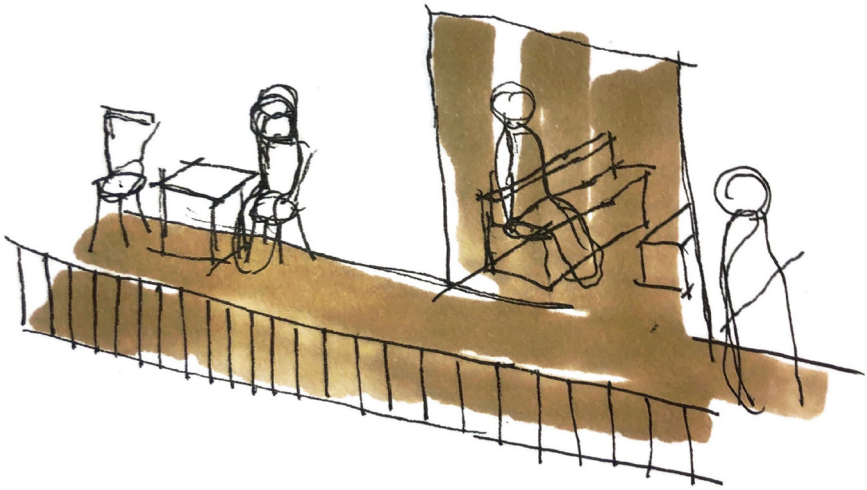


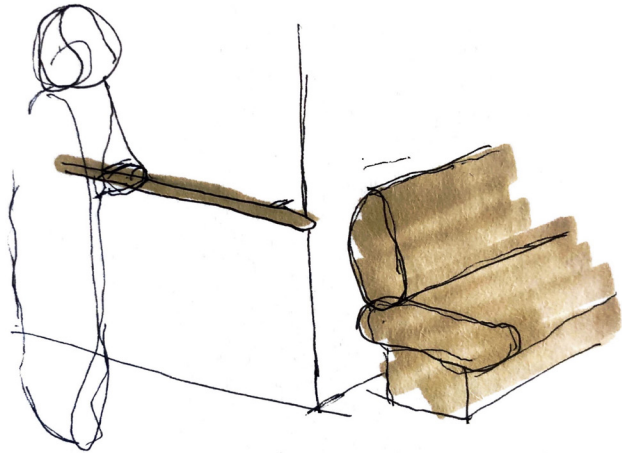


Enchiridion pour l'usage de M. Lamy
8

A WIDE GALLERY OR TERRACE

A communal space for seating in connection to the home in where one can observe everyday life and signal that one is open for interaction.



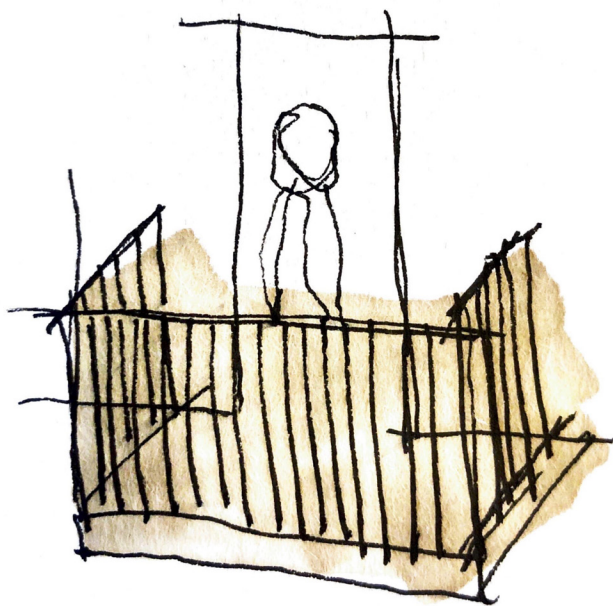


HANDRAILS AND SEATING IN TRANSITIONAL SPACES

The possibility to find support throughout the communal home when transitioning in-between spaces.

PRIVATE BALCONY/ TERRACE/ NICHE

Private outdoor space facing away from the communal but taking part of the public environment from a distance.

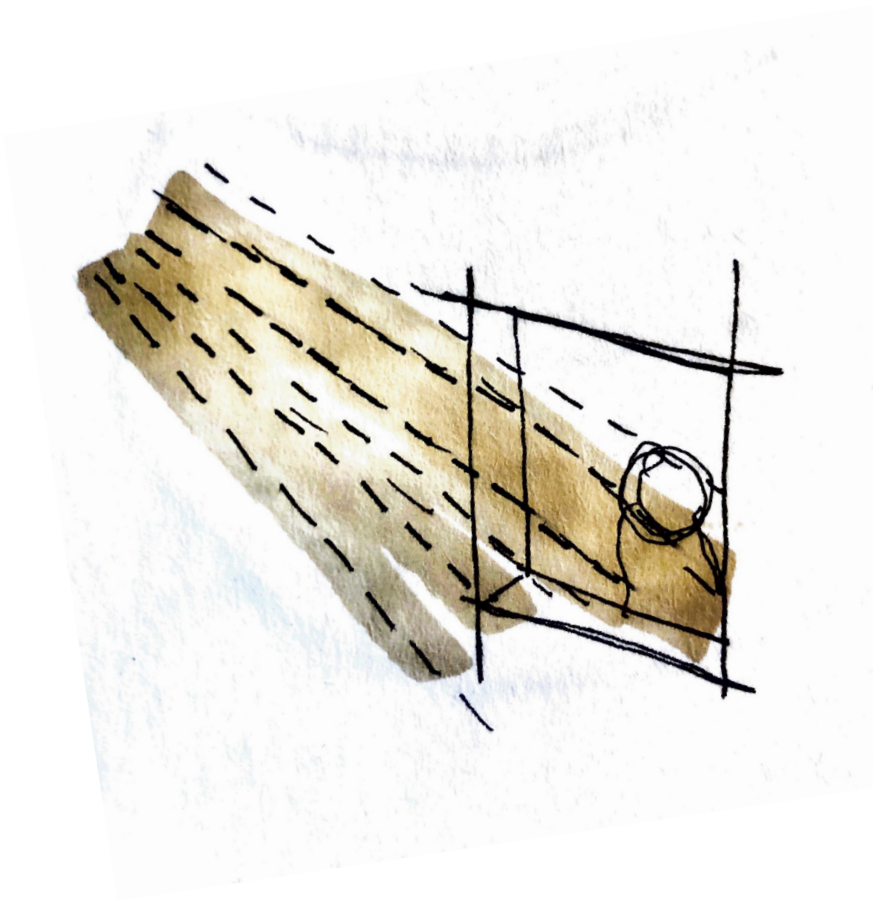


SOCIAL CARE

The Dance at Le Moulin de la Galette, by Pierre-Auguste Renoir, 1876. depicts a social gathering where people come to participate and share time and enjoyment, highlighting the pleasures and care in social gathering and communal activities.





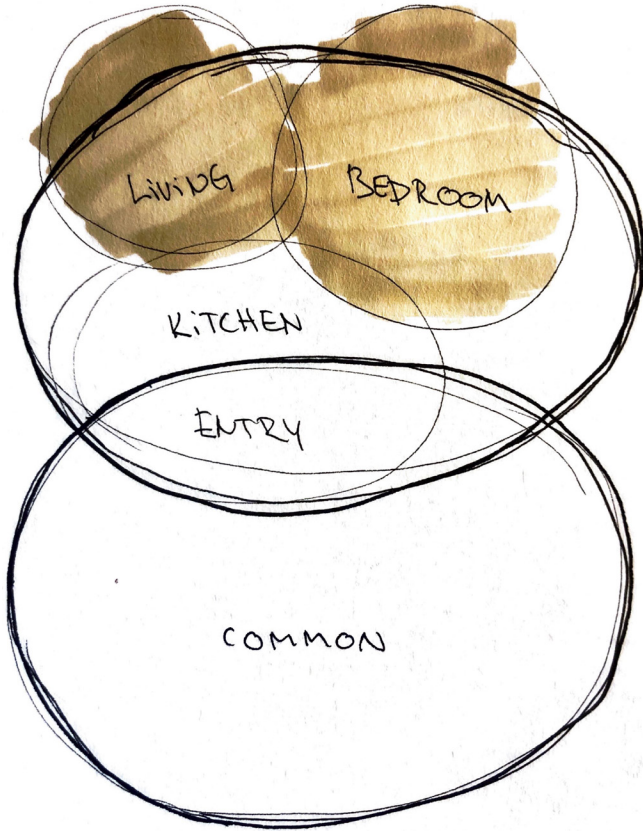


DAYLIGHT INTO THE HOME

Quality private spaces with daylight access. Sun light entering from different directions through the day.

BEDROOM + LIVING AWAY FROM COMMUNAL SPACE

The most intimate spheres are located away from the access to the communal spaces to have areas of full privacy.



LIVING

BEDROOM

KITCHEN

ENTRY

COMMON



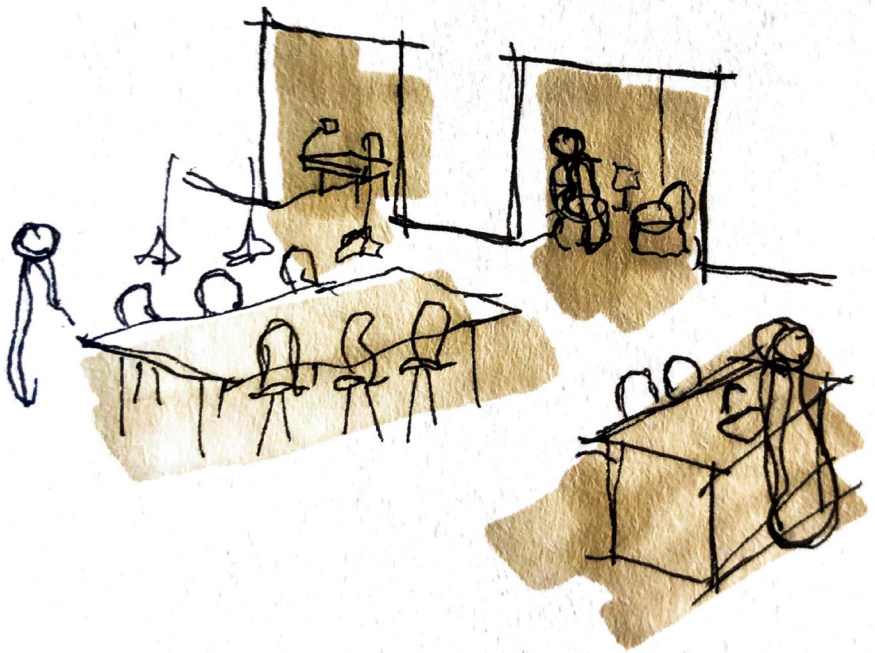


INSTITUTIONAL CARE

Ward in the Hospital in Arles by Vincent Van Gogh, 1886 where painted at his time spent at the Arles Hospitals and depicts a organized system of care with rows of beds, nurses and patients, while projecting the subconscious feelings of isolation and confinement of the institution.

GALLERY OR TERRACE A COMMUNAL SPACE FOR SEATING IN CONNECTION TO THE HOME

A communal space in direct connection to the home where one can observe everyday life and signal that one is open for interaction.





TRANSPARENCY INTO COMMUNAL AREAS

The possibility to from a far have the possibility to determine the activities in the communal areas to shape possibilities for participation on one owns term.

PROFESSIONAL CARE

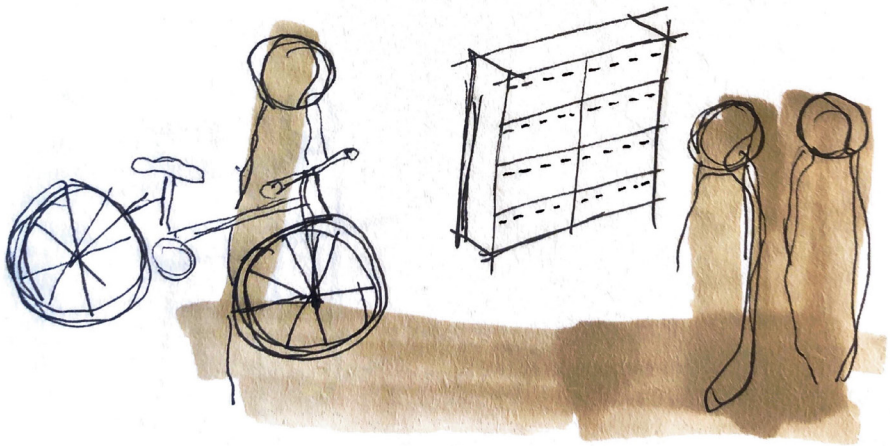
The Doctor's Visit by L. S. Lowry is showing a doctors visit to a patient private home depicting the doctors more intimate practice at the time. It conveys the compassion and expertise of medical professionals as they provide care and support to their patients with the family around.





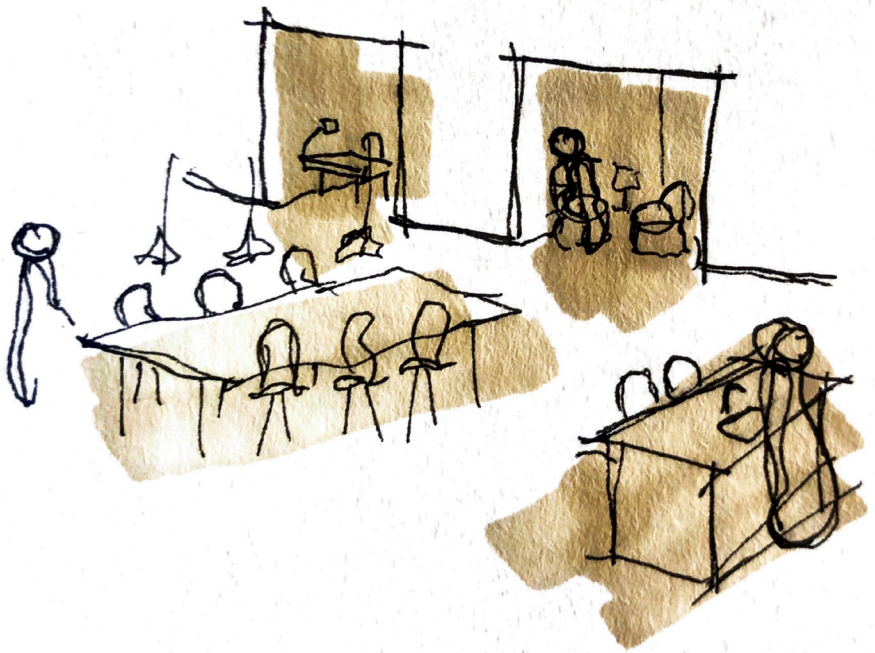
SPACES FOR MEETING

The post box, the washing room, the trash room and a bike stand are all spaces for spontaneous meetings which enhance community.



COMMUNAL SPACE THAT ALLOWS FOR DIFFERENT FUNCTIONS

Space to meet all together, in groups and to spend time individually to create spaces that can be used in various ways which stimulates many forms of community.







SELF CARE

The Blue Room, by Pablo Picasso, 1901, gives a intimate moment of a woman tenderly washing herself in her bedroom. Convening the intimate practice of the relationship to the own body and act of the everyday care preformed .

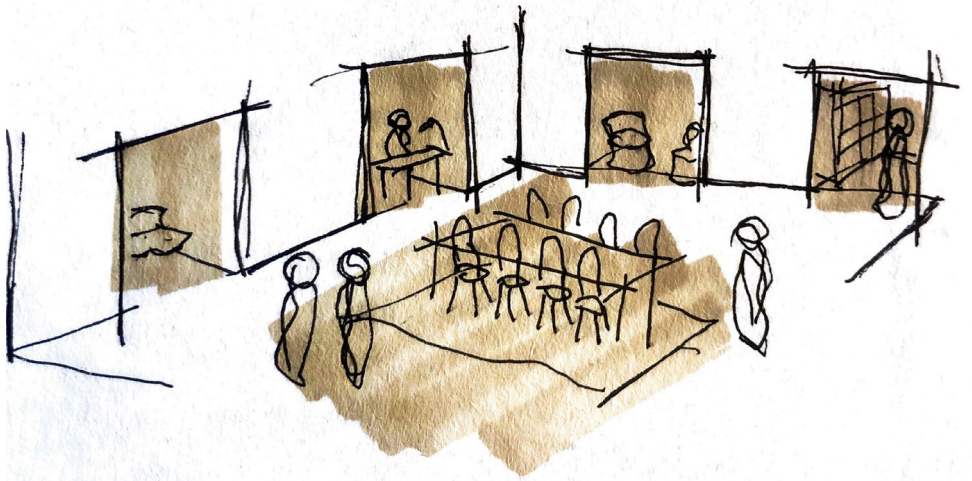


COMMUNAL KITCHEN FOR ELDERLY CAPABILITIES

A counter to sit and that faces other communal areas to engage socially while cooking. Appliances in a position appropriate for the elderly body to not bend down.

A CENTRAL COMMUNAL SPACE WITH SMALLER SPACE AROUND

A central space to all gather that are a natural meeting place, surrounded with smaller communal spaces to take part in smaller groups or individually from a distance to shape more dynamic and inclusive communal spheres.





OUTDOOR + SEMI-EXTERIOR COMMUNAL SPACE

A shard garden, a orangery and workshop creates possibilities for communal activities of care and maintenance to the home. It also creates a connect to the outside public spheres to interact and participate in public life,

CARE FOR THE WEALTHY

Breakfast by Claude Monet, 1917 displays a breakfast at the family home, with the members of the family in the front and their servant checking on them from the back, highlighting the relations between wealthy families and staff providing the service of care in the backdrop of everyday life.





SHELTERED SPACES BETWEEN INDOOR AND OUTDOOR

Possibilities to take part and observe the outdoor from a space sheltered from weather conditions, a space that provides both cover and openness.





CLOSE TO CULTURE + NATURE

Easy access to participate in cultural and outdoor activities and environments, being apart of the local sphere.



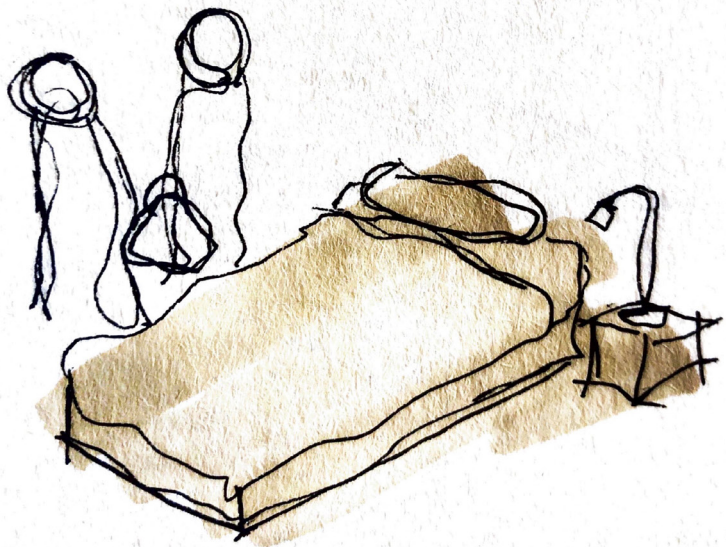


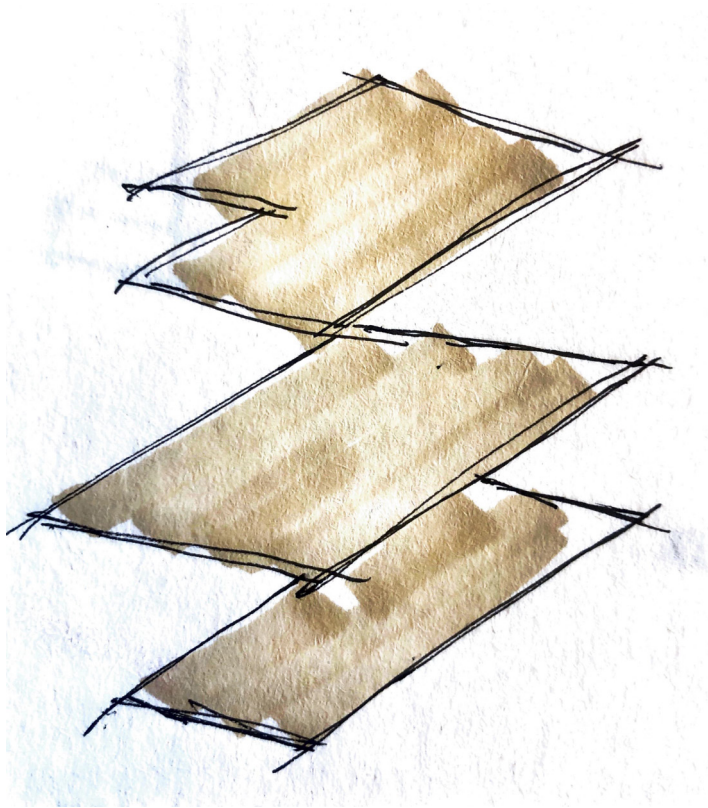
SPIRITUAL CARE

Friar in prayer by Vincenzo Abbati shows a monk in a moment of solitude seeking spiritual care through the act of praying outside a Christian spiritual place, the church building

A GUESTROOM

The possibility to host loved ones and invite other social connections to stay and take part of life in the community.



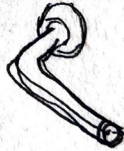
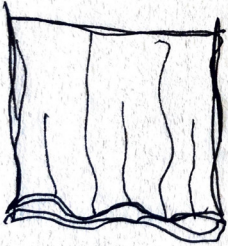
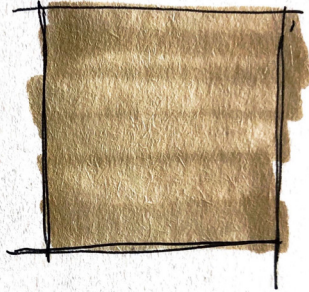
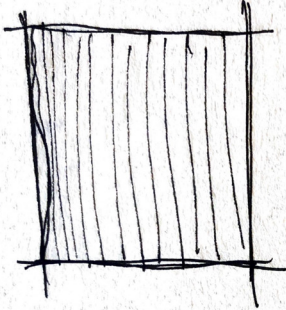


DIFFERENT SIZED UNITS

Different sizes of private units to accommodate different needs, make space for both singles and couples,

MATERIALS

Quality materials and appropriate application to prevent hurting the body when interaction with the domestic spaces and elements,

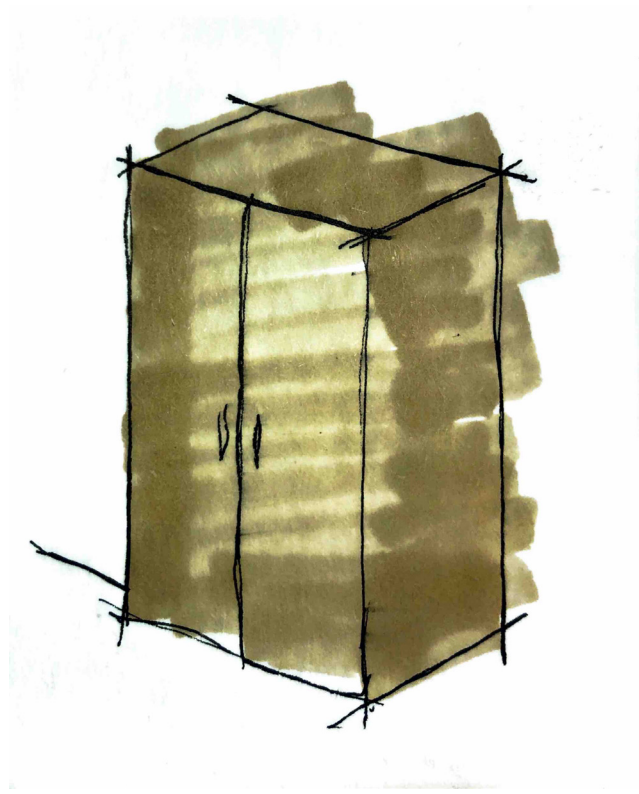


COMMUNAL CARE

Peasant Wedding by Pieter Bruegel the Elder, 1566-1569 displays a communal gathering of celebration where the with various members of the community coming together but in enjoyment and in service displaying the sharing and care of a community.





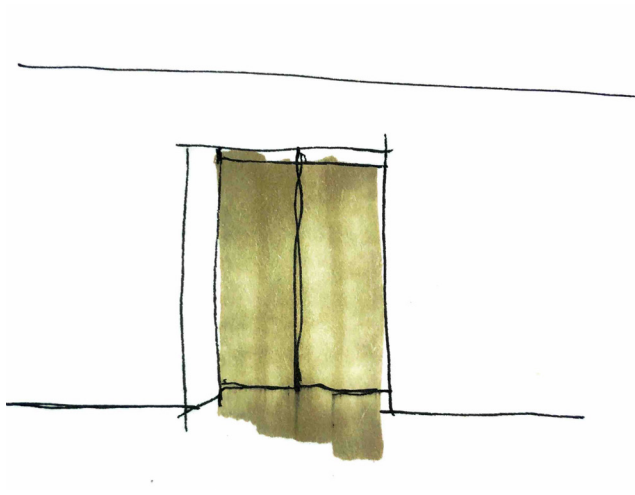


STORAGE

Space to store and keep belongings from a past life when moving into a smaller space.

A ELEVATOR

Access for different capacity and situations.







CARE FOR THE HOME

Sewing girl by Carl Larsson shows a girl in the a craft room of her home doing some sewing work. The well curated domestic environment and the act of craft maintenance conveys a act of care for the home environment being conducted.

