



**GJØL**

SITE SPECIFICATIONS

SITE SPECIFICATIONS  
CONTEXTUAL LANDSCAPE & SEASONS  
THE LOCAL BUILDING TYPOLOGI  
LOCAL INITIATIVES  
THE OYSTER FARMER - A REFERENCE



Studnet No: 150290  
Tutor: Scarlett Hessain  
MA Architecture Spatial Design  
Head of Programme: Peter Thule Kristensen  
KADK spring 2021



# SITE SPECIFICATIONS







NATIONAL ANTHEM OF GJØL (GÖL)

You spot that rises from the dangers of the Limfjord,  
a poet brings you his first prize,  
well, like Øland, you do not flaunt forests.  
:/: But still you are a little paradise. :/:

Convergence about this people swings,  
when in the furrow they lay the semen down.  
And when in the boat they swing on the inlet.  
:/: They work together well in agreement: /:

You little spot. I only know you briefly,  
but still I wish you by heart good luck.  
As I mention you among Danish relatives.  
:/: and fleetingly welcomes you. God's peace-father-  
well. :/:

/ unknown Author and year.  
Translated into english



M

a

p

G

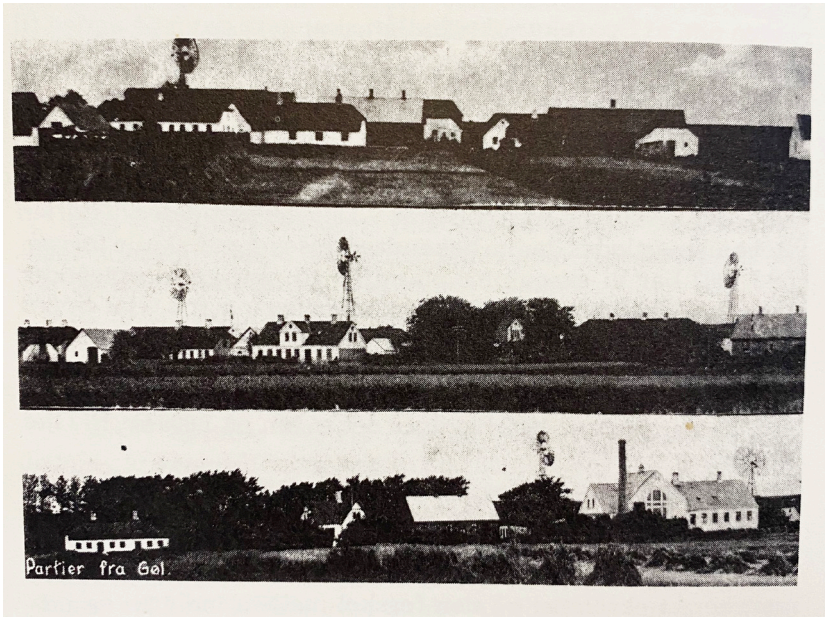
j

ø

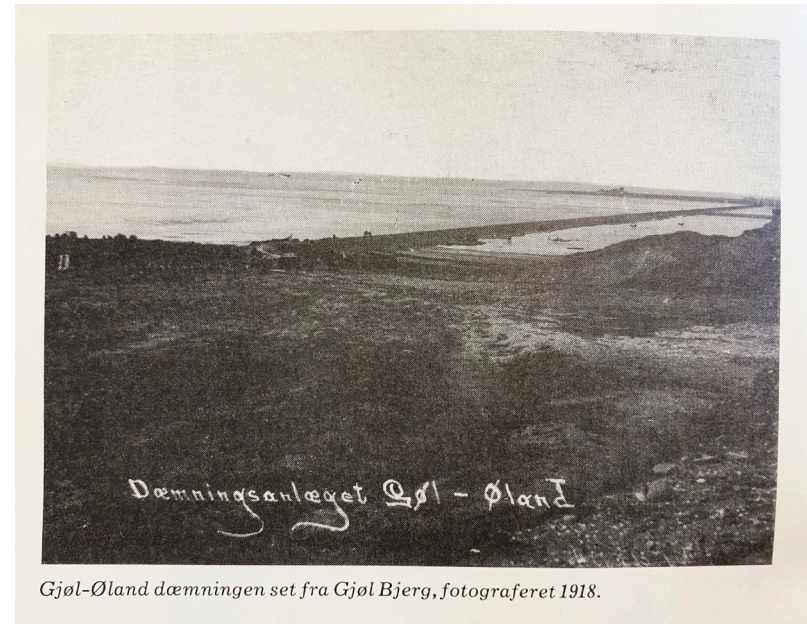
l







This old photo of Gjøl shows the building typology. This is still representative for the typology in the village. Older farmhouses dominating meeting newer houses in same scale.



The GjøI Dam is very essential for the area. Back in the days GjøI was an Island because of the low terrain in the area. After the dam and other initiatives to keep out the water, this ensures the area to be connected to the rest of Nordjylland.



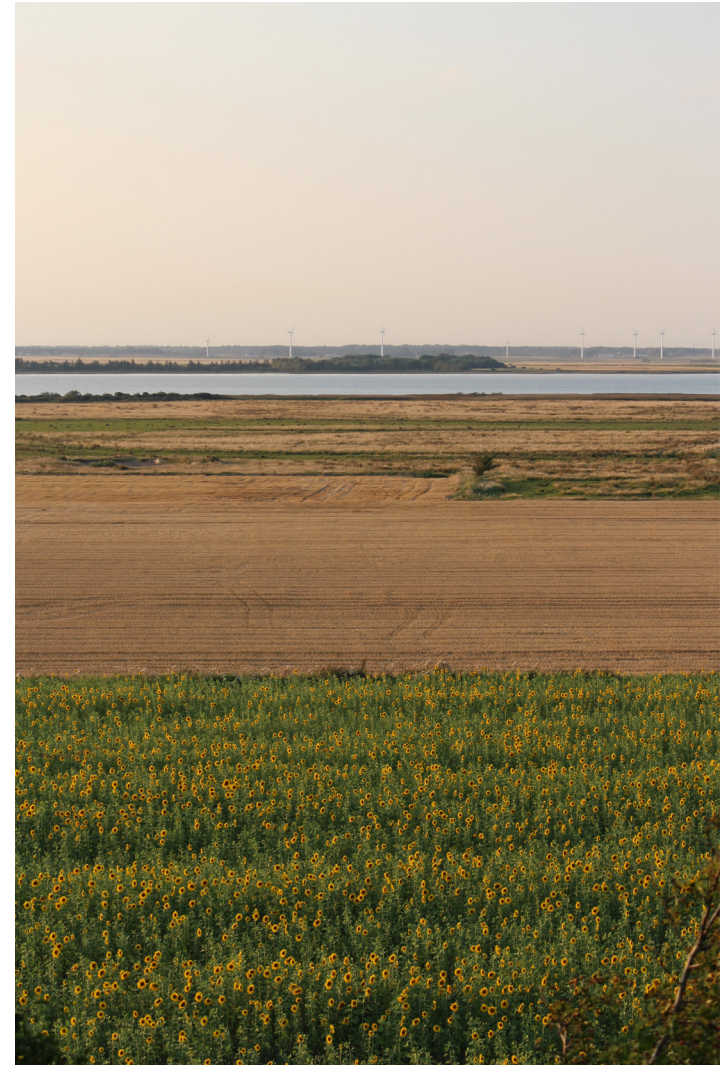
CONTEXTUAL  
LANDSCAPE  
& SEASONS



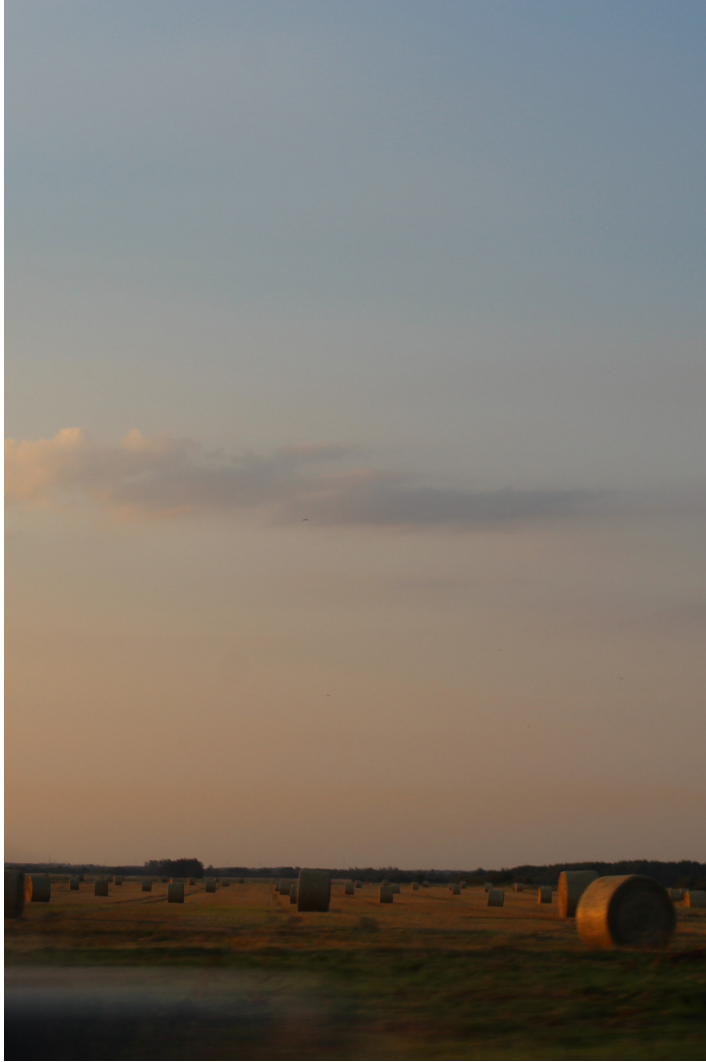




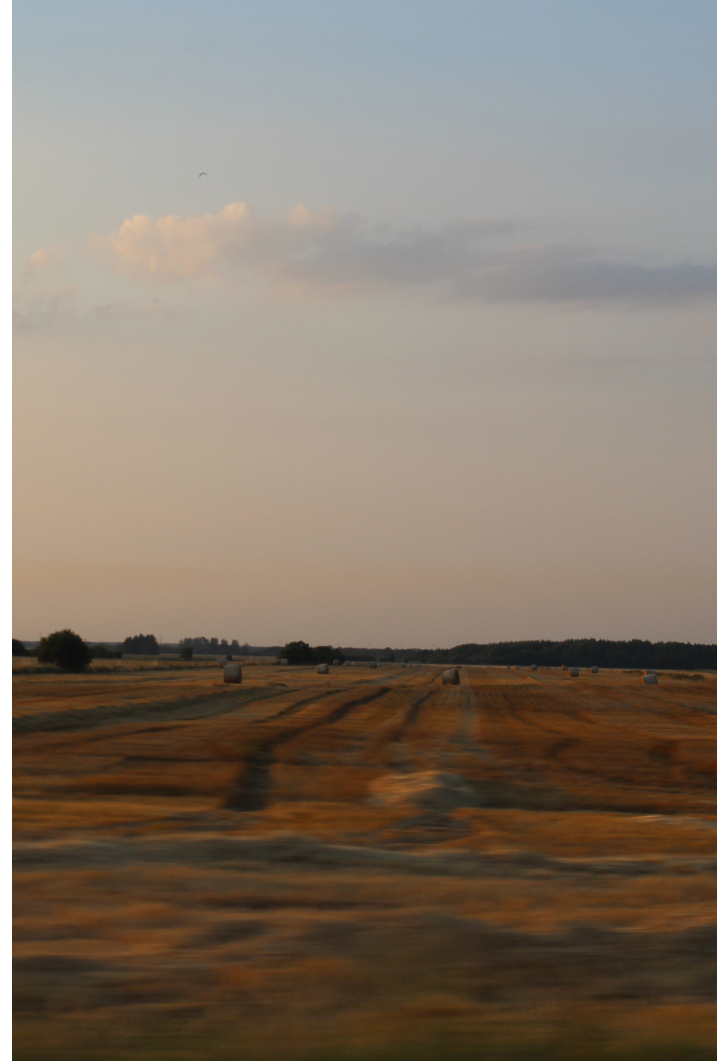
The three elements meeting each other. The Fields, The Forest and the Inlet.



Looking from above the different crops creates patterns in the landscape. The many layers of nature become visible.



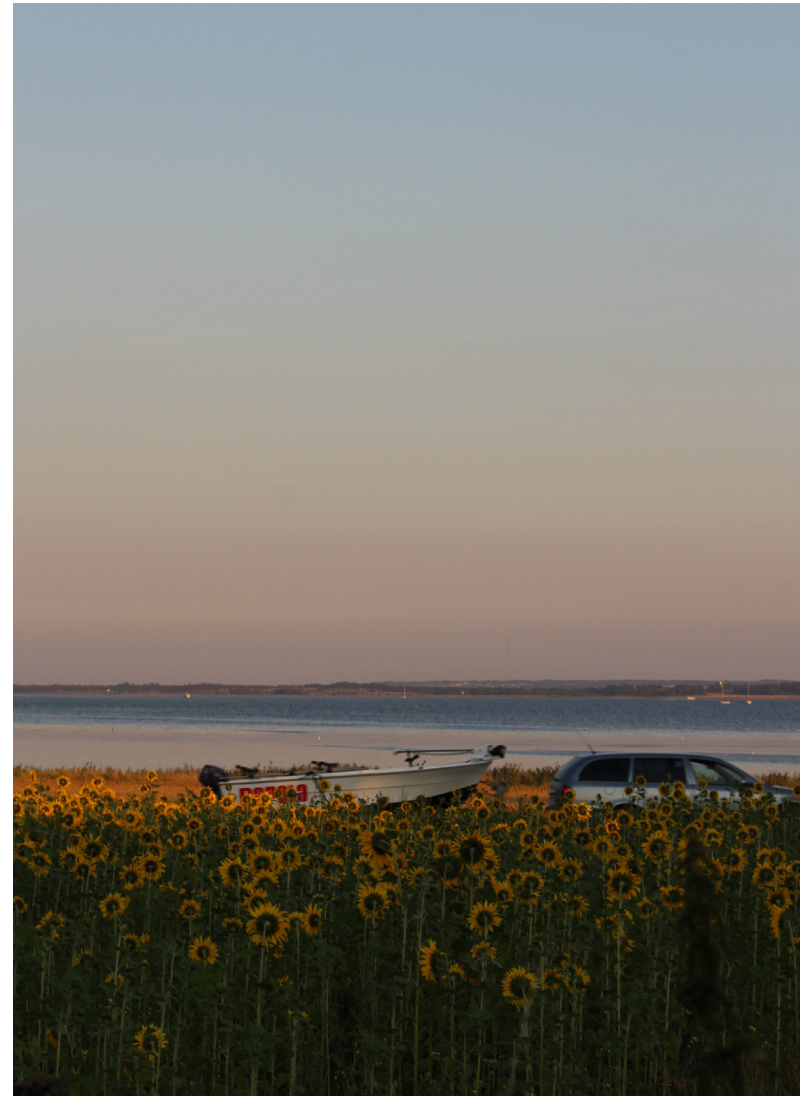
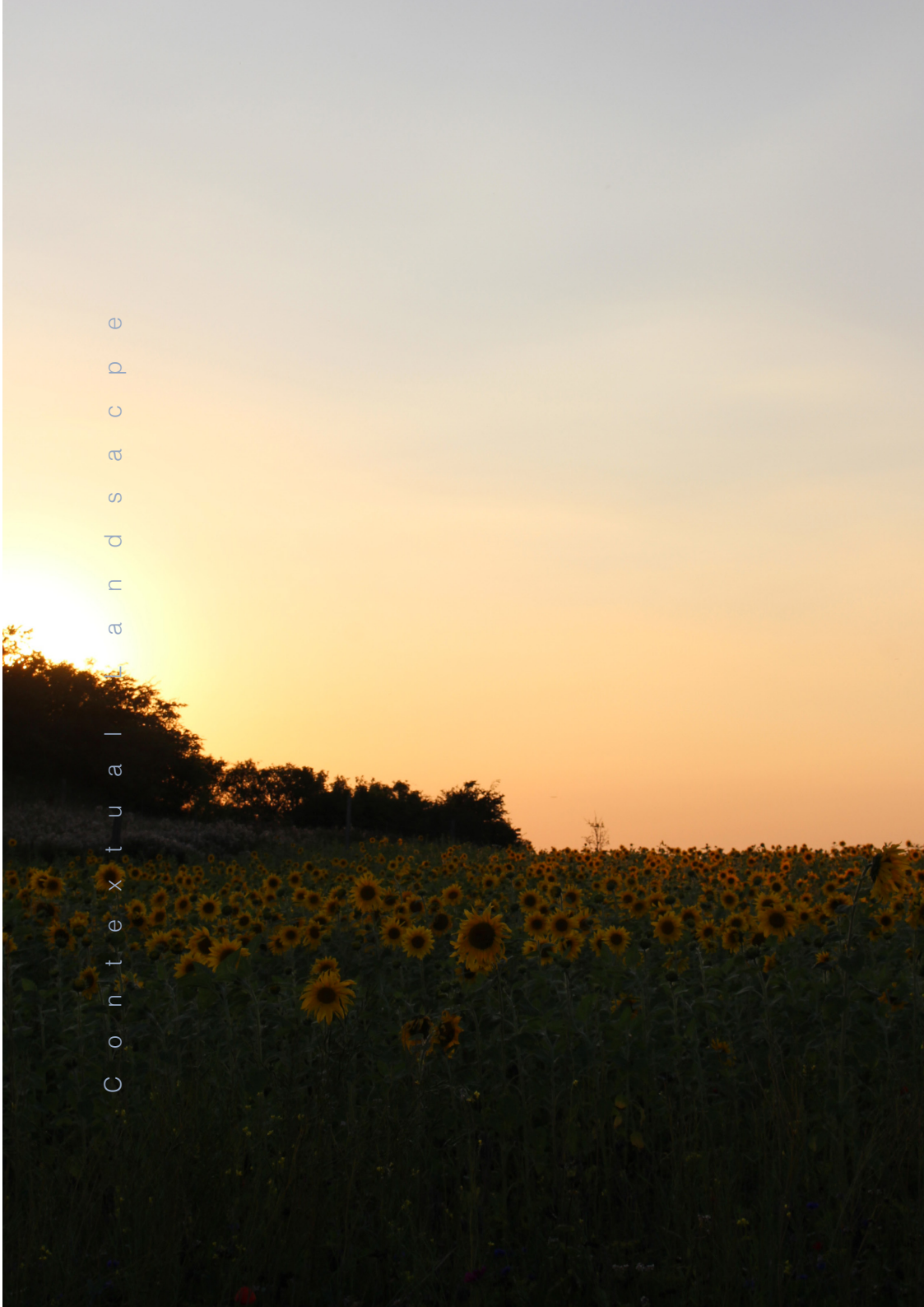
The many fields in the area is dominating the landscape and is ever changing over the seasons.



Early evening Field in August 2020.



C o n t e x t u a l i t y a n d s a c p e



S U M M E R 2 0 2 0

During summer the place really comes alive and a lot of water related activities appears in the area. Also the sunflower fields dominate the landscape and creates a very unique atmosphere.





C o n t e x t u a l L a n d s a c p e

202





The low-lying landscape is often very wet and has these bigger puddles in it, especially during winter season.



Small paths leads all the way from the forest area to the water edge.



C o n t e x t u a l L a n d s a c p e



w i n t e r 2 0 2 1



C o n t e x t u a l L a n d s c a p e



w i n t e r 2 0 2 1





The changing seasons really change the atmosphere and use of the area. During winter the area can be very empty and quiet but can also create very nature close experinces. On very cold winters the Inlet can freeze and gives the possibility of ice skating.



C o n t e x t u a l l a n d s a c p e

w i n t e r 2 0 2 1





o n t e x t u a l l a n d s a c c e p t e

w i n t e r 2 0 2 1

## A R R I V A L

THE ARRIVAL TO THE SITE FROM GJØL CITY CENTER IS THROUGH THE COTTAGE AREA SEEN HERE. SITE IS SITUATED AT THE END OF THE ROAD GOING RIGHT IN THIS PICTURE.





Right: The road leading to the site, through a smaller path between the trees.

Left: The view from the access road. Looking at the field with the Inlet in the background.







## THE LOCAL BUILDING TYPOLOGI

The building typology around the site is mostly dominated of a big cottage area with both newer and old summerhouses. Here is also found marks for hunting, fishing and building which is all related to the activities taking place in the area. The area also has a very active farming culture and the need for bigger industrial buildings to store the machines and equipment related to this.

On the picture here is shown an old “shed” for the fishermen to store their equipments for the fishing. Today it is still used for that for a local fisherman .







A hunting tower for overlooking the fields. More of these home-made wooden structures is found around the forest .



Summerhouses in all shapes is found here. Some are left unvisited for many years where patina has made its marks on the old wooden building.





The typical old farming house in relation to an industrial barn, overlooking the fields.



Summerhouses in all shapes is found here. Some are left unvisited for many years where patina has made its marks on the old wooden building.





Boats are pulled ashore for the winter.



A lot of the summerhouses has these sheds where the patina is really shown.





Old bricks in different tones, waiting to be reused.



Several old building materials stored and saved for new projects.





Industrial barn meeting the nature. the contrast of the metal facades up against the natural context.



Classic barn structure in a contemporary form. The large gates allowing trucks to go in and out of the building.



# LOCAL INITIATIVES

THE NEW FOOD MOVEMENT

Locals from the area is working actively on crating self-grown local produced products that they hope will help crate focus on quality sustainable food as well as put the town on the map for visitors.

on of the closets neighborhood to the site for the Oysterfarm is the local beekeeper who over the past years has created a beehive who experiment with a variable range of honey products as well as growing wine for a honeywine. The Oysterfarm is to take part of this area's aim to crate a community of focus on these local farmers reinventing the areas food focus.







B E E K E E P E R

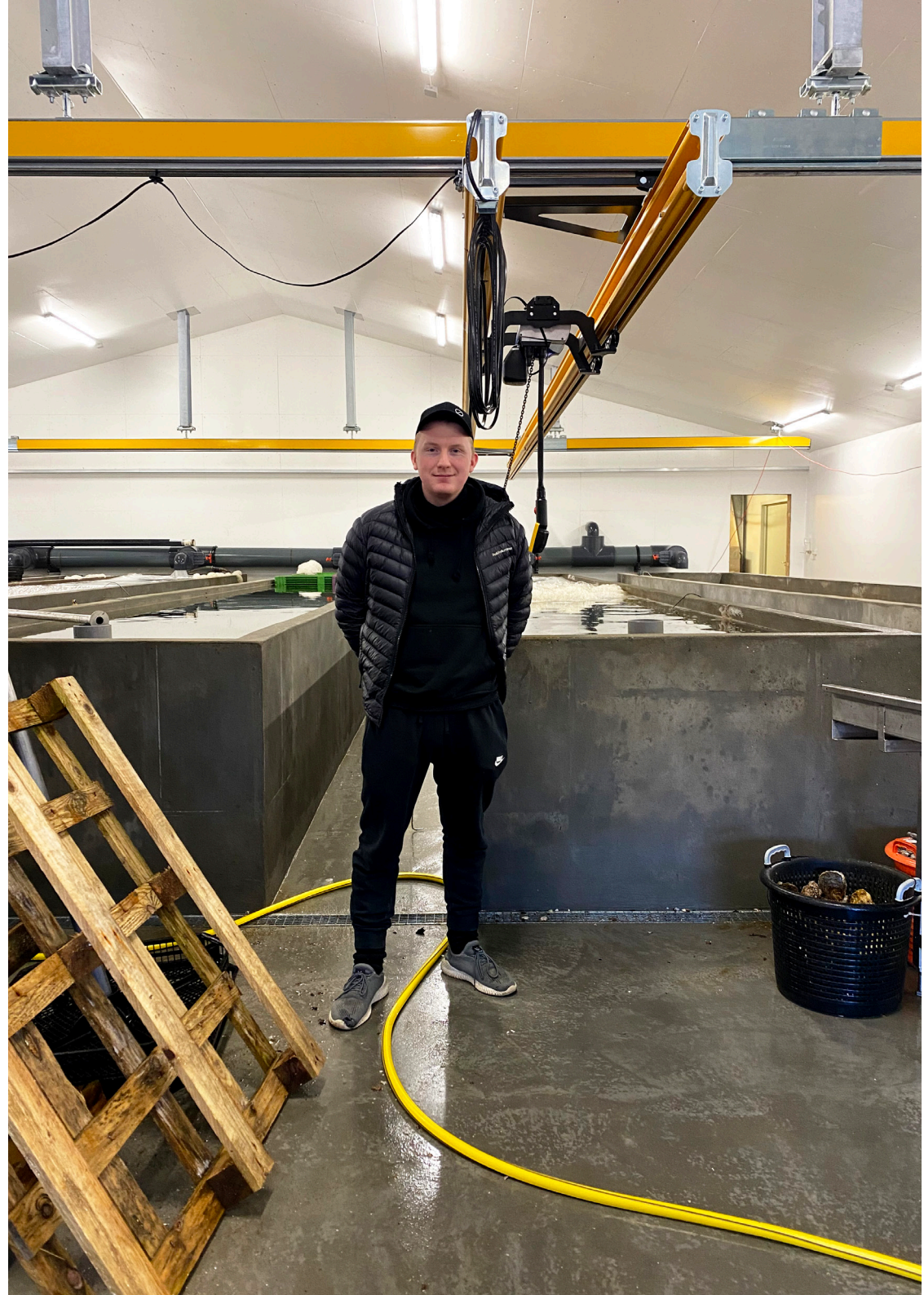
The local beekeeper has provided the area with a load of flowerfields dominated by sunflowers creating a special environment throughout especially the summer season.



# THE OYSTER FARMER

## A REFERENCE

Venø Fish Farm, located on Venø further south in Limfjorden, is a successful oyster- and shellfish farm started by Christian seen on the picture. They have succeeded in renewing the idea of what it means to work with oysters and now provide many of the best restaurants in Denmark with the famous Limfjordsoyster as well as the European Oyster. He has recently designed and built a newer addition to the farm to update the process. Following pages show a range of photos of the facilities of the Oyster Farm.





S h e l l f i s h b a s i n



Old part of the farm, showing basins for shellfish and small fish



O y s t e r b a s i n

New facilities showing the basin for the oysters to be put in for cleaning over some weeks



The new basins made espeicailly for oysters are build to fit the plastic trays in which in the oysters are placed for cleaning. For the cleaning process is created a water system ensuring a cirkulation of the water.



The Limfjordsøyster placed in the trays . A smaller crane system is connected to move the heavy trays into the basin.



C l e a n i n g



Before the oysters are placed in the water, they are sorted and roughly cleaned.



F a r m h o u s e

Venø Fish Farm from the outside. The farm is placed in a forest area on the small island Venø in the south of Limfjorden.

P a c k i n g



Before the oysters are placed in the water, they are sorted and roughly cleaned.



O u t d o o r

New facilities showing the basin for the oysters to be put in for cleaning over some weeks